

186. Packard, 1932-1937

Pelican
Brass, chrome-plated. The wings are vertical, 1 1/2-inch (3.8 cm) spacing at wing tips. Ninth through Fifteenth series.

187. Packard, 1932-1937

Pelican
Brass, chrome-plated. Special pelican supplied through accessory house. Not an approved Packard accessory but not attributed to any other car. Ninth through Fifteenth series.

188. Packard, 1933

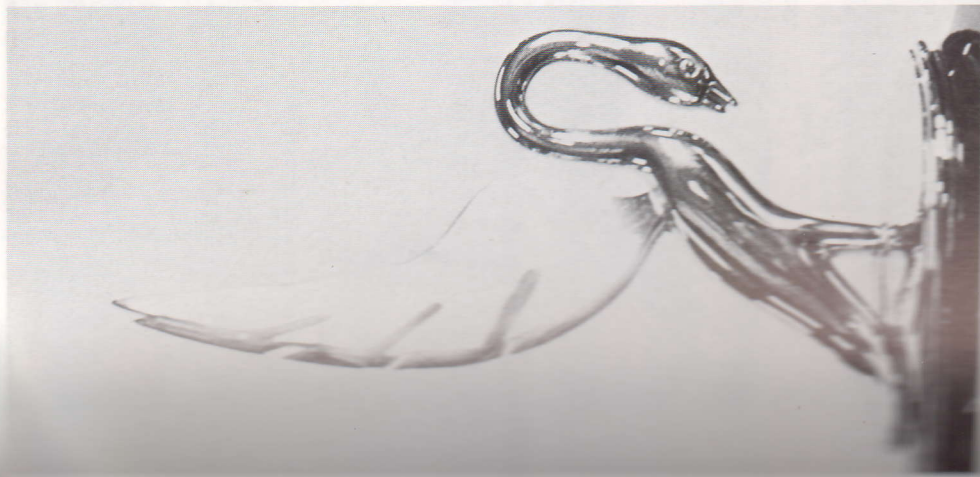
Running dog
Brass, chrome-plated. Special mascot, patented in 1929 and used by Ed. Macauley on his Tenth series (1933) speedster.

189. Packard, 1936-1937

Deluxe Emblem—Goddess of Speed
Zinc die cast, chrome-plated. Used for models 110 and 120. Des. pat. 97526, filed May 27, 1935; serial number 57040, issued June 1, 1937. The designer was Werner H. A. Gubltitz; it was assigned to Packard Motor Car Co. Fourteenth and Fifteenth series.

190. Packard, late 1937

Deluxe Emblem—Goddess of Speed
Zinc die cast, chrome-plated. Des. pat. 104774, filed March 13, 1937; serial number 68161, issued June 1, 1937. Designed by Werner H. A. Gubltitz. Fifteenth series, Super 8 only.



194.

191. Packard, 1937-1938

Deluxe Emblem—Goddess of Speed
Zinc die cast, chrome-plated. Des. pat. 104774; serial number 68161. Fifteenth and Sixteenth series.

192. Packard, 1938

Pelican radio aerial
Brass, chrome-plated. Des. pat. 107,420.

193. Packard, 1938

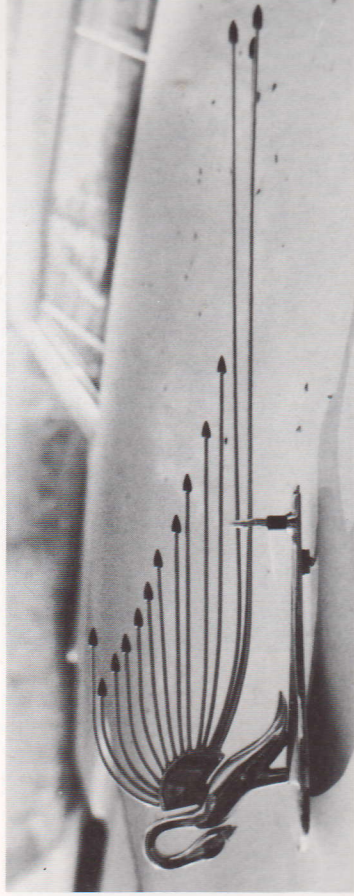
Arrow
Brass, chrome-plated. Prototype designed for 1938 Packards by Vergil Greene. Presented to Packard but not adopted.

194. Packard, 1938-1940

Pelican
Zinc die cast, chrome-plated. Wings are spaced one inch (2.5 cm) apart at top.



191.



192.

193.

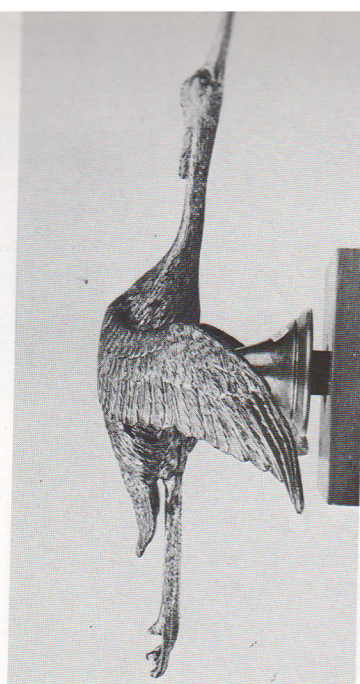
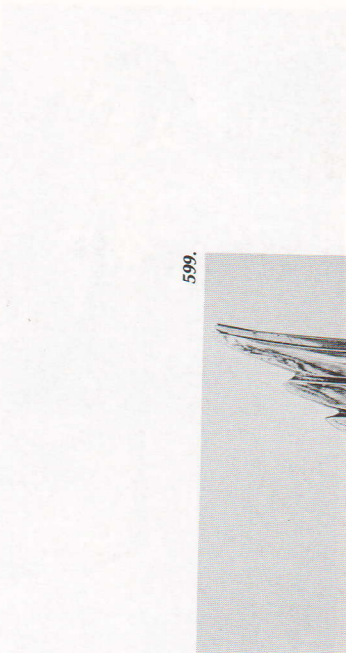




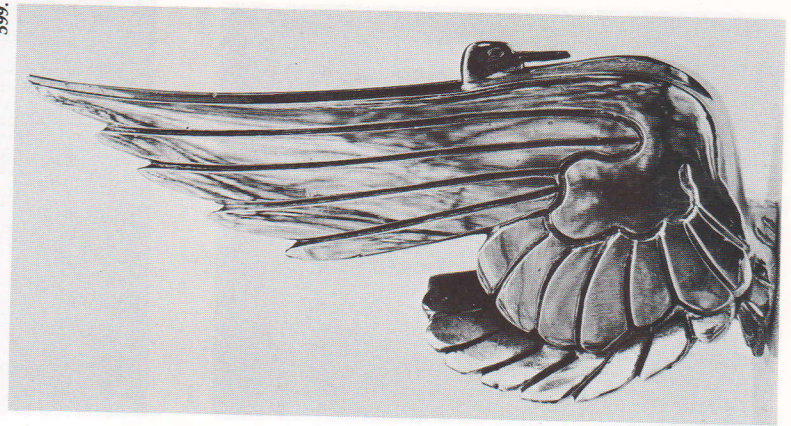
596.



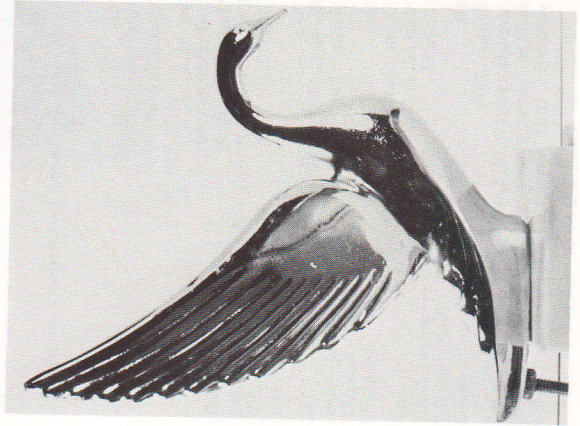
597.



598.



599.



600.



601.



605.



602.

596.
Bald eagle, 1930's
Zinc, nickel-plated. (American)

597.
Quail, 1930's
Bronze, silver-plated. (British)

598.
Stork (flying—wings down), 1930's
Bronze, silver-plated. (British)

599.
Dindon (turkey), 1930's
Marked: F. Bazin
Sometimes unmarked, two sizes. (French)

600.
Swan, 1940's—1970's
Zinc, various platings. Among the most popular of inexpensive mascots patterned after the post-war Packard mascot. Comes in chrome- or gold-plating; some have colored plastic wings. (American)

601.
Muggenscherm, circa 1950
Designed to deflect bugs from the windshield. (German)

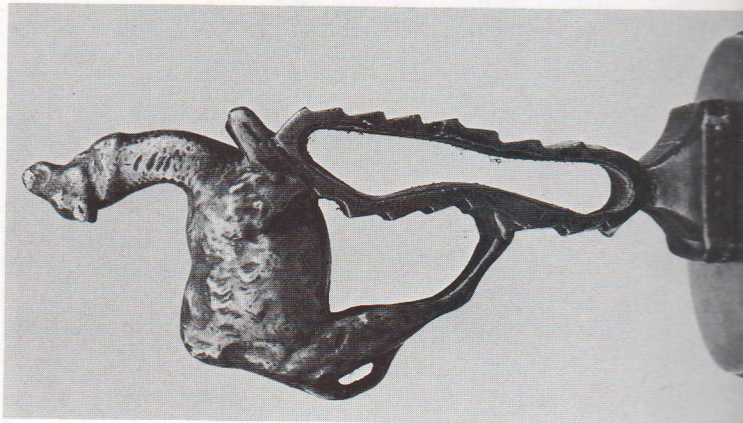
602.
Bull, 1920's
Marked: Frécourt
(French)

603.
Butterfly, 1920's
Brass, nickel-plated and painted. Temperature indicator—as car heats, its top rises; if water boils, it whistles. (American)

604.
Dromedary on track, 1925
used following the Croisière Noire (the crossing of Africa by car).

605.
Comic cat, 1920's
Marked: Rd. No. 676201
Brass. (British)

604.



603.

