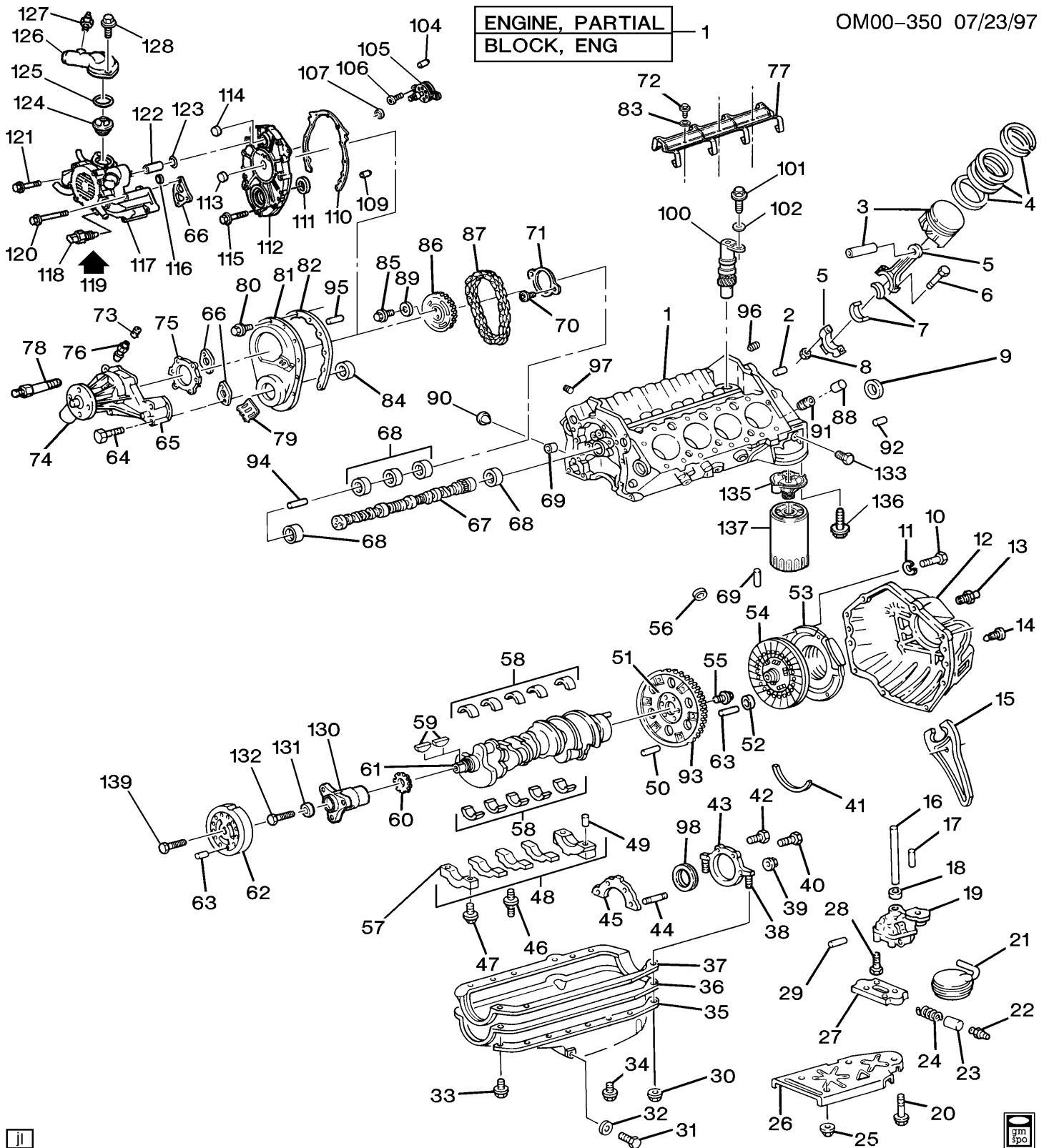




5.7L V8 OEM PARTS LIST

ILLUSTRATION INDEX

TITLE	PAGE
I ENGINE ASM - 5.7L V8 PART 1 (350 CID/5.7L), 2002-2004 I ENGINE ASM - 5.7L V8 PART 1 350 CID/5.7L(5.7D)	0-215
I ENGINE ASM - 5.7L V8 PART 2 (350 CID/5.7L), 2002-2004 I ENGINE ASM - 5.7L V8 PART 2 350 CID/5.7L(5.7D)	0-245



1991-2001 I ENGINE ASM-5.7L V8 PART 1 350 CID/5.7L, 2002-2004 I ENGINE ASM-5.7L V8 PART 1 350 CID/5.7L(5.7D)

1.	0.033	ENGINE,(SERV PARTIAL)(*1,2,3,4,7,8,9)	91 - 93	I (L05)	1	10104432
	0.033	ENGINE,(SERV PARTIAL)(*1,2,3,4,7,8,9)(0.030)	91 - 93	I (L05)	1	10104433

	0.033	ENGINE,(SERV PARTIAL)(* 1,2,3,5,12,15,19,20,22,23,24,25,26,28,29,30,31,32,34)	94 - 95	I (L05)	1	10104432
	0.033	ENGINE,(SERV PARTIAL)(*14,19,20,22,24,35,39,40.)	96	I (L05)	1	10104432
	0.033	ENGINE,(SERV PARTIAL)(*14,22,34,41)	98 - 99	I (L31)	1	12556121
	0.033	ENGINE,(SERV PARTIAL)(*27)	96 - 97	I (L05)	1	12509229
	0.033	ENGINE,(SERV PARTIAL)(*34,37,38)	96 - 97	I (L31)	1	12556121
	0.033	ENGINE,(SERV PARTIAL)(*34,41,42,43)	00	I (L31)	1	12556121
	0.033	ENGINE,(SERV PARTIAL)(*41,42,43,44)	01	I (L31)	1	12556121
	0.033	ENGINE,(SERV PARTIAL)(*41,43,44)	02	I (LG9)	1	12556121
	0.033	ENGINE,(SERV PARTIAL)(*43,44,46,48,49)	03 - 04	I (LG9)	1	12556121
	0.033	ENGINE,(SERV PARTIAL)(* 5,6,10,11,12,13,14,15,16,17,18,19,20,21,22,23,24,25,2 6)	91 - 93	I (L05)	1	10054586
	DISCONN	ENGINE,(SERV PARTIAL)(* 5,6,10,11,12,13,14,15,16,17,18,19,20,21,22,23,24,25,2 6)	91 - 93	I (L05)	1	10054587
	0.033	ENGINE,(SERV PARTIAL)(27,33)	94 - 95	I (L05)	1	12509229
	0.033	BLOCK,ENG(W/PSTNS)	00 - 04			
	0.033	BLOCK,ENG(W/PSTNS)(*17,21)	96	I (L05)	1	12521318
	0.033	BLOCK,ENG(W/PSTNS)(*7,21,35,36)	94 - 95	I (L05)	1	12521318
2.	1.531	PLUG,ENG BLK OIL GAL(HEX SOC,1/4-18 THD,.69 LEN,1038,PC,DOG PT)(W/SEALANT)(8.971)	91 - 96	I (L05)	AR	12338136
	1.531	PLUG,ENG BLK OIL GAL(HEX SOC,1/4-18 THD,.69 LEN,1038,PC,DOG PT)(W/SEALANT)(8.971)	97 - 01	I (L31)	AR	12338136
	1.531	PLUG,ENG BLK OIL GAL(HEX SOC,1/4-18 THD,.69 LEN,1038,PC,DOG PT)(W/SEALANT)(* 41,43,44,46,48,49)(8.971)	02	I (LG9)	AR	12338136
	1.531	PLUG,ENG BLK OIL GAL(HEX SOC,1/4-18 THD,.69 LEN,1038,PC,DOG PT)(W/SEALANT)(* 41,43,44,46,48,49)(8.971)	03	I (LG9)	AR	12338136
	1.531	PLUG,ENG BLK OIL GAL(HEX SOC,1/4-18 THD,.69 LEN,1038,PC,DOG PT)(W/SEALANT)(* 41,43,44,46,48,49)(8.971)	04	I (LG9)	AR	12338136
3.	0.629	PISTON,(W/PIN)(.030 O.S.)(*17,21,35)	94	I (L05)	8	10181392
	0.629	PISTON,(W/PIN)(.030 O.S.)(*27,33)	94 - 97	I (L05)	8	10159438
	0.629	PISTON,(W/PIN)(.030 O.S.)(INCL *36)	95	I (L05)	8	10181392
	0.629	PISTON,(W/PIN)(.030 O.S.)(INCL *8)	92	I (L05)	8	10049090
	0.629	PISTON,(W/PIN)(*14,22,34,41,42,43)(.127MM O.S.)	98 - 00	I (L31)	8	88894281
	0.629	PISTON,(W/PIN)(*22,34,41,42,43)(.025MM O.S.)	98 - 00	I (L31)	8	12369543
	0.629	PISTON,(W/PIN)(*34,37,41)(.127MM O.S.)	97	I (L31)	8	88894281
	0.629	PISTON,(W/PIN)(*41,43,44,46,48,49)(.127MM O.S.)	02 - 04	I (LG9)	8	88894281
	0.629	PISTON,(W/PIN)(HI LIMIT)(*17,21,35)	94	I (L05)	8	10181390

	0.629	PISTON,(W/PIN)(HI LIMIT)(*7,9,17,21)	91 - 93	I (L05)	8	10181390
	0.629	PISTON,(W/PIN)(HI LIMIT)(INCL *36)	95	I (L05)	8	10181390
	0.629	PISTON,(W/PIN)(HI-LIMIT)(*27,33)(101.632-101.614MM) (O.S.)	94 - 97	I (L05)	8	10159437
	DISCONN	PISTON,(W/PIN)(HI-LIMIT)(INCL *8)	92	I (L05)	8	10049089
	0.629	PISTON,(W/PIN)(STD)(*17,21,35)	94	I (L05)	8	10181389
	0.629	PISTON,(W/PIN)(STD)(*27,33)(101.614-101.596MM) (STD)	94 - 97	I (L05)	8	10159436
	0.629	PISTON,(W/PIN)(STD)(*7,9,17,21)	91 - 93	I (L05)	8	10181389
	0.629	PISTON,(W/PIN)(STD)(INCL *36)	95	I (L05)	8	10181389
	0.629	PISTON,(W/PIN)(STD)(INCL *8)	92	I (L05)	8	10049088
	0.629	PISTON KIT,ENG(* 1,2,3,4,5,6,8,10,11,12,13,14,15,16,18,19,20,22,23,24,25 ,26)(INCLS PIN & RINGS)(STD)	91 - 93	I (L05)	8	12514101
	0.629	PISTON KIT,ENG(* 1,2,3,4,5,6,8,10,11,12,13,14,15,16,17,19,20,22,23,24,25 ,26)(HI LIMIT)(W/PIN & RINGS)	91 - 93	I (L05)	8	12514102
	0.629	PISTON KIT,ENG(* 1,2,3,4,5,6,8,10,11,12,13,14,15,16,17,19,20,22,23,24,25 ,26)(.030 O.S.)(W/PIN & RINGS)	91 - 93	I (L05)	8	12514103
	0.629	PISTON KIT,ENG(* 1,2,3,5,12,14,15,19,20,22,23,24,25,26,28,29,30,32,34) (INCLS PIN & RINGS)(STD)	94 - 95	I (L05)	8	12514101
	0.629	PISTON KIT,ENG(* 1,2,3,5,12,14,15,19,20,22,23,24,25,26,28,29,30,32,33,3 4)(HI LIMIT)(W/PIN & RINGS)	94 - 95	I (L05)	8	12514102
	0.629	PISTON KIT,ENG(* 1,2,3,5,12,15,17,19,22,23,24,25,26,28,29,30,31,32.) (.030 O.S.)(W/PIN & RINGS)	94	I (L05)	8	12514103
	0.629	PISTON KIT,ENG(*14,19,20,22,23,24,35,39,40.)(INCLS PIN & RINGS)(STD)	96 - 97	I (L05)	8	12514101
	0.629	PISTON KIT,ENG(*14,19,20,22,23,24,35,39,40.)(HI LIMIT)(W/PIN & RINGS)	96 - 97	I (L05)	8	12514102
	0.629	PISTON KIT,ENG(*14,19,20,22,23,24,35,39,40.)(.030 O.S.)(W/PIN & RINGS)	96 - 97	I (L05)	8	12514103
	0.629	PISTON KIT,ENG(*22,34,41,42,43)(0.50 MM O.S.)	98 - 01	I (L31)	8	12524224
	0.629	PISTON KIT,ENG(*22,34,41,42,43)(STD)	98 - 01	I (L31)	8	88894280
	0.629	PISTON KIT,ENG(*34,37,38,41)(0.50 MM O.S.)	96 - 97	I (L31)	8	12524224
	0.629	PISTON KIT,ENG(*34,37,38,41)(STD)	96 - 97	I (L31)	8	88894280
	0.629	PISTON KIT,ENG(*41,43,44,46,48,49)(STD)	02 - 04	I (LG9)	8	88894280
	0.629	PISTON KIT,ENG(*41,43,44,46,48,49)(.50MM O.S.)	02 - 04	I (LG9)	8	88894282
4.	0.643	RING KIT,PSTN(.030 O.S.)	91 - 95	I (L05)	4	14089026
	0.643	RING KIT,PSTN(*	94 - 95	I (L05)	8	14089026

	1,2,3,5,12,14,15,17,19,20,21,22,23,24,25,26,28,29,30,3 1,32,34,35)(.030 O.S.)			
	0.643 RING KIT,PSTN(* 1,2,3,5,12,14,15,17,19,20,21,22,23,24,25,26,28,29,30,3 1,32,34,35)(STD)	94 - 95	I (L05)	8 88894219
	0.643 RING KIT,PSTN(* 1,2,3,5,12,15,17,19,20,21,22,23,24,25,26,28,29,30,31,3 2)(STD)	91 - 93	I (L05)	8 88894219
	0.643 RING KIT,PSTN(*14,17,19,20,21,22,23,24,35,38,39,40.) (.030 O.S.)	96	I (L05,L31)	8 14089026
	0.643 RING KIT,PSTN(*14,17,19,20,21,22,23,24,35,40.)(STD)	96	I (L05,L31)	8 88894219
	0.643 RING KIT,PSTN(*14,22,34,41,42)(STD)	98 - 01	I (L31)	8 12522848
	0.643 RING KIT,PSTN(*14,22,34,41,42,43)(.127 MM O.S.)	98 - 00	I (L31)	8 12533559
	0.643 RING KIT,PSTN(*17,21)(.030 O.S.)	97	I (L05)	8 14089026
	0.643 RING KIT,PSTN(*17,21)(STD)	97	I (L05)	8 88894219
	0.643 RING KIT,PSTN(*22,34,41,42,43)(0.50 MM O.S.)	98 - 01	I (L31)	8 12524205
	0.643 RING KIT,PSTN(*27)(STD)	96 - 97	I (L05)	8 12528817
	0.643 RING KIT,PSTN(*27)(.005" O.S.)	96 - 97	I (L05)	8 12528818
	0.643 RING KIT,PSTN(*27,33)(.005" O.S.)	94 - 95	I (L05)	8 12528818
	0.643 RING KIT,PSTN(*27,33)	94 - 97	I (L05)	8 12528819
	0.643 RING KIT,PSTN(*28,31,32)(.030 O.S.)	96	I (L31)	6 12507986
	0.643 RING KIT,PSTN(*34,37,38,41)(STD)	96 - 97	I (L31)	6 12522848
	0.643 RING KIT,PSTN(*34,37,38,41.)(0.50 MM O.S.)	96 - 97	I (L31)	8 12524205
	0.643 RING KIT,PSTN(*34,37,41)(.127 MM O.S.)	97	I (L31)	8 12533559
	0.643 RING KIT,PSTN(*41,43,44,46,48,49)(STD)	02 - 04	I (LG9)	8 12522848
	0.643 RING KIT,PSTN(*41,43,44,46,48,49)(0.50 MM O.S.)	02 - 04	I (LG9)	8 12524205
5.	0.603 ROD,CONN	96 - 97	I (L05,L31)	8 10108688
	0.603 ROD,CONN	98 - 01	I (L31)	8 10108688
	0.603 ROD,CONN((INCL 6,8)* 1,2,3,4,5,6,10,11,12,14,15,16,18,19,20,22,23,24,25,26)	91 - 93	I (L05)	8 10108688
	0.603 ROD,CONN((INCL 6,8)*17)	91 - 92	I (L05)	8 10108688
	0.603 ROD,CONN((INCL 6,8)*7,8,9)	91 - 93	I (L05)	8 10108688
	0.603 ROD,CONN(* 1,2,3,5,12,14,15,19,20,22,23,24,25,26,28,29,30,32,34)	94 - 95	I (L05)	8 10108688
	0.603 ROD,CONN(*17)	93	I (L05)	8 10108688
	0.603 ROD,CONN(*17,21,27,31,33,35)	94	I (L05)	8 10108688
	0.603 ROD,CONN(*21)	92 - 93	I (L05)	8 10108688
	0.603 ROD,CONN(*27,33,36)	95	I (L05)	8 10108688
	0.603 ROD,CONN(*41,42,44,46,48,49)	02 - 04	I (LG9)	8 10108688
	0.603 ROD,CONN(*7,8,9)	91 - 93	I (L05)	8 10108688
6.	0.623 BOLT,CONN ROD(PART OF 5)	91 - 97	I (L05,L31)	16 00461372
	0.623 BOLT,CONN ROD(PART OF 5)	98 - 01	I (L31)	16 00461372

	0.623	BOLT,CONN ROD(PART OF 5)	02 - 04	I (LG9)	16	00461372
7.	0.616	BEARING KIT,CONN ROD(STD)	91 - 97	I (L05,L31)	8	12523924
	0.616	BEARING KIT,CONN ROD(STD)	98 - 99	I (L31)	8	12523924
	0.616	BEARING KIT,CONN ROD(*34,41,42,43)(STD)	01	I (L31)	8	12523924
	0.616	BEARING KIT,CONN ROD(*34,41,43)(STD)	02 - 03	I (LG9)	8	12523924
	0.616	BEARING KIT,CONN ROD(*43,44,46,48)(STD)	04	I (LG9)	8	12523924
8.	0.626	NUT,CONN ROD(3/8-24)(HEX)	91 - 97	I (L05)	16	03866766
	0.626	NUT,CONN ROD(*41,43,44,46,48,49)(NOTE:MUST BE SPECIFIED TORQUE)(3/8-24)(HEX)	02 - 04	I (LG9)	16	03866766
	0.626	NUT,CONN ROD(NOTE:MUST BE SPECIFIED TORQUE)(3/8-24)(HEX)	98 - 01	I (L31)	16	03866766
9.	0.553	PLUG,CM/SHF RR BRG HOLE(8.970)	91 - 95	I (L05)	1	10241154
	0.553	PLUG,CM/SHF RR BRG HOLE(8.970)	96 - 97	I (L05,L31)	1	10241154
	0.553	PLUG,CM/SHF RR BRG HOLE(8.970)	98 - 01	I (L31)	1	10241154
	0.553	PLUG,CM/SHF RR BRG HOLE(*41,43,44,46,48,49)(8.970)	02 - 04	I (LG9)	1	10241154
10.	0.862	BOLT,CLU PRESS PLT	02 - 04			
	0.862	BOLT,CLU PRESS PLT(*14)(3/8-16X1)	94 - 97	I (L05)	6	00838653
	0.862	BOLT,CLU PRESS PLT(*14,21)(3/8-16X1)	91 - 93	I (L05)	6	00838653
	0.862	BOLT,CLU PRESS PLT(*42)(3/8-16X1)	98 - 99	I (L31)	6	00838653
	0.862	BOLT,CLU PRESS PLT(*42,43)(3/8-16X1)	00 - 01	I (L31)	6	00838653
11.	0.862	WASHER,CLU PRESS PLT	02 - 04			
	0.862	WASHER,CLU PRESS PLT(*14)(29/64 X 49/64 X 7/64)(HEL SPR LK)(8.931)	94 - 96	I (L05)	6	09439513
	0.862	WASHER,CLU PRESS PLT(*14)(#10X18.30)(LK)(8.931)	97	I (L05)	AR	11500046
	0.862	WASHER,CLU PRESS PLT(*14,21)(29/64 X 49/64 X 7/64)(HEL SPR LK)(8.931)	91 - 93	I (L05)	6	09439513
	0.862	WASHER,CLU PRESS PLT(*42)(#10X18.30)(LK)(8.931)	98 - 00	I (L31)	AR	11500046
12.	0.683	HOUSING,FLYWHL	00 - 04			
	0.683	HOUSING,FLYWHL(*9,14)	91 - 93	I (L05)	1	15530202
13.	0.796	STUD,CLU FORK BALL	00 - 04			
	0.796	STUD,CLU FORK BALL(*14)	91 - 93	I (L05)	1	15592268
14.	0.799	FITTING,CLU FORK BALL STUD LUB	00 - 04			
	0.799	FITTING,CLU FORK BALL STUD LUB(*14)(1/4-28 CZ)(8.984)	91 - 93	I (L05)	AR	09417901
15.	0.795	FORK,CLU	00 - 04			
	0.795	FORK,CLU(*14)	91 - 93	I (L05)	1	15592270
16.	1.639	SHAFT,O/PMP DRV	91 - 97	I (L05,L31)	1	03998287
	1.639	SHAFT,O/PMP DRV	98 - 01	I (L31)	1	03998287
	1.639	SHAFT,O/PMP DRV(*41,43,44,46,48,49)	02 - 04	I (LG9)	1	03998287
17.	0.206	PIN,O/PMP LOC(1/4X5/8)(0.738)	91 - 97	I (L05,L31)	AR	12554553

	0.206	PIN,O/PMP LOC(1/4X5/8)(0.738)	98 - 01	I (L31)	1	12554553
	0.206	PIN,O/PMP LOC(*41,43,44,46,48,49)(1/4X5/8)(0.738)	02 - 04	I (LG9)	1	12554553
18.	1.639	RETAINER,O/PMP DRV SHF	91 - 97	I (L05,L31)	1	03764554
	1.639	RETAINER,O/PMP DRV SHF	98 - 01	I (L31)	1	03764554
	1.639	RETAINER,O/PMP DRV SHF(*41,43,44,46,48,49)	02 - 04	I (LG9)	1	03764554
19.	1.652	PUMP,OIL(.742 DIA. TUBE)(INCLS BOLTS,COVERS,GEARS,HSG,PIN,PLUG,SHF,SPR,VLV)	94 - 97	I (L05,L31)	1	12555283
	1.652	PUMP,OIL(.742 DIA. TUBE)(INCLS BOLTS,COVERS,GEARS,HSG,PIN,PLUG,SHF,SPR,VLV)	98 - 01	I (L31)	1	12555283
	1.652	PUMP,OIL(* 1,2,3,5,12,15,17,19,20,21,22,23,24,25,26,27,28,29,30,3 1,32,33)	94	I (L05)	1	12555284
	1.652	PUMP,OIL(*22,23,24,27,28,29)	91 - 92	I (L05)	1	12555284
	1.652	PUMP,OIL(*22,23,24,27,28,29)(INCLS BOLTS,COVERS,GEARS,HSG,PIN,PLUG,SHF,SPR,VLV)	93	I (L05)	1	12555283
	1.652	PUMP,OIL(*41,43,44,46,48,49)(.742 DIA. TUBE)(INCLS BOLTS,COVERS,GEARS,HSG,PIN,PLUG,SHF,SPR,VLV)	02 - 04	I (LG9)	1	12555283
20.	1.652	BOLT,O/PMP(7/16-14X2 3/8)	91 - 97	I (L05,L31)	1	10046007
	1.652	BOLT,O/PMP(7/16-14X2 3/8)	98 - 01	I (L31)	1	10046007
	1.652	BOLT,O/PMP(*41,43,44,46,48,49)(7/16-14X2 3/8)	02 - 04	I (LG9)	1	10046007
21.	1.656	SCREEN,O/PMP	91 - 92	I (L05)	1	03764113
	1.656	SCREEN,O/PMP	94	I (L05)	1	03764113
	1.656	SCREEN,O/PMP	94 - 97	I (L05,L31)	1	12550042
	1.656	SCREEN,O/PMP	98 - 01	I (L31)	1	12550042
	1.656	SCREEN,O/PMP(.742 DIA TUBE)	93	I (L05)	1	10166159
	1.656	SCREEN,O/PMP(*41,43,44,46,48,49)	02 - 04	I (LG9)	1	12550042
22.	1.609	PLUG,OIL PRESS RLF VLV BORE(NON-THD 7/16 DIA,13/32)(CHAMFERED ENDS, STL)	91 - 97	I (L05,L31)	1	03704871
	1.609	PLUG,OIL PRESS RLF VLV BORE(NON-THD 7/16 DIA,13/32)(CHAMFERED ENDS, STL)	98 - 01	I (L31)	1	03704871
	1.609	PLUG,OIL PRESS RLF VLV BORE(*41,43,44,46,48,49) (NON-THD 7/16 DIA,13/32)(CHAMFERED ENDS, STL)	02 - 04	I (LG9)	1	03704871
23.	1.609	VALVE,OIL PRESS RLF	91 - 97	I (L05,L31)	1	03702366
	1.609	VALVE,OIL PRESS RLF	98 - 01	I (L31)	1	03702366
	1.609	VALVE,OIL PRESS RLF(*41,43,44,46,48,49)	02 - 04	I (LG9)	1	03702366
24.	1.609	SPRING,OIL PRESS RLF VLV	96 - 97	I (L05,L31)	1	10044435
	1.609	SPRING,OIL PRESS RLF VLV	98 - 01	I (L31)	1	10044435
	1.609	SPRING,OIL PRESS RLF VLV(*	91 - 95	I (L05)	1	10044435

		1,2,3,4,5,6,7,8,10,11,12,13,14,15,16,17,18,19,20,21,22, 23,24,25,26,27,28,29,30,31,32,33,34,35,36)			
	1.609	SPRING ,OIL PRESS RLF VLV(*41,43,44,46,48,49)	02 - 04	I (LG9)	1 10044435
	1.609	SPRING ,OIL PRESS RLF VLV(*9)	91 - 92	I (L05)	1 03814903
25.	0.648	NUT ,CR/SHF OIL DFL(HEX 3/8-16)(8.917)	91 - 95	I (L05)	5 09442946
	0.648	NUT ,CR/SHF OIL DFL(*41,43,44,46,48,49)(HFH,3/8-16X.425,.8 DIA,GM301M,GM7111M,PREV TORQUE)(HEX 3/8-16)(8.917)	02 - 04	I (LG9)	5 09442946
	0.648	NUT ,CR/SHF OIL DFL(HFH,3/8-16X.425,.8 DIA,GM301M,GM7111M,PREV TORQUE)(HEX 3/8-16)(8.917)	96 - 97	I (L05,L31)	5 09442946
	0.648	NUT ,CR/SHF OIL DFL(HFH,3/8-16X.425,.8 DIA,GM301M,GM7111M,PREV TORQUE)(HEX 3/8-16)(8.917)	98 - 01	I (L31)	5 09442946
26.	1.430	DEFLECTOR ,CR/SHF OIL	91 - 95	I (L05)	1 12557231
	1.430	DEFLECTOR ,CR/SHF OIL	96 - 97	I (L05,L31)	1 12557231
	1.430	DEFLECTOR ,CR/SHF OIL	98 - 01	I (L31)	1 12557231
	1.430	DEFLECTOR ,CR/SHF OIL(*41,43,44,46,48,49)	02 - 04	I (LG9)	1 12557231
27.	1.723	COVER ,O/PMP(INCLS COVER,PLUG,SPR,VLV)	94 - 97	I (L05,L31)	1 10168528
	1.723	COVER ,O/PMP(INCLS COVER,PLUG,SPR,VLV)	98 - 01	I (L31)	1 10168528
	1.723	COVER ,O/PMP(* 1,2,3,4,5,6,7,8,10,11,12,13,14,15,16,17,18,19,20,21,22, 23,24,25,26)(W/COVER, PIN, PLUGS, SPRING & VALVE)	91 - 92	I (L05)	1 14046552
	1.723	COVER ,O/PMP(* 1,2,3,5,7,8,10,11,12,14,17,19,20,21,22,23,24,25,26) (INCLS COVER,PLUG,SPR,VLV)	93	I (L05)	1 10168528
	1.723	COVER ,O/PMP(*41,43,44,46,48,49)(INCLS COVER,PLUG,SPR,VLV)	02 - 04	I (LG9)	1 10168528
	DISCONN	COVER ,O/PMP(*9)	91 - 92	I (L05)	1 10055887
28.	1.723	BOLT ,O/PMP CVR(HFH,M6X1X20,9.8,PZOR)(8.900)(AC- DELCO #11508600)	91 - 97	I (L05,L31)	4 11508600
	1.723	BOLT ,O/PMP CVR(HFH,M6X1X20,9.8,PZOR)(8.900)(AC- DELCO #11508600)	98 - 01	I (L31)	4 11508600
	1.723	BOLT ,O/PMP CVR(*41,43,44,46,48,49) (HFH,M6X1X20,9.8,PZOR)(8.900)(AC-DELCO # 11508600)	02 - 04	I (LG9)	4 11508600
29.	1.609	PIN ,OIL PRESS RLF VLV SPR ST	91 - 97	I (L05,L31)	1 00838839
	1.609	PIN ,OIL PRESS RLF VLV SPR ST	98 - 01	I (L31)	1 00838839
	1.609	PIN ,OIL PRESS RLF VLV SPR ST	02 - 04	I (LG9)	1 00838839
30.	1.428	NUT ,OIL PAN(5/16-18 X 1/4, 286M)(POR)(8.915)	91 - 95	I (L05)	2 12338130
	1.428	NUT ,OIL PAN(5/16-18X20,286M)(PHOSPHATE COATED)(8.917)	95 - 97	I (L05,L31)	AR 01359887

	1.428	NUT ,OIL PAN(5/16-18X20,286M)(PHOSPHATE COATED)(8.917)	98 - 01 I (L31)	AR 01359887
	1.428	NUT ,OIL PAN(*41,43,44,46,48,49)(5/16-18X20,286M)(PHOSPHATE COATED)(8.917)	02 - 04 I (LG9)	AR 01359887
31.	1.453	PLUG ,OIL PAN DRN	00 - 04	
	1.453	PLUG ,OIL PAN DRN(1/2-20,81LG)	95 I (L05)	1 03921988
	1.453	PLUG ,OIL PAN DRN(*1,2,3,4,5,6,7,8,9,10,11,12,13,15,16,17,18,19,20,23,24,25,26)(1/2-20,81LG)	91 - 93 I (L05)	1 03921988
	1.453	PLUG ,OIL PAN DRN(*1,2,3,5,12,15,16,17,19,20,23,24,25,26,27,28,29,30,31,32,33,34,35)(1/2-20,81LG)	94 I (L05)	1 03921988
	1.453	PLUG ,OIL PAN DRN(*14,21,22)(HFH 1/2-20 X 1.00 MAGNETIC)	91 - 93 I (L05)	AR 23011420
	1.453	PLUG ,OIL PAN DRN(*14,22)(HFH 1/2-20 X 1.00 MAGNETIC)	94 I (L05)	AR 23011420
	1.453	PLUG ,OIL PAN DRN(EXC MAGNETIC)(M12X1.75X26.5)	91 - 95 I (L05)	1 10017615
	1.453	PLUG ,OIL PAN DRN(INCLS SEAL)	96 - 97 I (L05,L31)	1 24100042
	1.453	PLUG ,OIL PAN DRN(INCLS SEAL)	98 - 01 I (L31)	1 24100042
	1.453	PLUG ,OIL PAN DRN(*41,43,44,46,48,49)(INCLS SEAL)	02 - 04 I (LG9)	1 24100042
32.	1.456	GASKET ,OIL PAN DRN PLUG	00 - 04	
	1.456	GASKET ,OIL PAN DRN PLUG	91 - 95 I (L05)	1 14090908
	1.456	SEAL ,OIL PAN DRN PLUG(O RING)	96 - 97 I (L05,L31)	1 03536966
	1.456	SEAL ,OIL PAN DRN PLUG(O RING)	98 - 01 I (L31)	1 03536966
	1.456	SEAL ,OIL PAN DRN PLUG(O RING)(*41,43,44,46,48,49)	02 - 04 I (LG9)	1 03536966
33.	8.971	BOLT ,OIL PAN(1/4-20 X 5/8,280M)(HFH,POR)(8.900)	91 - 97 I (L05,L31)	AR 09440033
	8.971	BOLT ,OIL PAN(*14,22,42,43)(1/4-20 X 5/8,280M)(HFH,POR)(8.900)	98 I (L31)	AR 09440033
	8.971	BOLT ,OIL PAN(*34,41,42,43)(1/4-20 X 5/8,280M)(HFH,POR)(8.900)	99 - 01 I (L31)	AR 09440033
	8.971	BOLT ,OIL PAN(*41,43,44,46,48,49)(1/4-20 X 5/8,280M)(HFH,POR)(8.900)	02 - 04 I (LG9)	AR 09440033
34.	8.971	BOLT ,OIL PAN(1/4-20 X 5/8,280M)(HFH,POR)(8.900)	91 - 97 I (L05,L31)	AR 09440033
	8.971	BOLT ,OIL PAN(*14,22,42,43)(1/4-20 X 5/8,280M)(HFH,POR)(8.900)	98 I (L31)	AR 09440033
	8.971	BOLT ,OIL PAN(*34,41,42,43)(1/4-20 X 5/8,280M)(HFH,POR)(8.900)	99 - 01 I (L31)	AR 09440033
	8.971	BOLT ,OIL PAN(*41,43,44,46,48,49)(1/4-20 X 5/8,280M)(HFH,POR)(8.900)	02 - 04 I (LG9)	AR 09440033
35.	1.426	REINFORCEMENT ,OIL PAN	91 - 97 I (L05,L31)	LH 12553058
	1.426	REINFORCEMENT ,OIL PAN	91 - 97 I (L05,L31)	RH 12553059

	1.426	REINFORCEMENT,OIL PAN	98 - 01	I (L31)	LH	12553058
	1.426	REINFORCEMENT,OIL PAN	98 - 01	I (L31)	RH	12553059
	1.426	REINFORCEMENT,OIL PAN(*41,43,44,46,48,49)	02 - 04	I (LG9)	LH	12553058
	1.426	REINFORCEMENT,OIL PAN(*41,43,44,46,48,49)	02 - 04	I (LG9)	RH	12553059
36.	1.426	PAN,OIL(* 1,2,3,4,5,6,7,9,10,11,12,13,15,16,17,18,19,20,23,24)	91 - 92	I (L05)	1	10242245
	1.426	PAN,OIL(* 1,2,3,5,12,15,17,19,20,21,23,24,27,28,29,30,32,33,34)	94	I (L05)	1	10242245
	1.426	PAN,OIL(* 1,2,3,5,12,15,19,20,23,24,27,28,29,30,32,33,34,36)	95	I (L05)	1	10242245
	1.426	PAN,OIL(*1,2,3,5,7,8,10,11,12,17,19,20,21,23,24)	93	I (L05)	1	10242245
	1.426	PAN,OIL(*14,17,19,20,21,22,23,24,27,34,35,37,38,39)	96 - 97	I (L05,L31)	1	10242245
	1.426	PAN,OIL(*14,22)(REQUIRES 1 GASKET P/N 10108676)	94	I (L05)	1	12559020
	1.426	PAN,OIL(*14,22,34,42.)	98 - 99	I (L31)	1	10242245
	1.426	PAN,OIL(*25,26)	92 - 95	I (L05)	1	10242246
	1.426	PAN,OIL(*34,42,43)	00 - 01	I (L31)	1	10242245
	1.426	PAN,OIL(*40,41)	96 - 97	I (L05,L31)	1	10242246
	1.426	PAN,OIL(*41)	98 - 01	I (L31)	1	10242246
	1.426	PAN,OIL(*41,48)	02 - 04	I (LG9)	1	10242246
	1.426	PAN,OIL(*43,44,49)	02 - 04	I (LG9)	1	10242245
	1.426	PAN,OIL(*8,14,21,22)(REQUIRES 1 GASKET P/N 10108676)	91 - 92	I (L05)	1	12559020
37.	1.429	GASKET,OIL PAN	00 - 01			
	1.429	GASKET,OIL PAN	91 - 92	I (L05)	1	10108676
	1.429	GASKET,OIL PAN(*41,43,44,46,48,49)	02 - 04	I (LG9)	1	10108676
38.	0.137	STUD,CR/SHF RR OIL SEAL RET(PART OF 43)(5/16 X 18 X 1 43/64)(1.428)	91 - 95	I (L05)	2	14080362
	0.137	STUD,CR/SHF RR OIL SEAL RET(PART OF 43)(5/16 X 18 X 1 43/64)(1.428)	96 - 01	I (L05,L31)	2	14080362
	0.137	STUD,CR/SHF RR OIL SEAL RET(PART OF 43)(5/16 X 18 X 1 43/64)(1.428)	02 - 03	I (LG9)	2	14080362
	0.137	STUD,CR/SHF RR OIL SEAL RET(PART OF 43)(5/16 X 18 X 1 43/64)(1.428)	04	I (LG9)	2	14080362
39.	0.137	NUT,CR/SHF RR OIL SEAL RET(HFX,1/4- 20X.234,284M,69K,POR,240)(8.917)	91 - 95	I (L05)	1	09439915
	0.137	NUT,CR/SHF RR OIL SEAL RET(HFX,1/4- 20X.234,284M,69K,POR,240)(8.917)	96 - 97	I (L05,L31)	1	09439915
	0.137	NUT,CR/SHF RR OIL SEAL RET(HFX,1/4- 20X.234,284M,69K,POR,240)(8.917)	98 - 01	I (L31)	1	09439915
	0.137	NUT,CR/SHF RR OIL SEAL RET(*41,43,44,46,48,49) (HFX,1/4-20X.234,284M,69K,POR,240)(8.917)	02 - 04	I (LG9)	1	09439915
40.	0.137	BOLT,CR/SHF RR OIL SEAL HSG(1/4-20X1 3/4)	91 - 95	I (L05)	1	14088562

	0.137	BOLT,CR/SHF RR OIL SEAL HSG(1/4-20X1 3/4)	96 - 97	I (L05,L31)	1	14088562
	0.137	BOLT,CR/SHF RR OIL SEAL HSG(1/4-20X1 3/4)	98 - 01	I (L31)	1	14088562
	0.137	BOLT,CR/SHF RR OIL SEAL HSG(1/4-20X1 3/4)	02 - 03	I (LG9)	1	14088562
	0.137	BOLT,CR/SHF RR OIL SEAL HSG(1/4-20X1 3/4)	04	I (LG9)	1	14088562
41.	NS	SEAL,CR/SHF RR OIL			1	
42.	0.137	BOLT,CR/SHF RR OIL SEAL HSG(1/4-20X7/8)	91 - 95	I (L05)	2	14088561
	0.137	BOLT,CR/SHF RR OIL SEAL HSG(1/4-20X7/8)	96 - 97	I (L05,L31)	2	14088561
	0.137	BOLT,CR/SHF RR OIL SEAL HSG(1/4-20X7/8)	98 - 01	I (L31)	2	14088561
	0.137	BOLT,CR/SHF RR OIL SEAL HSG(1/4-20X7/8)	02 - 03	I (LG9)	2	14088561
	0.137	BOLT,CR/SHF RR OIL SEAL HSG(1/4-20X7/8)	04	I (LG9)	2	14088561
43.	0.137	HOUSING,CR/SHF RR OIL SEAL(0.659)	91 - 93	I (L05)	1	14088556
	0.137	HOUSING,CR/SHF RR OIL SEAL(0.659)	96	I (L05,L31)	1	14088556
	0.137	HOUSING,CR/SHF RR OIL SEAL	97	I (L05,L31)	1	12554312
	0.137	HOUSING,CR/SHF RR OIL SEAL	98 - 01	I (L31)	1	12554312
	0.137	HOUSING,CR/SHF RR OIL SEAL(* 1,3,5,12,14,15,17,19,20,21,22,23,24,25,27,29,30,31,32, 33,34,35,36)(0.659)	94 - 95	I (L05)	1	14088556
	0.137	HOUSING,CR/SHF RR OIL SEAL(*2,26,28)	94 - 95	I (L05)	1	14096052
	0.137	HOUSING,CR/SHF RR OIL SEAL(*41,43,44,46,48,49)	02 - 04	I (LG9)	1	12554312
44.	0.137	STUD,CR/SHF RR OIL SEAL RET(1/4-20 X 2 3/16)	91 - 97	I (L05)	1	14101058
	0.137	STUD,CR/SHF RR OIL SEAL RET(1/4-20 X 2 3/16)	96 - 01	I (L31)	1	14101058
	0.137	STUD,CR/SHF RR OIL SEAL RET(1/4-20 X 2 3/16)	02 - 04	I (LG9)	1	14101058
45.	0.137	GASKET,CR/SHF RR OIL SEAL HSG	91 - 95	I (L05)	1	12555771
	0.137	GASKET,CR/SHF RR OIL SEAL HSG	96 - 97	I (L05,L31)	1	12555771
	0.137	GASKET,CR/SHF RR OIL SEAL HSG	98 - 01	I (L31)	1	12555771
	0.137	GASKET,CR/SHF RR OIL SEAL HSG	02 - 04	I (LG9)	1	12555771
46.	0.056	STUD,CR/SHF BRG CAP(7/16-14; 3/8-14 FLG END, STL)	99 - 01	I (L31)	AR	12561389
	0.056	STUD,CR/SHF BRG CAP(* 1,2,3,4,5,6,7,8,10,11,12,13,15,16,17,18,19,20,21,23,24, 25,26,27,28,29,30,31,32,33,34,35)(7/16-14; 3/8-14 FLG END, STL)	91 - 94	I (L05)	AR	12561389
	0.056	STUD,CR/SHF BRG CAP(*41,43,44,46,48,49)(7/16-14; 3/8-14 FLG END, STL)	02 - 04	I (LG9)	AR	12561389
47.	0.056	BOLT,CR/SHF BRG CAP(7/16-14X3.34)	91 - 97	I (L05)	10	12561388
	0.056	BOLT,CR/SHF BRG CAP(7/16-14X3.34)	98 - 01	I (L31)	10	12561388
	0.056	BOLT,CR/SHF BRG CAP(*41,43,44,46,48,49)(7/16- 14X3.34)	02 - 04	I (LG9)	10	12561388
48.	DISCONN	CAP,CR/SHF BRG	91 - 93	I (L05)		03932363
	NS	CAP,CR/SHF BRG(POS # 1,2,3,4)(* 1,2,3,5,12,14,15,17,19,20,21,22,23,24,25,26,28,29,30,3 1,32,34,35,36,37,38,39,40.)	94 - 97			

		DISCONN CAP,CR/SHF BRG(POS #2,3,4)(*27,33)	94 - 97 I (L05)	3 03956686
49.	0.137	PIN,CR/SHF RR OIL SEAL HSG LOC(*41,43,44,46,48,49)(SPRING TYPE S 7/16X9/16 STL ZP)(8.940)	02 - 04 I (LG9)	1 09441003
	0.137	PIN,CR/SHF RR OIL SEAL HSG LOC(SPRING TYPE S 7/16X9/16 STL ZP)(8.940)	91 - 97 I (L05)	1 09441003
	0.137	PIN,CR/SHF RR OIL SEAL HSG LOC(SPRING TYPE S 7/16X9/16 STL ZP)(8.940)	98 - 01 I (L31)	1 09441003
50.	0.669	PIN,FLYWHL LOC(7/16 DIA. X 7/8)	91 - 97 I (L05,L31)	1 03701679
	0.669	PIN,FLYWHL LOC(7/16 DIA. X 7/8)	98 - 01 I (L31)	1 03701679
	0.669	PIN,FLYWHL LOC(7/16 DIA. X 7/8)	02 - 04 I (LG9)	1 03701679
51.	0.666	FLYWHEEL,ENG(*1,2,10,11,16,17,20,25,26)	91 - 93 I (L05)	1 14096020
	0.666	FLYWHEEL,ENG(*1,2,14,15,17,25,26,28,29,30,31,32,35)	94 I (L05)	1 14096020
	0.666	FLYWHEEL,ENG(*1,2,20,25,26,28,29,30,32,33,36)	95 I (L05)	1 14096020
	0.666	FLYWHEEL,ENG(*14,19,21,22,23,24,27,34,35,37,39.) (INCLS RING GEAR)	96 - 97 I (L05,L31)	1 10105832
	0.666	FLYWHEEL,ENG(*14,22,34.) (INCLS RING GEAR)	98 - 99 I (L31)	1 10105832
	0.666	FLYWHEEL,ENG(*17,20,38,40,41)	96 - 97 I (L05)	1 14096020
	0.666	FLYWHEEL,ENG(*3,4,5,7,9,12,13,14,15,18,19,21,22,23,24) (INCLS RING GEAR)	91 - 93 I (L05)	1 10105832
	0.666	FLYWHEEL,ENG(*3,5,12,14,15,19,22,23,24,27,34) (INCLS RING GEAR)	95 I (L05)	1 10105832
	0.666	FLYWHEEL,ENG(*3,5,12,14,19,21,22,23,24,27,34) (INCLS RING GEAR)	94 I (L05)	1 10105832
	0.666	FLYWHEEL,ENG(*34,42,43) (INCLS RING GEAR)	00 - 01 I (L31)	1 10105832
	0.666	FLYWHEEL,ENG(*41)	98 - 01 I (L31)	1 14096020
	0.666	FLYWHEEL,ENG(*41,46,48)	02 - 04 I (LG9)	1 14096020
	0.666	FLYWHEEL,ENG(*43,44,49) (INCLS RING GEAR)	02 - 04 I (LG9)	1 10105832
	0.666	FLYWHEEL,ENG(*6) (INCLS FLYWHEEL, RING GEAR, LABEL & WEIGHTS)	91 - 92 I (L05)	1 14088761
	0.666	FLYWHEEL,ENG(*8,9,17)	91 - 93 I (L05)	1 14088650
52.	0.649	BEARING,CLU PILOT(*14,22)(27.8MM)(AC-DELCO #CT1078)	94 - 97 I (L05)	1 14061685
	0.649	BEARING,CLU PILOT(*14,22,42)(27.8MM)(AC-DELCO #CT1078)	97 - 01 I (L31)	1 14061685
	0.649	BEARING,CLU PILOT(*43)(27.8MM)(AC-DELCO #CT1078)	02 - 04 I (LG9)	1 14061685
53.	0.859	PLATE KIT,CLU PRESS & DRVN(W/CVR)(PART OF 54)	02 - 04	
	0.859	PLATE KIT,CLU PRESS & DRVN(W/CVR)(*14)(PART OF 54)	94 - 95 I (L05)	1 12388069

	0.859	PLATE KIT,CLU PRESS & DRVN(W/CVR)(*14)(PART OF 54)	97	I (L05,MW3)	1	15732268
	0.859	PLATE KIT,CLU PRESS & DRVN(W/CVR)(*14)(PART OF 54)	97	I (L05,M50)	1	15732268
	0.859	PLATE KIT,CLU PRESS & DRVN(W/CVR)(*14,21)(PART OF 54)	91 - 93	I (L05)	1	12388069
	0.859	PLATE KIT,CLU PRESS & DRVN(W/CVR)(*42)(PART OF 54)	98 - 01	I (L31)	1	15732268
54.	0.859	PLATE KIT,CLU PRESS & DRVN(W/CVR)(PART OF 53)	02 - 04			
	0.859	PLATE KIT,CLU PRESS & DRVN(W/CVR)(*14)(PART OF 53)	94 - 95	I (L05)	1	12388069
	0.859	PLATE KIT,CLU PRESS & DRVN(W/CVR)(*14)(PART OF 53)	97	I (L05,MW3)	1	15732268
	0.859	PLATE KIT,CLU PRESS & DRVN(W/CVR)(*14)(PART OF 53)	97	I (L05,M50)	1	15732268
	0.859	PLATE KIT,CLU PRESS & DRVN(W/CVR)(*14,21)(PART OF 53)	91 - 93	I (L05)	1	12388069
	0.859	PLATE KIT,CLU PRESS & DRVN(W/CVR)(*42)(PART OF 53)	98 - 01	I (L31)	1	15732268
55.	0.669	BOLT,FLYWHL(7/16-20 X 31/32)	94 - 95	I (L05)	6	12337973
	0.669	BOLT,FLYWHL(7/16-20 X 31/32)	96 - 97	I (L05,L31)	6	12337973
	0.669	BOLT,FLYWHL(7/16-20 X 31/32)	98 - 01	I (L31)	6	12337973
	0.669	BOLT,FLYWHL(*1,2,3,4,5,7,8,9,10,11,12,13,14,15,16,17,18,19,20)(7/16-20 X 31/32)	91 - 93	I (L05)	6	12337973
	0.669	BOLT,FLYWHL(*41,43,44,46,48,49)(7/16-20X.97)	02 - 04	I (LG9)	6	00839756
	0.669	BOLT,FLYWHL(*41,43,44,48)(7/16-20 X 31/32)	02 - 04	I (LG9)	6	12337973
	0.669	BOLT,FLYWHL(*6)(7/16-20 X 45/64)(0.685)	91 - 92	I (L05)	6	14088764
56.	0.034	PLUG,ENG BLK CORE HOLE	91 - 97	I (L31,L05)	8	88891749
	0.034	PLUG,ENG BLK CORE HOLE	98 - 01	I (L31)	8	88891749
	0.034	PLUG,ENG BLK CORE HOLE(*22,42,43)(41.5MM DIA)(STEEL)	98 - 00	I (L31)	1	00838538
	0.034	PLUG,ENG BLK CORE HOLE(*27,33)(41.5MM DIA)(STEEL)	95 - 97	I (L05,L31)	1	00838538
	0.034	PLUG,ENG BLK CORE HOLE(*41,43,44,46,48,49)	02 - 04	I (LG9)	8	88891749
57.	DISCONN	SHIM KIT(#1,2,3,4)	91 - 93	I (L05)	AR	03911010
	DISCONN	SHIM KIT(RR)	91 - 93	I (L05)	AR	03911011
58.	0.096	BEARING KIT,CR/SHF(STD)(RR)	91 - 95	I (L05)	1	10120993
	0.096	BEARING KIT,CR/SHF(.010 U.S./STD FLG)(RR)	91 - 95	I (L05)	1	12329793
	0.096	BEARING KIT,CR/SHF(#1,2,3,4)(.010 U.S.)	91 - 95	I (L05)	4	12329428
	0.096	BEARING KIT,CR/SHF(#1,2,3,4)(.020 U.S.)	91 - 95	I (L05)	4	12329429
	0.096	BEARING KIT,CR/SHF(#1,2,3,4)(.001 U.S./STD)(REPL	91 - 95	I (L05)	4	12531215

		0.0006" U.S. BRG KIT)			
	0.096	BEARING KIT ,CR/SHF(#1,2,3,4)(.001 U.S./STD)(REPL 0.0006" U.S. BRG KIT)	96 - 01	I (L31)	4 12531215
	0.096	BEARING KIT ,CR/SHF(#1,2,3,4 STD)(STD)	91 - 95	I (L05)	4 10120990
	0.096	BEARING KIT ,CR/SHF(#1,2,3,4)(*41,43,44,46,48,49)(.001 U.S./STD)(REPL 0.0006" U.S. BRG KIT)	02 - 04	I (LG9)	4 12531215
	0.096	BEARING KIT ,CR/SHF(#5)(LIPPED)(.001 U.S.)(RR)(FEDERAL-MOGUL)	96 - 01	I (L31)	1 12528826
	0.096	BEARING KIT ,CR/SHF(#5)(LIPPED)(41,43,44,46,48,49)(.001 U.S.)(RR)(FEDERAL-MOGUL)	02 - 04	I (LG9)	1 12528826
	0.096	BEARING KIT ,CR/SHF(RR)(.020 U.S./STD FLG)	91 - 95	I (L05)	1 12329794
	0.096	BEARING KIT ,CR/SHF(RR# 5)(.002 U.S/STD FLG)(.002 U.S.)	91 - 95	I (L05)	1 12329792
	0.096	BEARING KIT ,CR/SHF(RR#5)(.001"U.S.,.008"O.S. FLG)(#5)(.001 U.S.,.008 O.S. FLG)	91 - 95	I (L05)	1 10181326
	0.096	BEARING KIT ,CR/SHF(RR#5)(STD)(.008"O.S.FLG)(STD)(.008 O.S. FLG)	91 - 95	I (L05)	1 10181325
59.	0.662	KEY ,CR/SHF BALR(19.05MM X 4.75MM)(8.960)	91 - 93	I (L05)	2 00106751
	0.662	KEY ,CR/SHF BALR(19.05MM X 4.75MM)(8.960)	96 - 97	I (L05,L31)	2 00106751
	0.662	KEY ,CR/SHF BALR(19.05MM X 4.75MM)(8.960)	98 - 01	I (L31)	2 00106751
	0.662	KEY ,CR/SHF BALR(*1,2,3,5,12,14,15,17,19,20,21,22,23,24,25,26,28,29,30,31,32,24,35,36)(19.05MM X 4.75MM)(8.960)	94 - 95	I (L05)	2 00106751
	0.662	KEY ,CR/SHF BALR(*27,33)	94 - 97	I (L05)	1 10128303
	0.662	KEY ,CR/SHF BALR(*41,43,44,46,48,49)(19.05MM X 4.75MM)(8.960)	02 - 04	I (LG9)	2 00106751
	0.662	KEY ,CR/SHF PUL HUB	00 - 04		
	0.662	KEY ,CR/SHF PUL HUB(19.05MM X 4.75MM)(8.960)	91 - 93	I (L05)	2 00106751
	0.662	KEY ,CR/SHF PUL HUB(*1,2,3,5,12,14,15,17,19,20,21,22,23,24,25,26,28,29,30,31,32,24,35,36)(19.05MM X 4.75MM)(8.960)	94 - 95	I (L05)	2 00106751
60.	NS	GEAR ,CR/SHF(*KIT1)	91 - 93	I (L05)	1
	NS	GEAR ,CR/SHF(*KIT1)	94 - 95	I (L05)	
	0.728	SPROCKET ,CR/SHF(*1,3,4,5,6,7,8,9,10,12,13,14,22,24,25,26)(18 TEETH)	91 - 93	I (L05)	1 14088784
	0.728	SPROCKET ,CR/SHF(*1,3,5,12,14,15,19,20,22,23,24,25,27,28,29,30,32,33,34,36)(18 TEETH)	95	I (L05)	1 14088784
	0.728	SPROCKET ,CR/SHF(*14,17,19,20,21,22,23,24,34,35,37,38,39,40,41)(18 TEETH)	96 - 97	I (L05,L31)	1 14088784
	0.728	SPROCKET ,CR/SHF(*15,16,17,18,19,20,21,23)(18 TEETH)(.40/.41" TOOTH THICKNESS)	91 - 93	I (L05)	1 10128346

	0.728	SPROCKET,CR/SHF(*19,20,21,23,27,31,32,34,35)(18 TEETH)(.40/.41" TOOTH THICKNESS)	94	I (L05)	1	10128346
	0.728	SPROCKET,CR/SHF(*19,20,21,23,27,31,32,34,35)(18 TEETH)	94	I (L05)	1	14088784
	0.728	SPROCKET,CR/SHF(*22,34,41,42,43)(18 TEETH)	98 - 01	I (L31)	1	14088784
	0.728	SPROCKET,CR/SHF(*27,33)(18 TEETH)(.40/.41" TOOTH THICKNESS)	95 - 97	I (L05)	1	10128346
	0.728	SPROCKET,CR/SHF(*41,43,44,46,48,49)(18 TEETH)	02 - 04	I (LG9)	1	14088784
61.	0.646	CRANKSHAFT,(*1,3,4,5,6,10,12,13,14,15,16,17,18,19,20,21,22,23,24,25,28,30,31,32,34,35,36)	91 - 95	I (L05)	1	14088527
	0.646	CRANKSHAFT,(*14,22)	95 - 97	I (L05)	1	14088527
	0.646	CRANKSHAFT,(*14,22,34,41,43)	98 - 99	I (L31)	1	10243068
	0.646	CRANKSHAFT,(*17,19,20,21,23,24,35,39,40.)	96 - 97	I (L05)	1	14088527
	0.646	CRANKSHAFT,(*27,33)	94 - 97	I (L05)	1	12556307
	0.646	CRANKSHAFT,(*34,37,38,41)	96 - 97	I (L31)	1	10243068
	0.646	CRANKSHAFT,(*34,41,42,43)	00 - 01	I (L31)	1	10243068
	0.646	CRANKSHAFT,(*41,43,44,46,48,49)	02 - 04	I (LG9)	1	10243068
	0.646	CRANKSHAFT,(*8)	93	I (L05)	1	14088527
62.	0.659	BALANCER,CR/SHF(*1,2,3,4,5,6,10,11,12,13,15,16,17,18,19,20,23,24,25,26)	91 - 93	I (L05)	1	12551537
	0.659	BALANCER,CR/SHF(*1,2,3,5,12,15,19,20,23,24,25,26,28,29,30,32,34)	94 - 95	I (L05)	1	12551537
	0.659	BALANCER,CR/SHF(*14,17,21,22)(DAMPER HAS TIMING MARKS)	96 - 97	I (L05)	1	12555879
	0.659	BALANCER,CR/SHF(*17,21,31,35)(DAMPER HAS TIMING MARKS)	94	I (L05)	1	12555879
	0.659	BALANCER,CR/SHF(*19,20,23,24,35,39,40)	96 - 97	I (L05)	1	12553165
	0.659	BALANCER,CR/SHF(*22,34,41,42,43)(DAMPER HAS TIMING MARKS)	98 - 01	I (L31)	1	12555879
	0.659	BALANCER,CR/SHF(*27,33)	94 - 97	I (L05)	1	10128489
	0.659	BALANCER,CR/SHF(*34,37,38,41)(DAMPER HAS TIMING MARKS)	96 - 97	I (L31)	1	12555879
	0.659	BALANCER,CR/SHF(*36)(DAMPER HAS TIMING MARKS)	95	I (L05)	1	12555879
	0.659	BALANCER,CR/SHF(*41,43,44,46,48,49)	02 - 04	I (LG9)	1	10243271
	0.659	BALANCER,CR/SHF(*7,8,21)(DAMPER HAS TIMING MARKS)	91 - 93	I (L05)	1	12555879
	0.659	BALANCER,CR/SHF(*9,14,22)	91 - 95	I (L05)	1	06272222
63.	0.685	PIN,TRANS LOC(5/8 X 1 3/16)(8.939)	91 - 97	I (L05)	2	01453658
	0.685	PIN,TRANS LOC(5/8 X 1 3/16)(8.939)	98 - 01	I (L31)	2	01453658
	0.685	PIN,TRANS LOC(*41,43,44,46,48,49)(5/8 X 1 3/16)	02 - 04	I (LG9)	2	01453658

		(8.939)			
64.	1.079	BOLT,W/PMP (* 1,2,3,4,5,6,7,8,10,11,12,13,15,16,17,18,19,20,23,24,25, 26)(3/8-16 X 1 3/4 CAD)(HEX)(8.900)	91 - 93	I (L05)	2 09439637
	1.079	BOLT,W/PMP (* 1,2,3,4,5,6,7,8,10,11,12,13,15,16,17,18,19,20,23,24,25, 26,28,29,30,31,32,34,36)(3/8-16X2.75)(2.042)	91 - 95	I (L05)	1 15991978
	1.079	BOLT,W/PMP (* 1,2,3,5,12,15,17,19,20,21,23,24,25,26,28,29,30,31,32,3 4,36)(3/8-16 X 1 3/4 CAD)(HEX)(8.900)	94 - 95	I (L05)	2 09439637
	1.079	BOLT,W/PMP (*14,22)(3/8-16X2 1/4)(8.900)	94 - 97	I (L05)	1 09442012
	1.079	BOLT,W/PMP (* 17,19,20,21,23,24,27,34,35,37,38,39,40,41.)(3/8- 16X2.75)(2.042)	96 - 97	I (L05,L31)	1 15991978
	1.079	BOLT,W/PMP (*17,19,20,21,23,24,34,35,37,38,39,40,41) (3/8-16 X 1 3/4 CAD)(HEX)(8.900)	96 - 97	I (L05,L31)	2 09439637
	1.079	BOLT,W/PMP (*22,42,43)(3/8-16 X 2 1/8)	98 - 01	I (L31)	4 12552096
	1.079	BOLT,W/PMP (*27,33)(HFH 3/8-16X2.00 280M POR 6174M)(8.900)	94 - 97	I (L05)	3 09440073
	1.079	BOLT,W/PMP (*34,41)(3/8-16 X 1 3/4 CAD)(HEX)(8.900)	98 - 01	I (L31)	2 09439637
	1.079	BOLT,W/PMP (*34,41.)(3/8-16X2.75)(2.042)	98 - 00	I (L31)	1 15991978
	1.079	BOLT,W/PMP (*41,43,44,46,48,49)(3/8-16X2.75)(2.042)	02 - 04	I (LG9)	1 15991978
	1.079	BOLT,W/PMP (*41,44,46,48,49)(3/8-16 X 1 3/4 CAD) (HEX)(8.900)	02 - 04	I (LG9)	2 09439637
	1.079	BOLT,W/PMP (*43)(3/8-16 X 2 1/8)	02 - 04	I (LG9)	4 12552096
	1.079	BOLT,W/PMP (*9,14,21,22)(3/8-16X2 1/4)(8.900)	91 - 93	I (L05)	1 09442012
	1.079	BOLT,W/PMP (USED W/SEALANT)(*27,33)(8.900)	94 - 97	I (L05)	4 09423592
65.	1.069	PUMP,WAT	91 - 99		
	1.069	PUMP,WAT	00 - 04		
	1.069	PUMP KIT,WAT (* 1,2,3,4,5,6,7,8,10,11,12,13,15,16,17,18,19,20,23,24,25, 26)(AC-DELCO #251-638)	91 - 93	I (L05)	1 88893280
	1.069	PUMP KIT,WAT (* 1,2,3,5,12,15,17,19,20,21,23,24,25,26,28,29,30,31,34,3 6)(AC-DELCO #251-638)	94 - 95	I (L05)	1 88893280
	1.069	PUMP KIT,WAT (*14,22)(AC-DELCO #251-544)	94 - 97	I (L05)	1 88894341
	1.069	PUMP KIT,WAT (* 17,19,20,21,23,24,34,35,37,38,39,40,41.)(AC-DELCO # 251-638)	96 - 97	I (L05,L31)	1 88893280
	1.069	PUMP KIT,WAT (*22,42,43)(INCLS BOLT,BRG,CONN,CVR,HSG,HUB,IMP,LABEL,NIPPLE & SEAL)(AC-DELCO #251-579)	98 - 01	I (L31)	1 12532528
	1.069	PUMP KIT,WAT (*27,33)(AC-DELCO #251-537)	94 - 97	I (L05)	1 12529560

	1.069	PUMP KIT,WAT(*34,41.)(AC-DELCO #251-638)	98 - 01 I (L31)	1	88893280
	1.069	PUMP KIT,WAT(*41,44,46,48,49)(AC-DELCO #251-638)	02 - 04 I (LG9)	1	88893280
	1.069	PUMP KIT,WAT(*43)(INCLS BOLT,BRG,CONN,CVR,HSG,HUB,IMP,LABEL,NIPPLE & SEAL)(AC-DELCO #251-579)	02 - 04 I (LG9)	1	12532528
	1.069	PUMP KIT,WAT(INCLS GASKET)(INCLS BOLT,BRG,CONN,CVR,HSG,HUB,IMP,LABEL,NIPPLE & SEAL)(AC-DELCO #251-579)	96 I (L31)	1	12532528
66.	1.079	GASKET,W/PMP(AC-DELCO #251-2005)	91 - 93 I (L05)	1	03754587
	1.079	GASKET,W/PMP(* 1,2,3,5,12,14,15,17,19,20,21,22,23,24,25,26,28,29,30,3 1,32,34,35,36)(AC-DELCO #251-2005)	94 - 95 I (L05)	2	03754587
	1.079	GASKET,W/PMP(* 14,17,19,20,21,22,23,24,34,35,37,38,39,40,41.)(AC- DELCO #251-2005)	96 - 97 I (L05,L31)	2	03754587
	1.079	GASKET,W/PMP(*22,34,41,42,43)(AC-DELCO #251- 2005)	98 - 01 I (L31)	2	03754587
	1.079	GASKET,W/PMP(*27,33)(AC-DELCO #251-2035)	94 - 97 I (L05)	2	10128343
	1.079	GASKET,W/PMP(*41,43,44,46,48,49)(AC-DELCO #251- 2005)	02 - 04 I (LG9)	2	03754587
67.	0.519	CAMSHAFT,(*1,3,4,5,6,10,12,13,24,25)	91 - 93 I (L05,EP2)	1	00340284
	0.519	CAMSHAFT,(*1,3,5,12,15,24,25,28,30)	94 - 95 I (L05,EP2)	1	00340284
	0.519	CAMSHAFT,(*14,22)	94 - 97 I (L05)	1	14088839
	0.519	CAMSHAFT,(*14,22,42,43)	97 - 01 I (L31)	1	10241264
	0.519	CAMSHAFT,(*17,19,20,21,23,24,27,34,35,37,38,40,41)	96 - 97 I (L05)	1	14097395
	0.519	CAMSHAFT,(*17,19,20,21,23,31,32,34,35,36)	94 - 95 I (L05)	1	14097395
	0.519	CAMSHAFT,(*18,19,20,23)	91 - 93 I (L05)	1	14097395
	0.519	CAMSHAFT,(*2,11,26)	91 - 93 I (L05,EP2)	1	06272971
	0.519	CAMSHAFT,(*2,26,29)	94 - 95 I (L05,EP2)	1	06272971
	0.519	CAMSHAFT,(*27,33)	94 - 95 I (L05)	1	10224241
	0.519	CAMSHAFT,(*34,41.)	98 - 01 I (L31)	1	14097395
	0.519	CAMSHAFT,(*39)	96 - 97 I (L05,EP2)	1	00340284
	0.519	CAMSHAFT,(*41,44,46,48,49)	02 - 04 I (LG9)	1	14097395
	0.519	CAMSHAFT,(*43)	02 - 04 I (LG9)	1	10241264
	0.519	CAMSHAFT,(*7,8)	91 - 93 I (L05)	1	03896962
	0.519	CAMSHAFT,(*9,14,21,22)	91 - 93 I (L05)	1	14088839
68.	0.539	BEARING,CM/SHF(*41,43,44,46,48,49)(POS #1)	02 - 04 I (LG9)	1	12453170
	0.539	BEARING,CM/SHF(*41,43,44,46,48,49)(POSN #2-5)	02 - 04 I (LG9)	2	12453171
	0.539	BEARING,CM/SHF(*41,43,44,46,48,49)(POSN #3-4)	02 - 04 I (LG9)	2	12453172
	0.539	BEARING,CM/SHF(POS #3 & 4)	98 - 01 I (L31)	2	12453172
	0.539	BEARING,CM/SHF(POSN #1)	91 - 97 I (L05)	1	12453170
	0.539	BEARING,CM/SHF(POSN #2-5)	91 - 97 I (L05)	2	12453171

	0.539	BEARING,CM/SHF(POSN #2-5)	98 - 01	I (L31)	2	12453171
	0.539	BEARING,CM/SHF(POSN #3-4)	91 - 97	I (L05)	2	12453172
	0.539	BEARING,CM/SHF(POSN 1)	98 - 01	I (L31)	1	12453170
69.	1.531	PLUG,ENG BLK OIL GAL(1/2" STEEL EXPANSION PLUG)(8.970)	91 - 97	I (L05,L31)	1	03701638
	1.531	PLUG,ENG BLK OIL GAL(8.153)	91 - 97	I (L05,L31)	1	03738198
	1.531	PLUG,ENG BLK OIL GAL(CUP,.57X.25,.025 HOLE IN CTR,1008,PL)	91 - 97	I (L05,L31)	2	10110897
	1.531	PLUG,ENG BLK OIL GAL(CUP 15/32 X 5/16)	91 - 97	I (L05,L31)	1	14091563
	1.531	PLUG,ENG BLK OIL GAL(HEX SOC,1/4-18 THD,.69 LEN,1038,PC,DOG PT)(W/SEALANT)(8.971)	97	I (L05,L31)	1	12338136
	1.531	PLUG,ENG BLK OIL GAL(1/4-18X0.56)(STEEL)(0.034)(AC-DELCO #14084945)	97 - 01	I (L31)	2	14084945
	1.531	PLUG,ENG BLK OIL GAL(1/2" STEEL EXPANSION PLUG)(8.970)	98 - 00	I (L31)	1	03701638
	1.531	PLUG,ENG BLK OIL GAL(8.153)	98 - 00	I (L31)	1	03738198
	1.531	PLUG,ENG BLK OIL GAL(CUP,.57X.25,.025 HOLE IN CTR,1008,PL)	98 - 01	I (L31)	2	10110897
	1.531	PLUG,ENG BLK OIL GAL(CUP 15/32 X 5/16)	98 - 01	I (L31)	1	14091563
	1.531	PLUG,ENG BLK OIL GAL(HEX SOC,1/4-18 THD,.69 LEN,1038,PC,DOG PT)(W/SEALANT)(8.971)	99 - 01	I (L31)	1	12338136
	1.531	PLUG,ENG BLK OIL GAL(CUP,.57X.25,.025 HOLE IN CTR,1008,PL)	02 - 04	I (LG9)	2	10110897
	1.531	PLUG,ENG BLK OIL GAL(*41,43,44)(1/4-18X0.56)(STEEL)(0.034)(AC-DELCO #14084945)	02 - 04	I (LG9)	2	14084945
	1.531	PLUG,ENG BLK OIL GAL(*41,43,44,46,48,49)(HEX SOC,1/4-18 THD,.69 LEN,1038,PC,DOG PT)(W/SEALANT)(8.971)	02 - 04	I (LG9)	1	12338136
	1.531	PLUG,ENG BLK OIL GAL(*41,43,44,46,48,49)(CUP 15/32 X 5/16)	02 - 04	I (LG9)	1	14091563
	1.531	PLUG,ENG BLK OIL GAL(1/4-18X0.56,STEEL,PC)(1/4-18X0.56)(STEEL)(0.034)(AC-DELCO #14084945)	97 - 99	I (L31)	2	14084945
70.	0.529	BOLT,CM/SHF RET(1/4-20X1/2, 15/32OD)(HEX SOC TORX)	97 - 01	I (L31)	2	14093637
	0.529	BOLT,CM/SHF RET(*15,16,17,18,19,20,21,23)(1/4-20X1/2, 15/32OD)(HEX SOC TORX)	91 - 93	I (L05)	2	14093637
	0.529	BOLT,CM/SHF RET(*17,19,20,21,23,27,31,32,33,34,35,36)(1/4-20X1/2, 15/32OD)(HEX SOC TORX)	94 - 95	I (L05)	2	14093637
	0.529	BOLT,CM/SHF RET(*41,43,44,46,48,49)(1/4-20X1/2, 15/32OD)(HEX SOC TORX)	02 - 04	I (LG9)	2	14093637
71.	0.529	RETAINER,CM/SHF(*15,16,17,18,19,20,21,23)	91 - 93	I (L05)	1	10168501
	0.529	RETAINER,CM/SHF(*17,19,20,21,23,27,31,32,33,34,35,36)	96 - 97	I (L05,L31)	1	10168501

		17,19,20,21,23,24,34,35,37,38,40,41.)			
	0.529	RETAINER,CM/SHF(*17,19,20,21,23,27,31,32,34,35,36)	94 - 95	I (L05)	1 10168501
	0.529	RETAINER,CM/SHF(*22,34,41,42,43)	98 - 01	I (L31)	1 10168501
	0.529	RETAINER,CM/SHF(*41,43,44,46,48,49)	02 - 04	I (LG9)	1 10168501
72.	0.459	BOLT,VLV LFTR GDE RET(*15,16,17,18,19,20,21,23,) (HEX,5/16-18X.635,CLASS 3A,0.492 THD,300M PC,MACH)(8.900)	91 - 93	I (L05)	3 24501365
	0.459	BOLT,VLV LFTR GDE RET(* 17,19,20,21,23,24,27,34,35,37,38,40,41.)(HEX,5/16- 18X.635,CLASS 3A,0.492 THD,300M PC,MACH)(8.900)	96 - 97	I (L05)	3 24501365
	0.459	BOLT,VLV LFTR GDE RET(* 17,19,20,21,23,27,31,32,33,34,36)(HEX,5/16- 18X.635,CLASS 3A,0.492 THD,300M PC,MACH)(8.900)	94 - 95	I (L05)	3 24501365
	0.459	BOLT,VLV LFTR GDE RET(*22,34,41,42,43)(HEX,5/16- 18X.635,CLASS 3A,0.492 THD,300M PC,MACH)(8.900)	98 - 01	I (L31)	3 24501365
	0.459	BOLT,VLV LFTR GDE RET(*41,42,44,46,48,49) (HEX,5/16-18X.635,CLASS 3A,0.492 THD,300M PC,MACH)(8.900)	02 - 04	I (LG9)	3 24501365
73.	1.073	PLUG,W/PMP(* 1,2,3,4,5,6,7,8,10,11,12,13,15,16,17,18,19,20,23,24,25, 26.)(SQ HD 3/4-14 NPT 1.06 LGTH CAST IRON ZC) (8.971)	91 - 93	I (L05)	AR 00143936
	1.073	PLUG,W/PMP(* 1,2,3,5,12,15,17,19,20,21,23,24,25,26,28,29,30,31,32,3 4,36.)(SQ HD 3/4-14 NPT 1.06 LGTH CAST IRON ZC) (8.971)	94 - 95	I (L05)	AR 00143936
	1.073	PLUG,W/PMP(* 1,2,3,5,12,15,17,19,20,21,23,24,25,26,28,29,30,31,32,3 4,36.)(SQ HD FILL & DRN 1/2-14X0.610.) (PLAIN) (8.971)	94 - 95	I (L05)	1 00444746
	1.073	PLUG,W/PMP(* 1,2,3,5,6,7,8,10,11,12,13,15,16,17,18,19,20,23,24,25,26) (SQ HD FILL & DRN 1/2-14X0.610.) (PLAIN)(8.971)	91 - 93	I (L05)	1 00444746
	1.073	PLUG,W/PMP(* 17,19,20,21,23,24,34,35,37,38,39,40,41.)(SQ HD 3/4-14 NPT 1.06 LGTH CAST IRON ZC)(8.971)	96 - 97	I (L05,L31)	AR 00143936
	1.073	PLUG,W/PMP(*34,41,44)(SQ HD 3/4-14 NPT 1.06 LGTH CAST IRON ZC)(8.971)	98 - 01	I (L31)	AR 00143936
	1.073	PLUG,W/PMP(*41,44,46,48,49)(SQ HD 3/4-14 NPT 1.06 LGTH CAST IRON ZC)(8.971)	02 - 04	I (LG9)	AR 00143936
	1.073	PLUG,HTR HOSE NIP HOLE(* 1,2,3,4,5,6,7,8,10,11,12,13,15,16,17,18,19,20,21,23,24, 25,26)(SQ HD FILL & DRN 1/2-14X0.610.) (PLAIN) (8.971)	91 - 93	I (L05)	1 00444746

	1.073	PLUG,HTR HOSE NIP HOLE(* 1,2,3,4,5,6,7,8,9,10,11,12,13,14,15,16,17,18,19,20)(1/2- 14X 39/64,STL,PE)(HEADLESS SQ SOC,USE W/SEALER #1052080)(8.971)(AC-DELCO #25522466)	91 - 93	I (L05)	2	25522466
	1.073	PLUG,HTR HOSE NIP HOLE(* 1,2,3,5,12,14,15,17,19,20,21,22,23,24,25,26,28,29,30,3 1,32,35,36,39,40.)(1/2-14X 39/64,STL,PE)(HEADLESS SQ SOC,USE W/SEALER #1052080)(8.971)(AC- DELCO #25522466)	94 - 96	I (L05)	2	25522466
	1.073	PLUG,HTR HOSE NIP HOLE(* 1,2,3,5,12,15,17,19,20,21,23,24,25,26,28,29,30,31,32,3 4,35,36)(SQ HD FILL & DRN 1/2-14X0.610.) (PLAIN) (8.971)	94 - 95	I (L05)	1	00444746
	1.073	PLUG,HTR HOSE NIP HOLE(* 17,19,20,21,23,24,35,39,40)(SQ HD FILL & DRN 1/2- 14X0.610.) (PLAIN)(8.971)	96 - 97	I (L05)	1	00444746
	1.073	PLUG,HTR HOSE NIP HOLE(*17,21,22,24,31,35,36) (AUTO DRAIN,INT SQ,3/8-18X.42 PEOR STL)(8.971)	94 - 95	I (L05)	1	14090911
	1.073	PLUG,HTR HOSE NIP HOLE(*17,21,22,24,39) (AUTO DRAIN,INT SQ,3/8-18X.42 PEOR STL)(8.971)	96 - 97	I (L05)	1	14090911
	1.073	PLUG,HTR HOSE NIP HOLE(*19,20,23,24,35,39,40) (1/2-14X 39/64,STL,PE)(HEADLESS SQ SOC,USE W/SEALER #1052080)(8.971)(AC-DELCO #25522466)	97	I (L05)	2	25522466
	1.073	PLUG,HTR HOSE NIP HOLE(*34,41,42,43) (1/2-14X 39/64,STL,PE)(HEADLESS SQ SOC,USE W/SEALER # 1052080)(8.971)(AC-DELCO #25522466)	00	I (L31)	1	25522466
	1.073	PLUG,HTR HOSE NIP HOLE(*34,41,42,43,44) (SQ HD FILL & DRN 1/2-14X0.610.) (PLAIN)(8.971)	00 - 01	I (L31)	1	00444746
	1.073	PLUG,HTR HOSE NIP HOLE(*41,42,43,44) (1/2-14X 39/64,STL,PE)(HEADLESS SQ SOC,USE W/SEALER # 1052080)(8.971)(AC-DELCO #25522466)	01	I (L31)	1	25522466
	1.073	PLUG,HTR HOSE NIP HOLE(*41,42,43,44,46,48,49) (1/2-14X 39/64,STL,PE)(HEADLESS SQ SOC,USE W/SEALER #1052080)(8.971)(AC-DELCO #25522466)	02 - 04	I (LG9)	1	25522466
	1.073	PLUG,HTR HOSE NIP HOLE(*41,43,44,46,48,49) (SQ HD FILL & DRN 1/2-14X0.610.) (PLAIN)(8.971)	02 - 04	I (LG9)	1	00444746
74.	1.062	HUB,FAN & W/PMP PUL(* 1,2,3,4,5,6,7,8,10,11,12,13,15,16,17,18,19,20,21,23,24, 25,26,28,29,30,31,32)	91 - 93	I (L05) (OEM-HARDIN & THERMO ELECTRON)	1	00354480
	1.062	HUB,FAN & W/PMP PUL(* 1,2,3,5,15,17,19,20,21,23,24,25,26,28,29,30,31,32,34,3 5,36)	94 - 95	I (L05) (OEM-HARDIN & THERMO ELECTRON)	1	00354480
	1.062	HUB,FAN & W/PMP PUL(* 17,19,20,21,23,24,34,35,37,38,39,40,41)	96 - 97	I (L05,L31) (OEM-HARDIN & THERMO ELECTRON)	1	00354480

	1.062	HUB,FAN & W/PMP PUL(*34,41)	98 - 01	I (L31) (OEM-HARDIN & THERMO ELECTRON)	1	00354480
	1.062	HUB,FAN & W/PMP PUL(*41,44,46,48,49)	02 - 04	I (LG9) (OEM-HARDIN & THERMO ELECTRON)	1	00354480
75.	1.079	GASKET,W/PMP CVR(* 1,2,3,4,5,6,7,8,10,11,12,13,14,15,16,17,18,19,20,21,22, 23,24,25,26,28,29,30,31,32,33,34,35,36.)	91 - 95	I (L05)	1	12555493
	1.079	GASKET,W/PMP CVR(* 14,17,19,20,21,22,23,24,34,35,37,38,39,40,41.)	96 - 97	I (L05,L31)	1	12555493
	1.079	GASKET,W/PMP CVR(*22,34,41,42,43)	98 - 01	I (L31)	1	12555493
	1.079	GASKET,W/PMP CVR(*41,43,44,46,48,49)	02 - 04	I (LG9)	1	12555493
	1.079	GASKET,W/PMP CVR(*9)	91 - 92	I (L05)	1	12555493
76.	8.846	FITTING,HTR HOSE	00 - 04			
	8.846	FITTING,HTR HOSE(*14)	91 - 94	I (L05)	1	10088196
77.	0.459	RETAINER,VLV LFTR GDE(*15,16,17,18,19,20,21,23)(1 PC)(RESTRICTOR)	91 - 93	I (L05)	1	14101116
	0.459	RETAINER,VLV LFTR GDE(* 17,19,20,21,23,27,31,32,33,34,35,36.)(1 PC) (RESTRICTOR)	94 - 95	I (L05)	1	14101116
	0.459	RETAINER,VLV LFTR GDE(* 17,19,20,21,23,27,34,35,37,38,40,41.)(1 PC) (RESTRICTOR)	96 - 97	I (L05,L31)	1	14101116
	0.459	RETAINER,VLV LFTR GDE(*22,34,41,42,43)(1 PC) (RESTRICTOR)	98 - 01	I (L31)	1	14101116
	0.459	RETAINER,VLV LFTR GDE(*41,43,44,46,48,49)(1 PC) (RESTRICTOR)	02 - 04	I (LG9)	1	14101116
78.	1.079	STUD,W/PMP(* 1,2,3,4,5,6,7,8,10,11,12,13,15,16,17,18,19,20,23,24,25, 26)(5/16-24 X 3/8-16 X 2 9/16)(1.073)	91 - 93	I (L05)	RH	03759755
	1.079	STUD,W/PMP(* 1,2,3,5,12,15,17,19,20,21,23,24,25,26,28,29,30,31,32,3 4,35,36)(5/16-24 X 3/8-16 X 2 9/16)(1.073)	94 - 95	I (L05)	RH	03759755
	1.079	STUD,W/PMP(* 17,19,20,21,22,23,24,34,35,37,38,39,40,41.)(5/16-24 X 3/8-16 X 2 9/16)(1.073)	96 - 97	I (L05,L31)	RH	03759755
	1.079	STUD,W/PMP(*22,34,41,43)(5/16-24 X 3/8-16 X 2 9/16) (1.073)	98 - 01	I (L31)	RH	03759755
	1.079	STUD,W/PMP(*41,44,46,48,49)(5/16-24 X 3/8-16 X 2 9/16)(1.073)	02 - 04	I (LG9)	RH	03759755
79.	0.219	INDICATOR,TMG	00 - 04			
	0.219	INDICATOR,TMG(* 1,3,4,5,6,7,8,9,10,12,13,15,16,17,18,19,20.)	91 - 93	I (L05)	1	03991436
	0.219	INDICATOR,TMG(*	94 - 95	I (L05)	1	03991435

		1,3,5,12,15,19,20,23,24,25,28,30,32,34.)			
	0.219	INDICATOR,TMG(*17,21,31,35.)	94	I (L05)	1 03991436
	0.219	INDICATOR,TMG(*36)	95	I (L05)	1 03991436
80.	0.206	BOLT,ENG FRT CVR(8.900)	91 - 94	I (L05)	1 09439930
	0.206	BOLT,ENG FRT CVR(CENTER OF COVER)(* 14,17,19,20,21,22,23,24,34,35,37,38,39,40,41.)(HWH 1/4-20 THD SHLD LEN 29/32)	96 - 97	I (L05,L31)	2 12551135
	0.206	BOLT,ENG FRT CVR(CENTER OF COVER)(* 22,34,41,42,43)(HWH 1/4-20 THD SHLD LEN 29/32)	98 - 01	I (L31)	2 12551135
	0.206	BOLT,ENG FRT CVR(CENTER OF COVER)(* 41,43,44,46,48,49)(HWH 1/4-20 THD SHLD LEN 29/32)	02 - 04	I (LG9)	2 12551135
	0.206	BOLT,ENG FRT CVR(* 1,2,3,5,12,14,15,19,20,22,23,24,25,26,28,29,30,32,34,3 6)(1/4-20 X 1/2,1/8 THD)(300M,PC)(8.900)	95	I (L05)	AR 09442895
	0.206	BOLT,ENG FRT CVR(* 14,17,19,20,21,22,23,24,34,35,37,38,39,40.)(1/4- 20X.025)(HWH)	96 - 97	I (L05,L31)	6 10213293
	0.206	BOLT,ENG FRT CVR(*22,34,41,42,43)(1/4-20X.025) (HWH)	98 - 01	I (L31)	6 10213293
	0.206	BOLT,ENG FRT CVR(*27,33)(8.900)	94 - 97	I (L05)	8 09442397
	0.206	BOLT,ENG FRT CVR(*41,43,44,46,48,49)(1/4-20X.025) (HWH)	02 - 04	I (LG9)	6 10213293
81.	0.206	COVER,ENG FRT(* 1,2,3,5,12,14,15,17,19,20,21,22,23,24,25,26,28,29,30,3 1,32,34,35,36)(W/O POINTER)	94 - 95	I (L05)	1 10046160
	0.206	COVER,ENG FRT(* 14,17,19,20,21,22,23,24,34,35,37,38,39,40,41)(LESS POINTER)	96 - 97	I (L05,L31)	1 12562818
	0.206	COVER,ENG FRT(*14,21,22)	91 - 93	I (L05)	1 12523973
	0.206	COVER,ENG FRT(*2,11,26)(INCLS POINTER-TO BE WELDED TO CVR)(USE ONLY 10181320 POINTER)	91 - 93	I (L05)	1 12513955
	0.206	COVER,ENG FRT(*22,34,41,42,43)(LESS POINTER)	98 - 01	I (L31)	1 12562818
	0.206	COVER,ENG FRT(*41,43,44,46,48,49)(INCLS BOLT/SCREW, GROMMET & INSERT)	02 - 04	I (LG9)	1 12558343
	0.206	COVER,ENG FRT(REQUIRES PTR 3991435)(* 1,3,4,5,6,7,8,9,10,12,13,15,16,17,18,19,20,23,24,25) (LESS POINTER)	91 - 93	I (L05)	1 10243967
82.	0.207	GASKET,ENG FRT CVR	00 - 04		
	0.207	GASKET,ENG FRT CVR	91 - 93	I (L05)	1 10108435
	0.207	GASKET,ENG FRT CVR(* 1,2,3,5,12,14,15,17,19,20,21,22,23,24,25,26,28,29,30,3 1,31,32,34,35,36.)	94 - 95	I (L05)	1 10108435
	0.207	GASKET,ENG FRT CVR(*27,33)	94 - 97	I (L05)	1 10128293

83.	0.480	WASHER,VLV LFTR GDE RET	00 - 04		
	0.480	WASHER,VLV LFTR GDE RET(* 15,16,17,18,19,20,21,23)(5/16X47/64X1/16)(ZC)(8.929)	91 - 93 I (L05)	3	00120386
	0.480	WASHER,VLV LFTR GDE RET(* 17,19,20,21,23,27,32,33,34,35,36.)(5/16X47/64X1/16) (ZC)(8.929)	94 - 95 I (L05)	3	00120386
84.	0.213	SEAL,CR/SHF FRT OIL(* 14,17,19,20,21,22,23,24,34,35,37,38,39,40,41)(58MM O.D.)(W/PART NUMBER STAMPING)	96 - 97 I (L05,L31)	1	10228655
	0.213	SEAL,CR/SHF FRT OIL(*14,22,34,41,42,43)(58MM O.D.) (W/PART NUMBER STAMPING)	98 - 01 I (L31)	1	10228655
	0.213	SEAL,CR/SHF FRT OIL(*2,26,29)	94 - 95 I (L05)	1	10244151
	0.213	SEAL,CR/SHF FRT OIL(*41,43,44,46,48,49)(61.5MM O.D. W/PART NUMBER STAMPING)	02 - 04 I (LG9)	1	10128316
	0.213	SEAL,CR/SHF FRT OIL(TIMING GR CVR(* 1,2,3,5,12,14,15,17,19,20,21,22,23,24,25,28,30,31,32,3 4,35,36.)(61.42/61.32 MM O.D.)	94 I (L05)	1	10243247
	0.213	SEAL,CR/SHF FRT OIL(TIMING GR CVR(* 1,3,4,5,6,7,8,9,10,12,13,14,15,16,17,18,19,20,21,22,23, 24,25.)(61.42/61.32 MM O.D.)	91 - 93 I (L05)	1	10243247
	0.213	SEAL,CR/SHF FRT OIL(TIMING GR CVR(* 1,3,5,12,14,15,19,20,22,24,25,28,30,32,33,34) (61.42/61.32 MM O.D.)	95 I (L05)	1	10243247
85.	0.738	BOLT,CM/SHF SPKT(5/16-18 X 3/4, 300M)(HEX HD, STEEL)(8.900)	91 - 97 I (L05)	3	09424877
	0.738	BOLT,CM/SHF SPKT(5/16-18 X 3/4, 300M)(HEX HD, STEEL)(8.900)	98 - 01 I (L31)	3	09424877
	0.738	BOLT,CM/SHF SPKT(*41,43,44,46,48,49)(5/16-18 X 3/4, 300M)(HEX HD, STEEL)(8.900)	02 - 04 I (LG9)	3	09424877
86.	NS	GEAR,CM/SHF(*KIT1)	I (L05)		
	0.736	SPROCKET,CM/SHF(* 1,3,4,5,6,7,8,9,10,12,13,14,22,24,25,26)(36 TEETH) (.275/.285" TOOTH WIDTH)	91 - 93 I (L05)	1	14088785
	0.736	SPROCKET,CM/SHF(*1,3,5,12,14,15,22,24,25,28,30)(36 TEETH)(.275/.285" TOOTH WIDTH)	94 - 95 I (L05)	1	14088785
	0.736	SPROCKET,CM/SHF(*14,22,39)(36 TEETH)(.275/.285" TOOTH WIDTH)	96 - 97 I (L05)	1	14088785
	0.736	SPROCKET,CM/SHF(*15,16,17,18,19,20,21,23)(36 TEETH)(.395/.405" TOOTH WIDTH)	91 - 93 I (L05)	1	12552128
	0.736	SPROCKET,CM/SHF(* 17,19,20,21,23,24,34,35,36,37,38,40,41.)(36 TEETH)	96 - 97 I (L05,L31)	1	12552129
	0.736	SPROCKET,CM/SHF(*17,24)(36 TEETH)	94 I (L05)	1	12552129
	0.736	SPROCKET,CM/SHF(*19,20,21,23,27,31,32,34,35)(36	94 I (L05) (1ST DES)	1	12552128

		TEETH)(.395/.405" TOOTH WIDTH)				
	0.736	SPROCKET ,CM/SHF(*19,20,21,23,27,31,32,34,35)(36 TEETH)	94	I (L05) (2ND DES)	1	12552129
	0.736	SPROCKET ,CM/SHF(*19,20,23,32,34,36)(36 TEETH)	95	I (L05)	1	12552129
	0.736	SPROCKET ,CM/SHF(*22,34,41,42,43)(36 TEETH)	98 - 01	I (L31)	1	12552129
	0.736	SPROCKET ,CM/SHF(*27,33)	94 - 97	I (L05)	1	10206039
	0.736	SPROCKET ,CM/SHF(*27,33)(0.728)	95	I (L05)	1	10128349
	0.736	SPROCKET ,CM/SHF(*41,43,44,46,48,49)(36 TEETH)	02 - 04	I (LG9)	1	12552129
87.	0.724	CHAIN ,CM/SHF TMG(*1,2,3,4,5,6,7,8,9,10,11,12,13,14,22,24,25,26)(DIM 5.742 36 TEETH,DIM 2.884 18 TEETH)	91 - 93	I (L05)	1	14088783
	0.724	CHAIN ,CM/SHF TMG(*1,2,3,5,12,14,15,17,22,24,25,28,29,30,33)(DIM 5.742 36 TEETH,DIM 2.884 18 TEETH)	94	I (L05)	1	14088783
	0.724	CHAIN ,CM/SHF TMG(*1,3,5,12,14,15,19,20,22,23,24,25,28,30,32,34,36.)(DIM 5.742 36 TEETH,DIM 2.884 18 TEETH)	95	I (L05)	1	14088783
	0.724	CHAIN ,CM/SHF TMG(*15,16,17,18,19,20,21,23)(NON-ROLLER)	91 - 93	I (L05)	1	10128485
	0.724	CHAIN ,CM/SHF TMG(*17,19,20,21,23,24,27,34,35,37,38,40,41.)(DIM 5.742 36 TEETH,DIM 2.884 18 TEETH)	96 - 97	I (L05)	1	14088783
	0.724	CHAIN ,CM/SHF TMG(*19,20,21,23,27,31,32,33,35)(NON-ROLLER)	94	I (L05) (1ST DES)	1	10128485
	0.724	CHAIN ,CM/SHF TMG(*19,20,21,23,27,31,32,34,35)(DIM 5.742 36 TEETH,DIM 2.884 18 TEETH)	94	I (L05) (2ND DES)	1	14088783
	0.724	CHAIN ,CM/SHF TMG(*22,34,41,42,43)(DIM 5.742 36 TEETH,DIM 2.884 18 TEETH)	98 - 01	I (L31)	1	14088783
	0.724	CHAIN ,CM/SHF TMG(*27,33)(NON-ROLLER)	95	I (L05)	1	10128485
	0.724	CHAIN ,CM/SHF TMG(*35)(NON-ROLLER)	96 - 97	I (L05)	1	10128485
	0.724	CHAIN ,CM/SHF TMG(*41,43,44,46,48,49)(DIM 5.742 36 TEETH,DIM 2.884 18 TEETH)	02 - 04	I (LG9)	1	14088783
88.	1.531	PLUG ,ENG BLK OIL GAL(1/2" STEEL EXPANSION PLUG)(8.970)	91 - 97	I (L05,L31)	1	03701638
	1.531	PLUG ,ENG BLK OIL GAL(1/2" STEEL EXPANSION PLUG)(8.970)	98 - 00	I (L31)	1	03701638
89.	0.738	WASHER ,CM/SHF SPKT	02 - 04			
	0.738	WASHER ,CM/SHF SPKT(5/16X5/8X1/16,ZP)(HARDENED)(8.929)	91 - 97	I (L05)	3	02436162
	0.738	WASHER ,CM/SHF SPKT(5/16X5/8X1/16,ZP)(HARDENED)(8.929)	98 - 00	I (L31)	3	02436162
90.	1.531	PLUG ,ENG BLK OIL GAL(OIL RTN HOLE)(*1,2,2,3,4,5,6,7,8,9)(8.153)	91 - 95	I (L05)	AR	03738198

1.531	PLUG ,ENG BLK OIL GAL(OIL RTN HOLE)(* 10,11,12,13,14,15,16,17,18,19)(8.153)	91 - 97 I (L05)	AR 03738198
1.531	PLUG ,ENG BLK OIL GAL(OIL RTN HOLE)(* 20,21,22,23,24,25,26,27,28,29)(8.153)	91 - 97 I (L05)	AR 03738198
1.531	PLUG ,ENG BLK OIL GAL(OIL RTN HOLE)(* 30,31,32,33,34,35,36,37,38,39)(8.153)	91 - 97 I (L05,L31)	AR 03738198
1.531	PLUG ,ENG BLK OIL GAL(OIL RTN HOLE)(*40,41) (8.153)	96 - 97 I (L05,L31)	AR 03738198
1.531	PLUG ,ENG BLK OIL GAL(OIL RTN HOLE)(* 22,34,41,42,43,44)(8.153)	98 - 01 I (L31)	AR 03738198
1.531	PLUG ,ENG BLK OIL GAL(OIL RTN HOLE)(*41,43,44) (8.153)	02 I (LG9)	AR 03738198
1.531	PLUG ,ENG BLK OIL GAL(OIL RTN HOLE)(* 41,42,43,44,46,48,49)(8.153)	03 - 04 I (LG9)	AR 03738198
91. 8.971	PLUG; W/12346004 DRY SEALER , 1/4-18 NPTF(ENG OIL PRESS GA SEN OR IND SW HOLE)(0.034)(AC- DELCO #14084945)	91 - 93 I (L05)	AR 14084945
1.531	PLUG ,ENG OIL PRESS GA SEN OR IND SW HOLE(1/8- 27X3/8 NPTF)(AUTO, HEX HEAD, PIPE PLAIN)(8.971) (AC-DELCO #444613)	94 - 95 I (L05)	AR 00444613
8.971	PLUG ,W/SEALER,1/4-18 NPTF,SQ SOCKET,PL(ENG OIL PRESS GA SEN OR IND SW HOLE)	91 - 97 I (L05,L31)	AR 14081701
8.971	PLUG ,W/SEALER,1/4-18 NPTF,SQ SOCKET,PL(ENG OIL PRESS GA SEN OR IND SW HOLE)	98 - 99 I (L31)	AR 14081701
8.971	PLUG ,W/SEALER,1/4-18 NPTF,SQ SOCKET,PL(ENG OIL PRESS GA SEN OR IND SW HOLE)	00 - 01 I (L31)	AR 14081701
92. 0.685	PIN ,TRANS LOC(TRANS)(5/8 X 1 3/16)(8.939)	91 - 97 I (L05)	2 01453658
0.685	PIN ,TRANS LOC(TRANS)(5/8 X 1 3/16)(8.939)	98 - 01 I (L31)	2 01453658
0.685	PIN ,TRANS LOC(*41,43,44,46,48,49)(TRANS)(5/8 X 1 3/16)(8.939)	02 - 04 I (LG9)	2 01453658
93. 0.673	GEAR ,FLYWHL RING	94 - 97 I (L05,L31)	1 00460583
0.673	GEAR ,FLYWHL RING	98 - 01 I (L31)	1 00460583
0.673	GEAR ,FLYWHL RING	02 - 04 I (LG9)	1 00460583
0.673	GEAR ,FLYWHL RING(* 1,2,3,4,5,6,7,8,10,11,12,13,14,15,16,18,19,30,21,22,23, 24,25,26,27,28,29,30,31,32,33)	91 - 93 I (L05)	1 00460583
0.673	GEAR ,FLYWHL RING(*9,17)(153 TEETH)	91 - 92 I (L05)	1 03991407
94. 0.738	PIN ,CM/SHF GR LOC(1/4X5/8)	91 - 97 I (L05)	2 12554553
0.738	PIN ,CM/SHF GR LOC(1/4X5/8)	98 - 01 I (L31)	2 12554553
0.738	PIN ,CM/SHF GR LOC(*41,43,44,46,48,49)(1/4X5/8)	02 - 04 I (LG9)	2 12554553
95. 0.206	PIN ,ENG FRT CVR LOC(1/4X5/8)(0.738)	91 - 97 I (L05)	2 12554553
0.206	PIN ,ENG FRT CVR LOC(1/4X5/8)(0.738)	98 - 01 I (L31)	2 12554553
0.206	PIN ,ENG FRT CVR LOC(*41,43,44,46,48,49)(1/4X5/8)	02 - 04 I (LG9)	2 12554553

		(0.738)			
96.	0.034	PLUG ,ENG BLK COOL DRN HOLE(*41,43,44,46,48) (USE W/12346004 SEALER;1/4-18X0.56 NPTF DRY SEAL)(1/4-18X0.56)(STEEL)(AC-DELCO #14084945)	02 - 04 I (LG9)	2	14084945
	0.034	PLUG ,ENG BLK COOL DRN HOLE(1/4- 18X0.56,STEEL,PC)(1/4-18X0.56)(STEEL)(AC-DELCO #14084945)	91 - 97 I (L05)	2	14084945
	0.034	PLUG ,ENG BLK COOL DRN HOLE(1/4- 18X0.56,STEEL,PC)(1/4-18X0.56)(STEEL)(AC-DELCO #14084945)	98 - 01 I (L31)	2	14084945
97.	0.034	PLUG ,ENG BLK COOL DRN HOLE(*41,43,44,46,48) (USE W/12346004 SEALER;1/4-18X0.56 NPTF DRY SEAL)(1/4-18X0.56)(STEEL)(AC-DELCO #14084945)	02 - 04 I (LG9)	2	14084945
	0.034	PLUG ,ENG BLK COOL DRN HOLE(1/4- 18X0.56,STEEL,PC)(1/4-18X0.56)(STEEL)(AC-DELCO #14084945)	91 - 97 I (L05)	2	14084945
	0.034	PLUG ,ENG BLK COOL DRN HOLE(1/4- 18X0.56,STEEL,PC)(1/4-18X0.56)(STEEL)(AC-DELCO #14084945)	98 - 01 I (L31)	2	14084945
98.	0.137	SEAL ,CR/SHF RR OIL(PART OF 43)(FREUDENBERG- NOK)	97 I (L05,L31)	1	12554314
	0.137	SEAL ,CR/SHF RR OIL(PART OF 43)(FREUDENBERG- NOK)	98 - 01 I (L31)	1	12554314
	0.137	SEAL ,CR/SHF RR OIL(* 1,3,4,5,6,7,8,9,10,12,13,14,15,16,17,18,19,20,21,22,23, 24,25,27,28,30,31,32,33,34,35,36)(PART OF 43)	91 - 94 I (L05)	1	10088158
	0.137	SEAL ,CR/SHF RR OIL(*2,11,26,29)(PART OF 43) (OPPOSITE ROTATION)	91 - 95 I (L05)	1	14096051
	0.137	SEAL ,CR/SHF RR OIL(*41,43,44,46,48,49)(PART OF 43)(FREUDENBERG-NOK)	02 - 04 I (LG9)	1	12554314
	0.137	SEAL ,CR/SHF RR OIL(NORMAL ROTATION)(PART OF 43)	95 - 96 I (L05)	1	10088158
100.	1.639	DRIVE ,O/PMP	00 - 04		
	1.639	DRIVE ,O/PMP(*27,33)	94 - 97 I (L05)	1	01103868
101.	1.639	BOLT ,O/PMP DRV SHF	00 - 04		
	1.639	BOLT ,O/PMP DRV SHF(*27,33)(5/16-18 X 3/4, 300M) (HEX HD, STEEL)(8.900)	94 - 97 I (L05)	2	09424877
102.	1.652	WASHER ,O/PMP	00 - 04		
	1.652	WASHER ,O/PMP(*27,33)(5/16X5/8X1/16,ZP) (HARDENED)(8.929)	94 - 95 I (L05)	3	02436162
104.	1.079	PIN ,W/PMP LOC	00 - 04		
	1.079	PIN ,W/PMP LOC(*27,33)(DOWEL,5/16X1.25,STL- HRD,PL,CHAM ENDS)	94 - 97 I (L05)	2	10128487

105.	1.105	SHAFT,W/PMP DRV	00 - 04		
	1.105	SHAFT,W/PMP DRV(*27,33)(INCLS BRG)	94 - 97 I (L05)	1	10219554
106.	1.105	BOLT,W/PMP DRV SHF BRG RET	00 - 04		
	1.105	BOLT,W/PMP DRV SHF BRG RET(*27,33)(1/4-20X1/2, 15/32OD)(HEX SOC TORX)(0.529)	94 - 97 I (L05)	2	14093637
107.	1.123	SEAL,W/PMP BRG	00 - 04		
	1.123	SEAL,W/PMP BRG(*27,33)	94 - 97 I (L05)	1	10217886
109.	0.206	PIN,ENG FRT CVR LOC(1/4X5/8)(0.738)	91 - 97 I (L05)	2	12554553
	0.206	PIN,ENG FRT CVR LOC(1/4X5/8)(0.738)	98 - 01 I (L31)	2	12554553
	0.206	PIN,ENG FRT CVR LOC(*41,43,44,46,48,49)(1/4X5/8)(0.738)	02 - 04 I (LG9)	2	12554553
110.	0.207	GASKET,ENG FRT CVR	00 - 04		
	0.207	GASKET,ENG FRT CVR	91 - 93 I (L05)	1	10108435
	0.207	GASKET,ENG FRT CVR(*1,2,3,5,12,14,15,17,19,20,21,22,23,24,25,26,28,29,30,31,31,32,34,35,36.)	94 - 95 I (L05)	1	10108435
	0.207	GASKET,ENG FRT CVR(*27,33)	94 - 97 I (L05)	1	10128293
111.	0.213	SEAL,CR/SHF FRT OIL	00 - 04		
	0.213	SEAL,CR/SHF FRT OIL(*27,33)(61.5MM O.D. W/PART NUMBER STAMPING)	94 - 97 I (L05)	1	10128316
112.	0.206	COVER,ENG FRT	00 - 04		
	0.206	COVER,ENG FRT(*27,33)	94 - 97 I (L05)	1	12551636
113.	0.206	PLUG,ENG FRT CVR HOLE	00 - 04		
	0.206	PLUG,ENG FRT CVR HOLE(*27,33)	94 - 97 I (L05)	1	14097460
114.	1.123	SEAL,W/PMP BRG	00 - 04		
	1.123	SEAL,W/PMP BRG(*27,33)	94 - 97 I (L05)	1	10217886
115.	0.206	BOLT,ENG FRT CVR(*27,33)(8.900)	94 - 97 I (L05)	AR	09442397
116.	1.123	SEAL,W/PMP CVR(O RING)	00 - 04		
	1.123	SEAL,W/PMP CVR(O RING)(*27,33)(1.114)	94 - 97 I (L05)	1	10128329
117.	1.069	PUMP KIT,WAT(*1,2,3,4,5,6,7,8,10,11,12,13,15,16,17,18,19,20,23,24,25,26)(AC-DELCO #251-638)	91 - 93 I (L05)	1	88893280
	1.069	PUMP KIT,WAT(*1,2,3,5,12,15,17,19,20,21,23,24,25,26,28,29,30,31,34,36)(AC-DELCO #251-638)	94 - 95 I (L05)	1	88893280
	1.069	PUMP KIT,WAT(*14,22)(AC-DELCO #251-544)	94 - 97 I (L05)	1	88894341
	1.069	PUMP KIT,WAT(*17,19,20,21,23,24,34,35,37,38,39,40,41.)(AC-DELCO #251-638)	96 - 97 I (L05,L31)	1	88893280
	1.069	PUMP KIT,WAT(*22,42,43)(INCLS BOLT,BRG,CONN,CVR,HSG,HUB,IMP,LABEL,NIPPLE & SEAL)(AC-DELCO #251-579)	98 - 01 I (L31)	1	12532528

	1.069	PUMP KIT,WAT(*27,33)(AC-DELCO #251-537)	94 - 97	I (L05)	1	12529560
	1.069	PUMP KIT,WAT(*34,41.)(AC-DELCO #251-638)	98 - 01	I (L31)	1	88893280
	1.069	PUMP KIT,WAT(*41,44,46,48,49)(AC-DELCO #251-638)	02 - 04	I (LG9)	1	88893280
	1.069	PUMP KIT,WAT(*43)(INCLS BOLT,BRG,CONN,CVR,HSG,HUB,IMP,LABEL,NIPPLE & SEAL)(AC-DELCO #251-579)	02 - 04	I (LG9)	1	12532528
	1.069	PUMP KIT,WAT(INCLS GASKET)(INCLS BOLT,BRG,CONN,CVR,HSG,HUB,IMP,LABEL,NIPPLE & SEAL)(AC-DELCO #251-579)	96	I (L31)	1	12532528
118.	1.150	SENSOR,ENG COOL TEMP	91 - 99			
	1.150	SENSOR,ENG COOL TEMP	00 - 04			
119.	8.800	SEALANT-LOCTITE PIPE-W/TEFLON 50CC TUBE(* 27,33)	94 - 99	I (L05)	AR	12346004
	8.800	SEALANT-LOCTITE PIPE-W/TEFLON 50CC TUBE(* 27,33)	00	I (L05)	AR	12346004
120.	1.079	BOLT,W/PMP(HFH,3/8-16X4,1.12 THD,.75 OD,280M,PC.)(8.900)	94 - 97	I (L05)	AR	09423592
121.	1.079	BOLT,W/PMP(HFH 3/8-16X2.00 280M POR 6174M) (8.900)	94 - 97	I (L05)	AR	09440073
122.	1.105	COUPLING,W/PMP DRV SHF	00 - 04			
	1.105	COUPLING,W/PMP DRV SHF(*27,33)	94 - 95	I (L05)	1	10128334
123.	1.105	SEAL,W/PMP DRV SHF	00 - 04			
	1.105	SEAL,W/PMP DRV SHF(*27,33)	94 - 97	I (L05)	1	12553792
124.	1.246	THERMOSTAT,ENG COOL(W/GSKT)	00 - 04			
	1.246	THERMOSTAT,ENG COOL(W/GSKT)(*27,33 (180 DEG) (AC-DELCO #131-100)	94 - 97	I (L05)	1	12555290
125.	1.252	SEAL,ENG COOL THERM(O RING)	00 - 04			
	1.252	SEAL,ENG COOL THERM(O RING)(*27,33)(AC-DELCO #12551507)	94 - 97	I (L05)	1	12551507
126.	1.073	INLET,W/PMP	00 - 04			
	1.073	INLET,W/PMP(W/THERM HSG & BLEDR SCREW)(* 27,33)	94 - 97	I (L05)	1	10108667
127.	1.035	VALVE,ENG COOL AIR BL	00 - 04			
	1.035	VALVE,ENG COOL AIR BL(*27,33)	94 - 97	I (L05)	1	10070107
128.	1.079	BOLT,W/PMP INL	00 - 04			
	1.079	BOLT,W/PMP INL(*27,33)(M6X1.0X25.0 FLG HD)(8.900)	94 - 97	I (L05)	1	22539278
130.	0.659	HUB,CR/SHF BALR	00 - 04			
	0.659	HUB,CR/SHF BALR(*27)	96 - 97	I (L05,EP2)	1	12553250
	0.659	HUB,CR/SHF BALR(*27,33)	94 - 95	I (L05)	1	12553250
131.	0.662	WASHER,CR/SHF BALR	00 - 04			
	0.662	WASHER,CR/SHF BALR(*27,33)	94 - 97	I (L05)	1	10128306
132.	0.662	BOLT,CR/SHF BALR(7/16-20 X 2 1/4, 300M)(*27,33)	94 - 97	I (L05)	1	09440024

		(8.900)			
133.	1.531	PLUG ,ENG BLK OIL GAL(0.413)	91 - 94 I (L05)	8	12338036
	1.531	PLUG ,ENG BLK OIL GAL(.25-18X.475 FULL THREAD) (8.971)	97 - 00 I (L31)	3	14081701
	1.531	PLUG ,ENG BLK OIL GAL(*41,43,44)(HOLE)(HEX SOC,1/4-18 THD,.69 LEN,1038,PC,DOG PT) (W/SEALANT)(8.971)	02 - 03 I (LG9)	1	12338136
	1.531	PLUG ,ENG BLK OIL GAL(*41,43,44,46,48,49,)(1/4- 18X0.56)(STEEL)(0.034)(AC-DELCO #14084945)	02 - 04 I (LG9)	2	14084945
	1.531	PLUG ,ENG BLK OIL GAL(HOLE)(HEX SOC,1/4-18 THD,.69 LEN,1038,PC,DOG PT)(W/SEALANT)(8.971)	98 - 01 I (L31)	1	12338136
	1.531	PLUG ,ENG BLK OIL GAL(HOLE(RR))(HEX SOC,1/4-18 THD,.69 LEN,1038,PC,DOG PT)(W/SEALANT)(8.971)	91 - 96 I (L05,L31)	1	12338136
	1.531	PLUG ,ENG BLK OIL GAL(OIL PRESS LH RR SI HOLE RR)(*27,33)(1/4-18X0.56)(STEEL)(0.034)(AC-DELCO # 14084945)	94 - 95 I (L05)	2	14084945
	1.531	PLUG ,ENG BLK OIL GAL(OIL PRESS LH RR SI HOLE RR)(*27,33)(1/4-18X0.56,STEEL,PC)(1/4-18X0.56) (STEEL)(0.034)(AC-DELCO #14084945)	94 - 95 I (L05)	2	14084945
135.	1.840	ADAPTER ,OIL FLTR	00 - 04		
	1.840	ADAPTER ,OIL FLTR(*27,33)(INCLS ADAP,PLUG,SPR&VLV)	94 - 97 I (L05)	1	03952301
136.	1.840	BOLT ,OIL FLTR ADAP	00 - 04		
	1.840	BOLT ,OIL FLTR ADAP(*27,33)(5/16 - 18 X 1 1/8)(8.900)	94 - 97 I (L05)	AR	03951644
137.	1.836	FILTER ,OIL	00 - 04		
	1.836	FILTER ,OIL(76MM LONG)(AC-DELCO #PF454)	94 - 97 I (L05)	1	25324052
	1.836	FILTER ,OIL(AC-DELCO #SPF25)	94 - 97 I (L05)	1	25325405
139.	0.662	BOLT ,CR/SHF BALR(HFH,7/16X.88,.70 THD,.86 OD,300M,PC)(*27,33)(8.900)	94 - 97 I (L05)	3	09442448

SERVICE KITS

1.	0.736	GEAR KIT ,CM/SHF & CR/SHF(INCL 60,86)	00 - 04		
	0.736	GEAR KIT ,CM/SHF & CR/SHF(* 2,11)(INCL 60,86) (0.728)	91 - 93 I (L05) 5.7L O.E.M MARINE(OPP ROT)	1	14091440
	0.736	GEAR KIT ,CM/SHF & CR/SHF(* 2,26,29)(INCL 60,86) (0.728)	94 - 95 I (L05) 5.7L O.E.M MARINE(OPP ROT)	1	14091440

NOTE 01: 5.7L 350 CID MARINE ENG. 1991 14096873 (1AN); 1992 14097408 (2AN); 1993 14097342 (3AN),1994 12550200 (4AN),1995 12550481 (5AN).

NOTE 02: 5.7L 350 CID MARINE ENG. 1991 14096874 (1AR); 1992 14097410 (2AR); 1993 14097344 (3AR), 1994 12550201 (4AR), 1995 12550482 (5AR).

NOTE 03: 5.7L 350 CID MARINE ENG. 1991 14096876 (1AB); 1992 14097412 (2AB); 1993 14097341 (3AB), 1994 12550196 (4AB), 1995 12550477 (5AB).

NOTE 04: 5.7L 350 CID MARINE ENG. 1991 14096878 (1AP); 1993 10228451 (3AP).

NOTE 05: 5.7L 350 CID MARINE ENG. 1991 14096879 (1AS); 1992 14097426 (2AS); 1993 14097338 (3AS), 1994 12550198 (4AS), 1995 12550479 (5AS).

NOTE 06: 5.7L 350 CID MARINE ENG. 1991 14096880 (1AT); 1992 14097427 (2AT).

NOTE 07: 5.7L 350 CID MARINE ENG. 1991 14096882 (1AK), 1992 14097428 (2AK), 1993 14097346 (3AK).

NOTE 08: 5.7L 350 CID MARINE ENG. 1991 14096883 (1AX), 1992 14097429 (2AX), 1993 10228452 (3AX).

NOTE 09: 5.7L 350 CID INDUSTRIAL ENG. 1991 14096885 (1AU), 1992 14097455 (2AU).

NOTE 10: 5.7L 350 CID MARINE ENG. 1991 14097182 (1MN), 1992 14097409 (2MN), 1993 14097343 (3MN).

NOTE 11: 5.7L 350 CID MARINE ENG. 1991 14097183 (1MR), 1992 14097411 (2MR), 1993 14097345 (3MR).

NOTE 12: 5.7L 350 CID MARINE ENG. 1991 14097184 (1MB), 1992 14097413 (2MB), 1993 14097340 (3MB), 1994 12550197 (4MB), 1995 12550478 (5MB).

NOTE 13: 5.7L 350 CID MARINE ENG. 1991 14097185 (1MS), 1992 14097414 (2MS).

NOTE 14: 5.7L 350 CID IRRIGATION ENG. 1991 14097255 (1AF), 1992 14097423 (2AF), 1993 14097353 (3AF), 1994 12550209 (4AF), 1995 12550490 (5AF), 1996 12550517 (6AF), 1997 12555436 (7AF)

NOTE 15: 5.7L 350 CID MARINE ENG. 1991 14097358 (1AY), 1992 14097417 (2AY), 1994 12550199 (4AY), 1995 12550480 (5AY).

NOTE 16: 5.7L 350 CID MARINE ENG. 1991 14097359 (1AZ); 1992 14097418 (2AZ).

NOTE 17: 5.7L 350 CID MARINE ENG. 1991 14097360 (1CA); 1992 14097419 (2CA); 1993 14097351 (3CA), 1994 12550208 (4CA), 1996 12555312 (6CA), 1997 12555306 (7CA)

NOTE 18: 5.7L 350 CID MARINE ENG. 1991 14097378 (1CC).

NOTE 19: 5.7L 350 CID MARINE ENG. 1991 14097379 (1CD); 1992 14097415 (2CD); 1993 14097347 (3CD), 1994 12550204 (4CD), 1995 12550485 (5CD), 1996 12550512 (6CD), 1997 12555303 (7CD)

NOTE 20: 5.7L 350 CID MARINE ENG. 1991 14097380 (1CF), 1992 14097416 (2CF); 1993 14097349 (2CF), 1994 12550206 (4CF), 1995 12550487 (5CF), 1996 12550514 (6CF), 1997 12555305 (7CF)

NOTE 21: 5.7L 350 CID MARINE ENG. 1992 14097471 (2CB); 1993 14097350 (3CB), 1994 12550207 (4CB), 1996 12555311 (6CB), 1997 12555307 (7CB)

NOTE 22: 5.7L 350 CID INDUSTRIAL ENG. 1992 14097421 (2AH), 1993 14097352 (3AH), 1994 12550210 (4AH), 1995 12550491 (5AH), 1996 12550518 (6AH), 1997 12555437 (7AH), 1998 12558792 (8AH)

NOTE 23: 5.7L 350 CID MARINE ENG. 1992 14097424 (2MD); 1993 14097348 (3MD), 1994 12550205 (4MD), 1995 12550486 (5MD), 1996 12550513 (6MD), 1997 12555304 (7MD)

NOTE 24: 5.7L 350 CID MARINE ENG. 1992 14097430 (2AJ); 1993 14097337 (3AJ), 1994 12550195 (4AJ), 1995 12550476 (5AJ), 1996 12550505 (6AJ), 1997 12555302 (7AJ)

NOTE 25: 5.7L 350 CID MARINE ENG. 1992 14097488 (2NN); 1993 14097354 (3NN), 1994 12550202 (4NN), 1995 12550483 (5NN).

NOTE 26: 5.7L 350 CID MARINE ENG. 1992 14097489 (2NR); 1993 14097355 (3NR), 1994 12550203 (4NR), 1995 12550484 (5NR).

NOTE 27: 5.7L 350 CID MARINE ENG. 1994 12550274 (4NT), 1995 12550493 (5NT), 1996 12550520 (6NT), 1997 12555435 (7NT).

NOTE 28: 5.7L 350 CID MARINE ENG. 1994 12550404 (4BN), 1995 12550494 (5BN).

NOTE 29: 5.7L 350 CID MARINE ENG 1994 12550405 (4BR),1995 12550495 (5BR).

NOTE 30: 5.7L 350 CID MARINE ENG 1944 12550406 (4BY),1995 12550496 (5BY).

NOTE 31: 5.7L 350 CID MARINE ENG 1994 12550407 (4BA).

NOTE 32: 5.7L 350 CID MARINE ENG 1994 12550408 (4BF),1995 12550498 (5BF).

NOTE 33: 5.7L 350 CID MARINE ENG 1994 12550273 (4NS),1995 12550492 (5NS).

NOTE 34: 5.7L 350 CID MARINE ENG. 1994 12552652 (4MH),1995 12552653 (5MH),1996 12554997(6MH),1997 12555176 (7MH),1998 12558291 (8MH),1999 12558293 (9MH),2000 12560014 (OM

NOTE 35: 5.7L 350 CID MARINE ENG. 1994 12551687 (4CY), ,1996 12555301 (6CY),1997 12555314 (7CY

NOTE 36: 5.7L 350 CID MARINE ENG. 1995 12553266 (5CH).

NOTE 37: 5.7L 350 CID MARINE ENG. 1996 12554998 (6CJ),1997 12555177 (7CJ

NOTE 38: 5.7L 350 CID MARINE ENG. 1996 12554999 (6CK),1997 12555178 (7CK

NOTE 39: 5.7L 350 CID MARINE ENG. 1996 12555299 (6MJ),1997 12555308 (7MJ

NOTE 40: 5.7L 350 CID MARINE ENG. 1996 12555300 (6MM),1997 12555313 (7MM

NOTE 41: 5.7L 350 CID MARINE ENG. ,1997 12557780(7MK),1998 12558292(8MK),1999 12558294(9MK),2000 12560015(0MK),2001 12562105 (1MK),2002 12562110 (2MK),0000 12572193 (3PC)LI

NOTE 42: 5.7L 350 CID IRRIGATION ENG.1998 12558791 (8AF),1999 12558293 (9AF),2000 12560017 (OAF),2001 12562106 (1AF),0000 93439922 (3AF)-->(N/U)

NOTE 43: 5.7L 350 CID INDUSTRIAL ENG.1999 12558794 (9AH),2000 12560018 (OAH),2001 12562107 (1AH),2002 12562112 (2AH),0000 12572194 (3PD)->(N/U),2003 93439923(3AH),2004 93430333

NOTE 44: 5.7L 350 CID MARINE ENG. 2001 12562104(1MH),2002 12562109 (2MH),0000 12572190 (3PB)->(N/U),2003 93439917 (3MH),2004 93440328 (4MH),

NOTE 46: 5.7L 350 CID MARINE ENG. 0000 12572193 (3PC)->(N/U),2003 93439918 (3MK),2004 93440329 (4MK)

NOTE 48: 5.7L 350 CID MARINE ENG. 2003 93439921 (3ML),2004 93440332 (4ML)

NOTE 49: 5.7L 350 CID MARINE ENG. 2003 93439920 (3MN),2004 93440331 (4MN)

RPO DEFINITIONS

EP2 - MARINE(EP2)

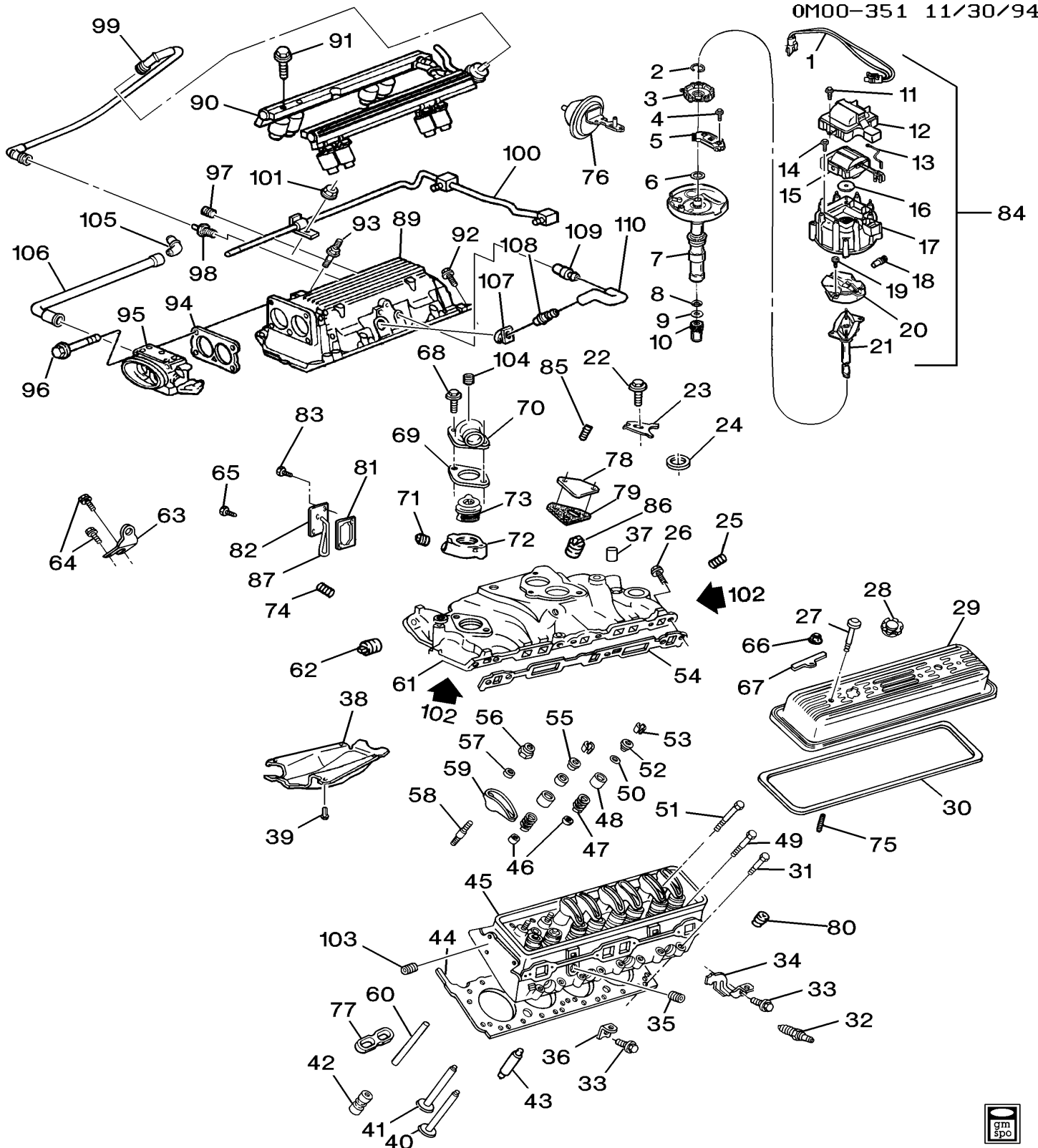
LG9 - ENGINE,350 C.I.D.(5.7D),V8,OEM DIRECT SALES(MARINE)

L05 - ENGINE,5.7L(5.7-7)GAS 8 CYLINDER

L31 - ENGINE,GAS,8 CYL,5.7L,CPI

MW3 - TRANSMISSION,MANUAL,5 SPEED,NEW VENTURE GEAR,109MM,5.61 1ST,O/D

M50 - TRANSMISSION,MANUAL,5 SPEED,NVG,85 MM,3.49 1ST,O/D



OM00-351

1991-2001 I ENGINE ASM-5.7L V8 PART 2 (350 CID/5.7L), 2002-2004 I ENGINE ASM-5.7L V8 PART 2 (350 CID/5.7L)(5.7D)

1. 2.383 HARNESS,DISTR WRG

00 - 04

2.383 HARNESS,DISTR WRG(INCLUDES CAPACITOR)*

91 - 93 I (L05)

1 01892261

		9,14,22)(AC-DELCO #1892261)			
	2.383	HARNESS ,DISTR WRG(INCLUDES CAPACITOR)(* 14,22)(AC-DELCO #1892261)	94 - 97	I (L05)	1 01892261
2.	2.372	RETAINER ,DISTR POLE PIECE	00 - 04		
	2.372	RETAINER ,DISTR POLE PIECE(*14,22)(AC-DELCO # 1892222)	94 - 97	I (L05)	1 01892222
	2.372	RETAINER ,DISTR POLE PIECE(*9,14,22)(AC-DELCO # 1892222)	91 - 93	I (L05)	1 01892222
3.	2.372	POLE PIECE ,DISTR PICK UP	00 - 04		
	2.372	POLE PIECE ,DISTR PICK UP(* 1,3,5,12,15,19,20,23,24,25,26,28,30,32,34)(AC-DELCO #10469667)	94 - 95	I (L05)	1 10469667
	2.372	POLE PIECE ,DISTR PICK UP(*14,22)(AC-DELCO #D1907)	94 - 97	I (L05)	1 01875981
	2.372	POLE PIECE ,DISTR PICK UP(*28,29,30,31,32)(AC- DELCO #10469667)	94 - 95	I (L05)	1 10469667
	2.372	POLE PIECE ,DISTR PICK UP(*9,14,22)(AC-DELCO #D1907)	91 - 93	I (L05)	1 01875981
4.	2.363	BOLT ,DISTR	00 - 04		
	2.363	BOLT ,DISTR(*14,22),(,5.1),ZP,TAP)(HEX W/EXTERNAL TOOTH LOCK WASHER,6-32UNC-2AX.75,.25 OD,GM275M)(2.383)(AC-DELCO #1891234)	96 - 97	I (L05)	1 01891234
	2.363	BOLT ,DISTR(*34,41)(ALSO USE 12346004 SEALER) (8.900)	98 - 99	I (L31)	1 09440901
	2.363	BOLT ,DISTR(*9,14,22),(,5.1),ZP,TAP)(HEX W/EXTERNAL TOOTH LOCK WASHER,6-32UNC- 2AX.75,.25 OD,GM275M)(2.383)(AC-DELCO #1891234)	91 - 95	I (L05)	1 01891234
5.	2.383	MODULE ,DISTR IGN CONT	00 - 04		
	2.383	MODULE ,DISTR IGN CONT(* 1,3,5,12,15,19,20,23,24,25,26,28,30,32,34)(AC-DELCO #D1965A)	94 - 95	I (L05)	1 10482830
	2.383	MODULE ,DISTR IGN CONT(*28,29,30,31,32.)(AC- DELCO #D1965A)	94 - 95	I (L05)	1 10482830
	2.383	MODULE ,DISTR IGN CONT(*9,14,22)(AC-DELCO #D1906)	91 - 97	I (L05)	1 10482820
6.	2.363	SEAL ,DISTR HSG OIL(O RING)	00 - 04		
	2.363	SEAL ,DISTR HSG OIL(O RING)(*9,14,22)(AC-DELCO # 1950569)	91 - 97	I (L05)	1 01950569
7.	2.362	HOUSING ,DISTR	00 - 04		
	2.362	HOUSING ,DISTR(PART OF 84)(* 1,2,15,17,28,29,30,31,32)(AC-DELCO #10470804)	94 - 95	I (L05)	1 10470804
	2.362	HOUSING ,DISTR(PART OF 84)(*28,29,30,32)(AC- DELCO #10470804)	96 - 97	I (L05)	1 10470804

	2.362	HOUSING ,DISTR(PART OF 84)(*9,14,22)(AC-DELCO # 1876222)	91 - 97 I (L05)	1	01876222
8.	2.379	WASHER ,DISTR SHF THR SPR	00 - 04		
	2.379	WASHER ,DISTR SHF THR SPR(*9,14,22)(AC-DELCO # 1965864)	91 - 97 I (L05)	1	01965864
9.	2.379	WASHER ,DISTR SHF(PART OF 84)(*9,14,22)(AC-DELCO #1837617)	91 - 93 I (L05)	1	01837617
	2.379	WASHER ,DISTR SHF(PART OF 84)(*14,22)(AC-DELCO #1837617)	94 - 97 I (L05)	1	01837617
10.	2.374	GEAR ,DISTR SHF	00 - 04		
	2.374	GEAR ,DISTR SHF(* 1,3,5,12,15,19,20,23,24,25,26,28,30,32,34)(AC-DELCO #19052845)	94 - 95 I (L05)	1	19052845
	2.374	GEAR ,DISTR SHF(*14,22)(HARDENED GEAR FOR STEEL CAMSHAFT)(AC-DELCO #10456413)	97 I (L05)	1	10456413
	2.374	GEAR ,DISTR SHF(*17,19,20,21,23,24,35,39,40)(AC-DELCO #19052845)	96 I (L05)	1	19052845
	2.374	GEAR ,DISTR SHF(*28,29,30,31,32)(AC-DELCO # 19052845)	94 - 95 I (L05)	1	19052845
	2.374	GEAR ,DISTR SHF(*34,37,38)(AC-DELCO #10493532)	96 I (L31)	1	10493532
	2.374	GEAR ,DISTR SHF(*9,14,22)(AC-DELCO #1958599)	91 - 97 I (L05)	1	01958599
11.	2.368	BOLT ,DISTR CAP	00 - 01		
	2.368	BOLT ,DISTR CAP(* 1,3,5,12,15,19,20,23,24,25,26,28,30,32,34)(AC-DELCO #10469669)	94 - 95 I (L05)	1	10469669
	2.368	BOLT ,DISTR CAP(*14,22)(HEX,8-18X.50, .328 OD)(AC-DELCO #1876153)	96 - 97 I (L05)	2	01876153
	2.368	BOLT ,DISTR CAP(*28,29,30,31)(AC-DELCO # 10469669)	94 - 95 I (L05)	2	10469669
	2.368	BOLT ,DISTR CAP(*32)(AC-DELCO #10469669)	95 I (L05)	2	10469669
	2.368	BOLT ,DISTR CAP(*41,43,44)(10457666-IS USED TO SERVICE 10475922-ONLY WHEN PART CANNOT OBTAIN PROPER TORQUE)(W/SCOTCH GRIP) (OVERSIZED)(AC-DELCO #10457666)	02 I (LG9)	2	10457666
	2.368	BOLT ,DISTR CAP(*41,43,46)(M4X1X13.4,12.6 THD,9.2 OD,410 STAINLESS STL,GM1000M,TORQ,MACH)(AC-DELCO #10475922)	02 I (LG9)	2	10475922
	2.368	BOLT ,DISTR CAP(*44,46)(M4X1X13.4,12.6 THD,9.2 OD,410 STAINLESS STL,GM1000M,TORQ,MACH)(AC-DELCO #10475922)	03 - 04 I (LG9)	2	10475922
	2.368	BOLT ,DISTR CAP(*44,46)(10457666-IS USED TO SERVICE 10475922-ONLY WHEN PART CANNOT OBTAIN PROPER TORQUE)(W/SCOTCH GRIP)	03 - 04 I (LG9)	2	10457666

		(OVERSIZED)(AC-DELCO #10457666)			
	2.368	BOLT,DISTR CAP(*9,14,22)(HEX,8-18X.50, .328 OD) (AC-DELCO #1876153)	91 - 95	I (L05)	2 01876153
12.	2.362	COVER,IGN DISTR	00 - 04		
	2.362	COVER,IGN DISTR(*9,14,22)(2.368)(AC-DELCO # 1875960)	91 - 97	I (L05)	1 01875960
13.	2.183	STRAP,DISTR COIL GND	00 - 04		
	2.183	STRAP,DISTR COIL GND(*9,14,22)(2.400)(AC-DELCO #1894868)	91 - 97	I (L05)	1 01894868
14.	2.183	BOLT,IGN COIL	00 - 04		
	2.183	BOLT,IGN COIL(*9,14,22)(HFH,8-18X1.050,.61 THD,.38 OD GM 6010-M STL,PC,TAP)(AC-DELCO #1985472)	91 - 97	I (L05)	1 01985472
15.	2.170	COIL,DISTR	00 - 04		
	2.170	COIL,DISTR(*28,29,30,31,32)(2.372)(AC-DELCO #D1944A)	94 - 95	I (L05)	1 10470794
	2.170	COIL,DISTR(*9,14,22)(AC-DELCO #D504A)	91 - 97	I (L05)	1 12498335
16.	2.367	SEAL,DISTR COIL CAP	00 - 04		
	2.367	SEAL,DISTR COIL CAP(*9,14,22)(2.183)(AC-DELCO # 1875962)	91 - 97	I (L05)	1 01875962
17.	2.367	CAP,DISTR	00 - 01		
	2.367	CAP,DISTR(* 1,3,5,12,15,17,19,20,21,23,24,25,26,28,29,30,31,34) (AC-DELCO #D303A)	94	I (L05)	1 10477841
	2.367	CAP,DISTR(* 1,3,5,12,15,19,20,23,24,25,26,28,30,32,34)(AC-DELCO #D303A)	94 - 95	I (L05)	1 10477841
	2.367	CAP,DISTR(*28,29,30,31,32)(AC-DELCO #D303A)	94 - 95	I (L05)	1 10477841
	2.367	CAP,DISTR(*34,37,38)(AC-DELCO #D303A)	96	I (L31)	1 10477841
	2.367	CAP,DISTR(*34,37,41)(AC-DELCO #D303A)	97	I (L31)	1 10477841
	2.367	CAP,DISTR(*34,41)(AC-DELCO #D303A)	98 - 99	I (L31)	1 10477841
	2.367	CAP,DISTR(*41,43,44)(AC-DELCO #D329A)	02	I (LG9)	1 10452459
	2.367	CAP,DISTR(*44,46)(AC-DELCO #D329A)	03 - 04	I (LG9)	1 10452459
	2.367	CAP,DISTR(*9,14,22)(AC-DELCO #D336)	91 - 97	I (L05)	1 01974408
18.	2.368	BRUSH,DISTR CAP	00 - 04		
	2.368	BRUSH,DISTR CAP(*9,14,22)(AC-DELCO #1989880)	91 - 97	I (L05)	1 01989880
19.	2.383	BOLT,DISTR ROT	00 - 01		
	2.383	BOLT,DISTR ROT(*14,22)(AC-DELCO #1979765)	96 - 97	I (L05)	1 01979765
	2.383	BOLT,DISTR ROT(*41,43,44)(AC-DELCO #10475924)	02	I (LG9)	2 10475924
	2.383	BOLT,DISTR ROT(*44,46)(AC-DELCO #10475924)	03 - 04	I (LG9)	2 10475924
	2.383	BOLT,DISTR ROT(*9,14,22)(AC-DELCO #1979765)	91 - 95	I (L05)	1 01979765
20.	2.382	ROTOR,DISTR	00 - 01		
	2.382	ROTOR,DISTR(*	94 - 95	I (L05)	1 10477219

		1,3,5,12,15,19,20,23,24,25,26,28,30,32,34)(2.362)(AC-DELCO #D461)			
	2.382	ROTOR,DISTR(*28,29,30,31,32)(2.362)(AC-DELCO #D461)	94 - 95	I (L05)	1 10477219
	2.382	ROTOR,DISTR(*41,43,44)(AC-DELCO #D465)	02	I (LG9)	1 10452457
	2.382	ROTOR,DISTR(*44,46)(AC-DELCO #D465)	03 - 04	I (LG9)	1 10452457
	2.382	ROTOR,DISTR(*9,14,22)(AC-DELCO #D448)	91 - 97	I (L05)	1 10498150
21.	2.372	SHAFT,DISTR	00 - 04		
	2.372	SHAFT,DISTR(*1,3,5,12,15,19,20,23,24,25,26,28,30,32,34)(AC-DELCO #10491354)	94 - 95	I (L05)	1 10491354
	2.372	SHAFT,DISTR(*28,29,30,31,32)(AC-DELCO #10491354)	94 - 95	I (L05)	1 10491354
	2.372	SHAFT,DISTR(*9,14,22)(AC-DELCO #1894379)	91 - 97	I (L05)	1 01894379
22.	2.363	BOLT,DISTR CLA	00 - 04		
	2.363	BOLT,DISTR CLA(*14,17,19,20,21,22,23,24,35,39,40)(ALSO USE 12346004 SEALER)(8.900)	96	I (L05)	1 09440901
	2.363	BOLT,DISTR CLA(*14,27)(ALSO USE 12346004 SEALER)(8.900)	97	I (L05)	1 09440901
	2.363	BOLT,DISTR CLA(*34,37,38)(ALSO USE 12346004 SEALER)(8.900)	96	I (L31)	1 09440901
	2.363	BOLT,DISTR CLA(*34,37,41)(ALSO USE 12346004 SEALER)(8.900)	97	I (L31)	1 09440901
	2.363	BOLT,DISTR CLA(ALSO USE 12346004 SEALER)(8.900)	91 - 95	I (L05)	1 09440901
23.	2.363	CLAMP,DISTR(*21,22,23,24,25,26,28,29,30,31)	91 - 93	I (L05)	1 10096197
	2.363	CLAMP,DISTR(*32,33,34,35,36)	94 - 97	I (L05)	1 10096197
	2.363	CLAMP,DISTR(*34,41)	98 - 99	I (L31)	1 10096197
24.	2.363	GASKET,DISTR	00 - 01		
	2.363	GASKET,DISTR(*14,22)(AC-DELCO #10108445)	96 - 97	I (L05)	1 10108445
	2.363	GASKET,DISTR(*14,22,28,29,30,31,32)(AC-DELCO #10108445)	94 - 95	I (L05)	1 10108445
	2.363	GASKET,DISTR(*34,41)(AC-DELCO #10108445)	98 - 99	I (L31)	1 10108445
	2.363	GASKET,DISTR(*41,43)(AC-DELCO #10108445)	02	I (LG9)	1 10108445
	2.363	GASKET,DISTR(*41,43,44)(AC-DELCO #10108445)	02	I (LG9)	1 10108445
	2.363	GASKET,DISTR(*44,46)(AC-DELCO #10108445)	03 - 04	I (LG9)	1 10108445
	2.363	GASKET,DISTR(*9,14,22)(AC-DELCO #10108445)	91 - 93	I (L05)	1 10108445
25.	8.971	PLUG,SQ SOCKET,3/8-18,BRASS(EGR VLV THERMAL VAC VLV HOLE)(*22,24,39)(AC-DELCO #444662)	92 - 97	I (L05)	AR 00444662
	8.971	PLUG,SQ SOCKET,3/8-18,BRASS(CYL HD CORE HOLE)(*34,41)(AC-DELCO #444662)	98 - 99	I (L31)	AR 00444662
26.	3.275	BOLT,INT MANIF(*	94 - 95	I (L05)	3 88891769

		1,2,3,5,12,14,15,17,19,20,21,22,23,24,25,26,28,29,30,3 1,32,34,35,36)(7.006)			
	3.275	BOLT,INT MANIF(*14,17,19,20,21,22,23,24,38,39,40) (ALSO USE 12346004 SEALER)(8.900)	96 - 97	I (L05)	AR 09440901
	3.275	BOLT,INT MANIF(*14,17,19,20,21,22,23,24,35,36,39,40) (7.006)	96 - 97	I (L05,L31)	3 88891769
	3.275	BOLT,INT MANIF(*17,21,31,35)(ALSO USE 12346004 SEALER)(8.900)	94	I (L05)	AR 09440901
	3.275	BOLT,INT MANIF(*27)(M6 X 1 X 12)(HFH, 9.8 PE, 12.8 OD DR)(8.900)(AC-DELCO #11514149)	96 - 97	I (L31)	4 11514149
	3.275	BOLT,INT MANIF(*27,33)(3/8-16X1.38,280M)(HFH, PZOR)(8.900)	94 - 97	I (L05)	8 09439918
	3.275	BOLT,INT MANIF(*27,34,38)(M6 X 1 X 12)(HFH, 9.8 PE, 12.8 OD DR)(8.900)(AC-DELCO #11514149)	96	I (L31)	4 11514149
	3.275	BOLT,INT MANIF(*34,41)(M6 X 1 X 12)(HFH, 9.8 PE, 12.8 OD DR)(8.900)(AC-DELCO #11514149)	97 - 99	I (L31)	4 11514149
	3.275	BOLT,INT MANIF(*34,41,44)(5/16-18X1.75,280M)	97 - 00	I (L31)	8 12550027
	3.275	BOLT,INT MANIF(*36)(ALSO USE 12346004 SEALER) (8.900)	95	I (L05)	AR 09440901
	3.275	BOLT,INT MANIF(*41,43,44,46,48,49)(M6 X 1 X 12) (HFH, 9.8 PE, 12.8 OD DR)(8.900)(AC-DELCO # 11514149)	02 - 04	I (LG9)	4 11514149
	3.275	BOLT,INT MANIF(*9,17,21)(ALSO USE 12346004 SEALER)(8.900)	91 - 93	I (L05)	AR 09440901
27.	0.413	BOLT,VLV RKR ARM CVR(* 1,2,3,4,5,6,10,11,12,13,14,15,16,18,19,20,22,23,24,25,2 6)(AT WASH)(HEX WA HEAD 1/4-20X3.42,.8 THD.5 OD,280 MAT,7111M,MACH,FLG)	91 - 93	I (L05)	8 12338092
	0.413	BOLT,VLV RKR ARM CVR(* 1,2,3,5,12,14,15,19,20,22,23,24,25,26,28,29,30,32,34,3 6)(AT WASH)(HEX WA HEAD 1/4-20X3.42,.8 THD.5 OD,280 MAT,7111M,MACH,FLG)	95	I (L05)	8 12338092
	0.413	BOLT,VLV RKR ARM CVR(* 1,2,3,5,12,14,17,19,20,21,22,23,24,25,26,28,29,31,32,3 4,35)(AT WASH)(HEX WA HEAD 1/4-20X3.42,.8 THD.5 OD,280 MAT,7111M,MACH,FLG)	94	I (L05)	8 12338092
	0.413	BOLT,VLV RKR ARM CVR(* 14,17,19,20,21,22,23,24,34,38,39,40.)(AT WASH)(HEX WA HEAD 1/4-20X3.42,.8 THD.5 OD,280 MAT,7111M,MACH,FLG)	96 - 97	I (L05,L31)	8 12338092
	0.413	BOLT,VLV RKR ARM CVR(*15,27,30,33,35)	94	I (L05)	8 10108675
	0.413	BOLT,VLV RKR ARM CVR(*17)(AT WASH)(HEX WA HEAD 1/4-20X3.42,.8 THD.5 OD,280	91 - 92	I (L05)	8 12338092

		MAT,7111M,MACH,FLG)				
	0.413	BOLT,VLV RKR ARM CVR(*22,34,41,42,43)(AT WASH) (HEX WA HEAD 1/4-20X3.42,.8 THD.5 OD,280 MAT,7111M,MACH,FLG)	98 - 01	I (L31)	8	12338092
	0.413	BOLT,VLV RKR ARM CVR(*27,33)	95	I (L05)	8	10108675
	0.413	BOLT,VLV RKR ARM CVR(*27,35,37)	96 - 97	I (L05)	8	10108675
	0.413	BOLT,VLV RKR ARM CVR(*31)(1/4X20X88)	94	I (L05)	8	10088165
	0.413	BOLT,VLV RKR ARM CVR(*41,43,44,46,48,49)(AT WASH)(HEX WA HEAD 1/4-20X3.42,.8 THD.5 OD,280 MAT,7111M,MACH,FLG)	02 - 04	I (LG9)	8	12338092
	0.413	BOLT,VLV RKR ARM CVR(*7,17,21)	93	I (L05)	8	10108675
	0.413	BOLT,VLV RKR ARM CVR(*7,8,21)(1/4X20X88)	91 - 92	I (L05)	8	10088165
28.	1.758	CAP,OIL FIL(* 1,2,3,4,5,6,7,8,9,10,11,12,13,18,19,20,21,22,23,24,25,2 6)(97.5 MM TUBE W/THREADED CAP)(AC-DELCO #FC212)	91 - 92	I (L05)	1	93439687
	1.758	CAP,OIL FIL(* 1,2,3,4,5,8,10,11,12,17,18,19,20,22,23,24,25,26)(97.5 MM TUBE W/THREADED CAP)(AC-DELCO #FC212)	93	I (L05)	1	93439687
	1.758	CAP,OIL FIL(* 1,2,3,5,12,14,15,17,19,20,21,22,23,24,25,26,28,29,31,3 2,34)(97.5 MM TUBE W/THREADED CAP)(AC-DELCO #FC212)	94	I (L05)	1	93439687
	1.758	CAP,OIL FIL(* 1,2,3,5,12,14,15,19,20,22,23,24,25,26,28,29,30,32,34,3 6)(97.5 MM TUBE W/THREADED CAP)(AC-DELCO #FC212)	95	I (L05)	1	93439687
	1.758	CAP,OIL FIL(*14,17,19,20,21,22,23,24,34,38,39,40.) (97.5 MM TUBE W/THREADED CAP)(AC-DELCO #FC212)	96	I (L05,L31)	1	93439687
	1.758	CAP,OIL FIL(*14,17,19,20,21,22,23,34,39,41)(97.5 MM TUBE W/THREADED CAP)(AC-DELCO #FC212)	97	I (L05,L31)	1	93439687
	1.758	CAP,OIL FIL(*15,16,17)(97.5 MM TUBE W/THREADED CAP)(AC-DELCO #FC212)	91 - 92	I (L05)	1	93439687
	1.758	CAP,OIL FIL(*15,27,30,33,35)(INCLS SEAL)(SPECIAL ENGINE OIL REQUIRED)(STAMPED 5W-30)(AC- DELCO #FC162)	94	I (L05)	1	10108694
	1.758	CAP,OIL FIL(*27,33,35,37)(INCLS SEAL)(SPECIAL ENGINE OIL REQUIRED)(STAMPED 5W-30)(AC- DELCO #FC162)	95 - 97	I (L05)	1	10108694
	1.758	CAP,OIL FIL(*41,43,44)(97.5 MM TUBE W/THREADED CAP)(AC-DELCO #FC212)	02	I (LG9)	1	93439687
	1.758	CAP,OIL FIL(*41,43,44,46,48,49)(97.5 MM TUBE	03 - 04	I (LG9)	1	93439687

		W/THREADED CAP)(AC-DELCO #FC212)			
	1.758	CAP,OIL FIL(*7,14,17,21,22)(INCLS SEAL)(SPECIAL ENGINE OIL REQUIRED)(STAMPED 5W-30)(AC-DELCO #FC162)	93	I (L05)	1 10108694
	1.758	CAP,OIL FIL(97.5 MM TUBE W/THREADED CAP)(AC-DELCO #FC212)	98 - 01	I (L31)	1 93439687
29.	0.386	COVER,VLV RKR ARM(*1,2,3,4,5,6,8,10,11,12,13,15,16,18,19,20,23,24,25,26)(WHEN USED IN PLACE OF 14091637,10108650 MUST ALSO BE USED)	91 - 93	I (L05)	1 12555269
	0.386	COVER,VLV RKR ARM(*1,2,3,4,5,6,8,10,11,12,13,15,16,18,20,23,24,25,26.) (WHEN USED IN PLACE OF 14091637,10108650 MUST ALSO BE USED)	91 - 93	I (L05)	LH 12555269
	0.386	COVER,VLV RKR ARM(*1,2,3,5,12,14,15,19,20,22,23,24,25,26,28,29,30,32,36)(WHEN USED IN PLACE OF 14091637,10108650 MUST ALSO BE USED)	95	I (L05)	1 12555269
	0.386	COVER,VLV RKR ARM(*1,2,3,5,12,17,19,20,21,23,24,25,26,28,29,32)(WHEN USED IN PLACE OF 14091637,10108650 MUST ALSO BE USED)	94	I (L05)	1 12555269
	0.386	COVER,VLV RKR ARM(*14,22)	91 - 97	I (L05)	LH 12555270
	0.386	COVER,VLV RKR ARM(*14,22)	91 - 97	I (L05)	RH 12555271
	0.386	COVER,VLV RKR ARM(*15)	94 - 95	I (L05)	RH 12552322
	0.386	COVER,VLV RKR ARM(*17)(WHEN USED IN PLACE OF 14091637,10108650 MUST ALSO BE USED)	91 - 92	I (L05)	LH 12555269
	0.386	COVER,VLV RKR ARM(*17,19,20,21,23,24,38,39,40,41)(WHEN USED IN PLACE OF 14091637,10108650 MUST ALSO BE USED)	96 - 97	I (L05,L31)	2 12555269
	0.386	COVER,VLV RKR ARM(*22,42,43)	98 - 01	I (L31)	RH 12555270
	0.386	COVER,VLV RKR ARM(*27)	96 - 97	I (L05)	LH 12552321
	0.386	COVER,VLV RKR ARM(*27)	96 - 97	I (L05)	RH 12552322
	0.386	COVER,VLV RKR ARM(*27,33)	94 - 95	I (L05)	LH 12552321
	0.386	COVER,VLV RKR ARM(*27,33)	94 - 95	I (L05)	RH 12552322
	0.386	COVER,VLV RKR ARM(*30,35)	94	I (L05)	2 12552322
	0.386	COVER,VLV RKR ARM(*31)(CAST ALUMINUM)	94	I (L05) (1ST DES)	1 10055782
	0.386	COVER,VLV RKR ARM(*31)(STAMPED STEEL)(WHEN USED IN PLACE OF 14091637,10108650 MUST ALSO BE USED)	94	I (L05) (2ND DES)	1 12555269
	0.386	COVER,VLV RKR ARM(*34)(WHEN USED IN PLACE OF 14091637,10108650 MUST ALSO BE USED)	94 - 97	I (L05,L31)	RH 12555269
	0.386	COVER,VLV RKR ARM(*34)	94 - 97	I (L05)	LH 12555272

	0.386	COVER,VLV RKR ARM(*34,41)	96 - 01	I (L31)	LH 12555272
	0.386	COVER,VLV RKR ARM(*34,41)(WHEN USED IN PLACE OF 14091637,10108650 MUST ALSO BE USED)	98 - 01	I (L31)	RH 12555269
	0.386	COVER,VLV RKR ARM(*35,37)	96 - 97	I (L05)	2 12552322
	0.386	COVER,VLV RKR ARM(*41,42,43,44,46,48,49)	02 - 04	I (LG9)	LH 12555271
	0.386	COVER,VLV RKR ARM(*41,44,46,48,49)(WHEN USED IN PLACE OF 14091637,10108650 MUST ALSO BE USED)	02 - 04	I (LG9)	RH 12555269
	0.386	COVER,VLV RKR ARM(*43)	02 - 04	I (LG9)	RH 12555270
	0.386	COVER,VLV RKR ARM(*7,17,21)	93	I (L05)	1 12552322
	0.386	COVER,VLV RKR ARM(*7,21)	91 - 92	I (L05)	RH 10055782
	0.386	COVER,VLV RKR ARM(*9)	91 - 92	I (L05)	2 14025548
30.	0.423	GASKET,VLV RKR ARM CVR(*1,2,3,4,5,6,10,11,12,13,14,15,16,18,19,20,22,23,24,25,26)	91 - 93	I (L05)	2 10046089
	0.423	GASKET,VLV RKR ARM CVR(*1,2,3,5,12,14,15,17,19,20,21,22,23,24,25,26,28,29,30,32,34,36)	94 - 95	I (L05)	2 10046089
	0.423	GASKET,VLV RKR ARM CVR(*14,17,19,20,21,22,23,24,34,38,39,40,41)	96 - 97	I (L05,L31)	2 10046089
	0.423	GASKET,VLV RKR ARM CVR(*15)	94 - 95	I (L05)	AR 10108625
	0.423	GASKET,VLV RKR ARM CVR(*17)	91 - 92	I (L05)	2 10046089
	0.423	GASKET,VLV RKR ARM CVR(*22,34,41,42,43)	98 - 01	I (L31)	2 10046089
	0.423	GASKET,VLV RKR ARM CVR(*27,33)	94 - 95	I (L05)	AR 10108625
	0.423	GASKET,VLV RKR ARM CVR(*27,35,37)	96 - 97	I (L05)	AR 10108625
	0.423	GASKET,VLV RKR ARM CVR(*30,35)	94	I (L05)	AR 10108625
	0.423	GASKET,VLV RKR ARM CVR(*31)	94	I (L05) (2ND DES)	2 10046089
	0.423	GASKET,VLV RKR ARM CVR(*31)	94	I (L05) (1ST DES)	2 14088564
	0.423	GASKET,VLV RKR ARM CVR(*41,43,44,46,48,49)	02 - 04	I (LG9)	2 10046089
	0.423	GASKET,VLV RKR ARM CVR(*7,17,21)	93	I (L05)	AR 10108625
	0.423	GASKET,VLV RKR ARM CVR(*7,8,21)	91 - 92	I (L05)	2 14088564
	0.423	GASKET,VLV RKR ARM CVR(*9)	91 - 92	I (L05)	2 14082322
31.	0.293	BOLT,CYL HD(7/16-14 X 1.62)	91 - 93	I (L05)	16 10168527
	0.293	BOLT,CYL HD(*1,2,3,5,12,14,15,19,22,23,24,25,26,28,29,30.)(7/16-14 X 1.62)	94	I (L05)	16 10168527
	0.293	BOLT,CYL HD(*17,21,27,31,33.)(7/16-14 X 1.62)	94	I (L05)	2 10168527
	0.293	BOLT,CYL HD(7/16-14 X 1.62)	95	I (L05)	16 10168527
	0.293	BOLT,CYL HD(7/16-14 X 1.62)(*14,17,19,20,21,22,23,24)	96 - 97	I (L05)	16 10168527
	0.293	BOLT,CYL HD(7/16-14 X 1.62)(*27,35,39,40)	96 - 97	I (L05)	16 10168527
	0.293	BOLT,CYL HD(7/16-14 X 1.62)(*34,37,38)	96 - 97	I (L31)	16 10168527

	0.293	BOLT,CYL HD(7/16-14 X 1.62)(*22,34,41,42,43)	98 - 99	I (L31)	16 10168527
	0.293	BOLT,CYL HD(7/16-14 X 1.62)(*22,34,41,42,43,44)	00 - 01	I (L31)	16 10168527
	0.293	BOLT,CYL HD(7/16-14 X 1.62)(*41,43,44)	02	I (LG9)	16 10168527
	0.293	BOLT,CYL HD(7/16-14 X 1.62)(*41,42,43,44,46,48,49)	03	I (LG9)	16 10168527
	0.293	BOLT,CYL HD(7/16-14 X 1.62)(*41,43,44,46,48,49)	04	I (LG9)	16 10168527
32.	2.270	SPARK PLUG,(* 1,2,3,4,5,6,7,8,10,11,12,13,15,16,18,19,20,23,24,25,26) (AC-DELCO #MR43T)	91 - 93	I (L05)	8 05613438
	2.270	SPARK PLUG,(* 1,2,3,4,5,6,7,8,10,11,12,13,15,16,18,19,20,23,24,25,26) (AC-DELCO #10)	91 - 93	I (L05)	8 25171349
	2.270	SPARK PLUG,(* 1,2,3,5,12,15,17,19,20,22,23,24,25,26,28,29,30,32,34) (AC-DELCO #MR43T)	94	I (L05)	8 05613438
	2.270	SPARK PLUG,(* 1,2,3,5,12,15,17,19,20,22,23,24,25,26,28,29,30,32,34) (AC-DELCO #10)	94	I (L05)	8 25171349
	2.270	SPARK PLUG,(* 1,2,3,5,12,15,19,20,23,24,25,26,28,29,30,32,34)(AC- DELCO #MR43T)	95	I (L05)	8 05613438
	2.270	SPARK PLUG,(* 1,2,3,5,12,15,19,20,23,24,25,26,28,29,30,32,34)(AC- DELCO #10)	95	I (L05)	8 25171349
	2.270	SPARK PLUG,(*17)(AC-DELCO #MR43T)	91 - 92	I (L05)	8 05613438
	2.270	SPARK PLUG,(*17)(AC-DELCO #10)	91 - 92	I (L05)	8 25171349
	2.270	SPARK PLUG,(*17)(AC-DELCO #MR43LTS)	93	I (L05)	8 05614210
	2.270	SPARK PLUG,(*17,21,27,31,33,35)(AC-DELCO #MR43LTS)	94	I (L05)	8 05614210
	2.270	SPARK PLUG,(*17,21,27,31,33,35)(AC-DELCO #41- 932)	94	I (L05)	8 25162556
	2.270	SPARK PLUG,(*17,21,27,31,33,35)(AC-DELCO #8)	94	I (L05)	8 25171347
	2.270	SPARK PLUG,(*17,21,27,31,33,35)(AC-DELCO #12)	94	I (L05)	8 25332827
	2.270	SPARK PLUG,(*17,21,27,34,37,38,41)(AC-DELCO #MR43LTS)	96 - 97	I (L05)	8 05614210
	2.270	SPARK PLUG,(*17,21,27,34,37,38,41)(AC-DELCO #41- 932)	96 - 97	I (L05)	8 25162556
	2.270	SPARK PLUG,(*17,21,27,34,37,38,41)(AC-DELCO #8)	96 - 97	I (L05)	8 25171347
	2.270	SPARK PLUG,(*17,21,27,34,37,38,41)(AC-DELCO #12)	96 - 97	I (L05)	8 25332827
	2.270	SPARK PLUG,(*19,20,23,24,35,39,40)(AC-DELCO #MR43T)	96 - 97	I (L05)	8 05613438
	2.270	SPARK PLUG,(*19,20,23,24,35,39,40)(AC-DELCO #10)	96 - 97	I (L05)	8 25171349
	2.270	SPARK PLUG,(*21)(AC-DELCO #MR43LTS)	92 - 93	I (L05)	8 05614210
	2.270	SPARK PLUG,(*21)(AC-DELCO #41-932)	92 - 93	I (L05)	8 25162556

	2.270	SPARK PLUG,(*21)(AC-DELCO #8)	92 - 93	I (L05)	8	25171347
	2.270	SPARK PLUG,(*21)(AC-DELCO #12)	92 - 93	I (L05)	8	25332827
	2.270	SPARK PLUG,(*27,33,36)(AC-DELCO #MR43LTS)	95	I (L05)	8	05614210
	2.270	SPARK PLUG,(*27,33,36)(AC-DELCO #41-932)	95	I (L05)	8	25162556
	2.270	SPARK PLUG,(*27,33,36)(AC-DELCO #8)	95	I (L05)	8	25171347
	2.270	SPARK PLUG,(*27,33,36)(AC-DELCO #12)	95	I (L05)	8	25332827
	2.270	SPARK PLUG,(*33,35)(AC- R45TS)(AC-DELCO #2)	03 - 04	I (638)	4	25164640
	2.270	SPARK PLUG,(*34,37,38)(AC-DELCO #MR43LTS)	97	I (L05)	8	05614210
	2.270	SPARK PLUG,(*34,37,38)(AC-DELCO #41-932)	97	I (L05)	8	25162556
	2.270	SPARK PLUG,(*34,37,38)(AC-DELCO #12)	97	I (L05)	8	25332827
	2.270	SPARK PLUG,(*34,41)(AC-DELCO #41-932)	98 - 01	I (L31)	8	25162556
	2.270	SPARK PLUG,(*34,41)(AC-DELCO #12)	98 - 01	I (L31)	8	25332827
	2.270	SPARK PLUG,(*34,41.)(AC-DELCO #MR43LTS)	98 - 01	I (L31)	8	05614210
	2.270	SPARK PLUG,(*34,41.)(AC-DELCO #41-932)	98 - 01	I (L31)	8	25162556
	2.270	SPARK PLUG,(*34,41.)(AC-DELCO #8)	98 - 01	I (L31)	8	25171347
	2.270	SPARK PLUG,(*34,41.)(AC-DELCO #12)	98 - 01	I (L31)	8	25332827
	2.270	SPARK PLUG,(*41,44)(AC-DELCO #MR43LTS)	02	I (LG9)	8	05614210
	2.270	SPARK PLUG,(*41,44)(AC-DELCO #41-932)	02	I (LG9)	8	25162556
	2.270	SPARK PLUG,(*41,44)(AC-DELCO #8)	02	I (LG9)	8	25171347
	2.270	SPARK PLUG,(*41,44)(AC-DELCO #12)	02	I (LG9)	8	25332827
	2.270	SPARK PLUG,(*42,43)(AC-DELCO #41-932)	98 - 01	I (L31)	8	25162556
	2.270	SPARK PLUG,(*42,43)(AC-DELCO #12)	98 - 01	I (L31)	8	25332827
	2.270	SPARK PLUG,(*43,44,46,48,49)(AC-DELCO #41-932)	03 - 04	I (LG9)	8	25162556
	2.270	SPARK PLUG,(*43,44,46,48,49)(AC-DELCO #12)	03 - 04	I (LG9)	8	25332827
	2.270	SPARK PLUG,(*9,14,22)(AC-DELCO #MR44T)	91 - 97	I (L05)	8	05613689
	2.270	SPARK PLUG,(*9,14,22)(AC-DELCO #10)	91 - 97	I (L05)	8	25171349
33.	8.900	BOLT, HFH (1/4-20X.56 280M PZOR)(SPLG WIRE RET BRKT)(*14)	91 - 93	I (L05)	4	09439930
	8.900	BOLT, HFH (1/4-20X.56 280M PZOR)(SPLG WIRE RET BRKT)(*14,22)	94 - 97	I (L05)	4	09439930
34.	2.251	SUPPORT,SPLG WIRE(*14,21,22)	91 - 93	I (L05)	LH	10045295
	2.251	SUPPORT,SPLG WIRE(*14,22)	94 - 97	I (L05)	LH	10045295
	2.251	SUPPORT,SPLG WIRE(*14,22)	94 - 97	I (L05)	RH	10045296
35.	0.293	PLUG,CYL HD CORE HOLE(* 1,2,3,4,5,6,7,8,10,11,12,13,15,16,18,19,20,23,24,25,26) (8.971)(AC-DELCO #444662)	91 - 93	I (L05)	AR	00444662
	0.293	PLUG,CYL HD CORE HOLE(* 1,2,3,5,12,15,19,20,23,24,25,26,28,29,30,32,34)(8.971) (AC-DELCO #444662)	94 - 95	I (L05)	AR	00444662
	0.293	PLUG,CYL HD CORE HOLE(*14,17,21,22,31,35,36) (AUTO DRAIN,INT SQ,3/8-18X.42 PEOR STL)(8.971)	94 - 96	I (L05)	1	14090911

	0.293	PLUG,CYL HD CORE HOLE(*17,21,27,34)(8.971)(AC-DELCO #444662)	97	I (L05)	1 00444662
	0.293	PLUG,CYL HD CORE HOLE(*19,20,23,24,34,35,37,38,39,40,41.)(8.971)(AC-DELCO #444662)	96 - 97	I (L05,L31)	AR 00444662
	0.293	PLUG,CYL HD CORE HOLE(*22,42,43)(8.971)(AC-DELCO #444662)	98 - 00	I (L31)	2 00444662
	0.293	PLUG,CYL HD CORE HOLE(*27)(1/4-18X.44 AM STD PIPE THD,STL,CZ (USED W/SEALER)(8.971)	96	I (L05)	AR 00144011
	0.293	PLUG,CYL HD CORE HOLE(*27,33)(1/4-18X.44 AM STD PIPE THD,STL,CZ (USED W/SEALER)(8.971)	94 - 95	I (L05)	AR 00144011
	0.293	PLUG,CYL HD CORE HOLE(*34,41.)(8.971)(AC-DELCO #444662)	98 - 01	I (L31)	AR 00444662
	0.293	PLUG,CYL HD CORE HOLE(*41,43)(8.971)(AC-DELCO #444662)	00 - 01	I (L31)	2 00444662
	0.293	PLUG,CYL HD CORE HOLE(*41,43,44,46,48,49)(8.971)(AC-DELCO #444662)	02 - 04	I (LG9)	AR 00444662
	0.293	PLUG,CYL HD CORE HOLE(*41,43,46,48,49)(8.971)(AC-DELCO #444662)	02 - 04	I (LG9)	2 00444662
	0.293	PLUG,CYL HD CORE HOLE(*9,14,17,22)(AUTO DRAIN,INT SQ,3/8-18X.42 PEOR STL)(8.971)	91 - 93	I (L05)	1 14090911
36.	2.251	SUPPORT,SPLG WIRE(FRT RET)(*14,21,22)	91 - 93	I (L05)	LH 14102131
	2.251	SUPPORT,SPLG WIRE(FRT RET)(*14,22)	94 - 97	I (L05)	LH 14102131
	2.251	SUPPORT,SPLG WIRE(FRT RET)(*14,21,22)	91 - 93	I (L05)	RH 10203468
	2.251	SUPPORT,SPLG WIRE(FRT RET)(*14,22)	94 - 97	I (L05)	RH 10203468
37.	8.971	PLUG, 3/8-18 DRY SEAL(INT MANIF VAC HOLE)(*4,5,6,7,8,9,13,15,16,17,18,19,20,21,23,24)	91 - 93	I (L05)	1 14090911
	8.971	PLUG, 3/8-18 DRY SEAL(INT MANIF VAC HOLE)(*17,19,20,21,23,24,31,32,34,36.)	94 - 96	I (L05)	1 14090911
	8.971	PLUG, 3/8-18 DRY SEAL(INT MANIF VAC HOLE)(*17,19,20,21,23,24,34,35,36,39,40.)	97	I (L05,L31)	1 14090911
	8.971	PLUG,AUTO SQ HD PIPE 3/4X14 STL ZP(4510(INT MANIF VAC HOLE)(*27,33.)(4.510)	94 - 95	I (L05)	AR 00444595
38.	3.265	SHIELD,INT MANIF OIL SPH(PART OF 80)	00 - 04		
	3.265	SHIELD,INT MANIF OIL SPH(*1,2,3,4,5,6,7,8,9,10,11,12,13,14,15,16,18,19,20,22,23,24,25,26)(PART OF 80)	91 - 93	I (L05)	1 06271071
	3.265	SHIELD,INT MANIF OIL SPH(*1,2,3,5,12,14,15,19,20,22,23,24,25,26,28,29,30,32)(PART OF 80)	94 - 95	I (L05)	1 06271071
	3.265	SHIELD,INT MANIF OIL SPH(*14,19,20,22,23,24,35,39,40.)(PART OF 80)	96 - 97	I (L05,L31)	1 06271071
	3.265	SHIELD,INT MANIF OIL SPH(*27,33)(PART OF 80)	94 - 97	I (L05)	1 10128305

	3.265	SHIELD,INT MANIF OIL SPH(*34)(PART OF 80)	95	I (L05)	1	06271071
39.	3.265	BOLT,INT MANIF OIL SPH SHLD	00 - 04			
	3.265	BOLT,INT MANIF OIL SPH SHLD(*27,33)(M6X1X12,FL HD)(8.900)	94 - 96	I (L05)	4	11516061
	3.265	STUD,INT MANIF OIL SPH SHLD	00 - 04			
	3.265	STUD,INT MANIF OIL SPH SHLD(* 1,2,3,5,14,15,19,20,22,23,24,25,265,28,29,30,32.) (3.601)	95	I (L05)	4	10229247
	3.265	STUD,INT MANIF OIL SPH SHLD(* 14,19,20,22,23,24,35,39,40)(3.601)	96 - 97	I (L05)	4	10229247
40.	0.296	VALVE,INT(.0035 OS)(*9)	91 - 92	I (L05)	8	03997749
	0.296	VALVE,INT(.0035" O.S.)(* 1,2,3,4,5,6,7,8,10,11,12,13,14,15,16,18,19,20,22,23,24, 25,26,28,29,30,32,34)(.0035 O.S.)	91 - 95	I (L05)	8	10166151
	0.296	VALVE,INT(.0035" O.S.)(*17,31,35)	93 - 95	I (L05)	8	10168466
	0.296	VALVE,INT(.0035" O.S.)(*21)	91 - 95	I (L05)	8	10168466
	0.296	VALVE,INT(.015 O.S.)(*9)	91 - 92	I (L05)	8	03997750
	0.296	VALVE,INT(.0155" O.S.)(* 1,2,3,4,5,6,7,8,10,11,12,13,14,15,16,18,19,20,22,23,24, 25,26,28,29,30,32,34)(.0155 O.S.)	91 - 95	I (L05)	8	10166152
	0.296	VALVE,INT(.0155" O.S.)(*17,31,35)	93 - 95	I (L05)	8	10168467
	0.296	VALVE,INT(.0155" O.S.)(*21)	92 - 95	I (L05)	8	10168467
	0.296	VALVE,INT(.0305" O.S.)(* 1,2,3,4,5,6,7,8,10,11,12,13,14,15,16,18,19,20,22,23,24, 25,26,28,29,30,32,34)	91 - 95	I (L05)	8	10166153
	0.296	VALVE,INT(.0305" O.S.)(*17,31,35)	93 - 95	I (L05)	8	10168468
	0.296	VALVE,INT(.0305" O.S.)(*21)	92 - 95	I (L05)	8	10168468
	0.296	VALVE,INT(.0305" O.S.)(*9)	91 - 92	I (L05)	AR	03997751
	0.296	VALVE,INT(* 1,2,3,4,5,6,7,8,10,11,12,13,14,15,16,18,19,20,22,23,24, 25,26,28,29,30,32,34.)(STD)	91 - 95	I (L05)	8	10093027
	0.296	VALVE,INT(*14,19,20,22,23,35,39,40.)(STD)	96 - 97	I (L05)	8	10093027
	0.296	VALVE,INT(*14,19,20,22,23,35,39,40.)(.0035 O.S.)	96 - 97	I (L05)	8	10166151
	0.296	VALVE,INT(*14,19,20,22,23,35,39,40.)(.0155 O.S.)	96 - 97	I (L05)	8	10166152
	0.296	VALVE,INT(*14,19,20,22,23,35,39,40.)	96 - 97	I (L05)	8	10166153
	0.296	VALVE,INT(*17,21,27,34,37,38,41)(.0305 O.S.)(0.297)	96 - 97	I (L05)	8	12550913
	0.296	VALVE,INT(*17,21,27,34,37,39,41)(STD)	96 - 97	I (L05)	8	10241743
	0.296	VALVE,INT(*22,34,41,42,43)(STD)	98 - 01	I (L31)	8	10241743
	0.296	VALVE,INT(*27,33)(STD)	94 - 95	I (L05)	8	10241743
	0.296	VALVE,INT(*41,43,44,46,48,49)(STD)	02 - 04	I (LG9)	8	10241743
	0.296	VALVE,INT(*9)	91 - 92	I (L05)	8	03989088
	0.296	VALVE,INT(STD)(*17)(STD)	91 - 92	I (L05)	8	10093027

	0.296	VALVE,INT(STD)(*17,31,35)	93 - 95	I (L05)	8	10168465
	0.296	VALVE,INT(STD)(*21)	92 - 95	I (L05)	8	10168465
41.	0.297	VALVE,EXH(.0035"O.S.)(*9)	91 - 92	I (L05)	8	14082312
	0.297	VALVE,EXH(.0155"O.S.)(*9)	91 - 92	I (L05)	8	14082313
	0.297	VALVE,EXH(* 1,2,3,4,5,6,7,8,10,11,12,13,14,18,19,20,22,23,24,25,26) (STD)	91 - 93	I (L05)	8	10045251
	0.297	VALVE,EXH(* 1,2,3,5,12,14,15,19,20,22,23,24,25,26,28,29,30,32,34) (STD)	94 - 95	I (L05)	8	10045251
	0.297	VALVE,EXH(* 1,2,3,5,12,14,15,19,20,22,23,24,25,26,28,29,30,32,34) (.0035 O.S.)	94 - 95	I (L05)	8	10054581
	0.297	VALVE,EXH(* 1,2,3,5,12,14,15,19,20,22,23,24,25,26,28,29,30,32,34) (.0155 O.S.)	94 - 95	I (L05)	8	10054582
	0.297	VALVE,EXH(*14,19,20,22,23,24,35,39,40)(STD)	96 - 97	I (L05)	8	10045251
	0.297	VALVE,EXH(*14,19,20,22,23,24,35,39,40)(.0035 O.S.)	96 - 97	I (L05)	8	10054581
	0.297	VALVE,EXH(*14,19,20,22,23,24,35,39,40)(.0155 O.S.)	96 - 97	I (L05)	8	10054582
	0.297	VALVE,EXH(*17,21,27,34,37,38,41.)(STD)	96 - 97	I (L05,L31)	8	12550909
	0.297	VALVE,EXH(*17,31,35)(STD)	93 - 94	I (L05)	8	10168514
	0.297	VALVE,EXH(*17,31,35)(.0035"O.S.)	93 - 94	I (L05)	8	10168515
	0.297	VALVE,EXH(*17,31,35)(.0155 O.S.)	93 - 94	I (L05)	8	10168516
	0.297	VALVE,EXH(*21)(STD)	92 - 94	I (L05)	8	10168514
	0.297	VALVE,EXH(*21)(.0035"O.S.)	92 - 94	I (L05)	8	10168515
	0.297	VALVE,EXH(*21)(.0155 O.S.)	92 - 94	I (L05)	8	10168516
	0.297	VALVE,EXH(*22)(STD)	98	I (L31)	8	12552289
	0.297	VALVE,EXH(*27,33)(STD)	94 - 95	I (L05)	8	12550909
	0.297	VALVE,EXH(*27,33)(.0305 O.S.)	94	I (L05)	8	12550913
	0.297	VALVE,EXH(*31)(STD)	97	I (L31)	8	12552289
	0.297	VALVE,EXH(*34,41.)(STD)	98 - 01	I (L31)	8	12550909
	0.297	VALVE,EXH(*34,41.)(.0305 O.S.)	98 - 00	I (L31)	8	12550913
	0.297	VALVE,EXH(*36)(STD)	95	I (L05)	8	12550909
	0.297	VALVE,EXH(*36)(.0305 O.S.)	95	I (L05)	8	12550913
	0.297	VALVE,EXH(*41,44,44,46,48,49)(STD)	02 - 04	I (LG9)	8	12550909
	0.297	VALVE,EXH(*42,43)(STD)	99 - 01	I (L31)	8	12552289
	0.297	VALVE,EXH(*43)(STD)	02 - 04	I (LG9)	8	12552289
	0.297	VALVE,EXH(STD)	91 - 92	I (L05)	8	14082305
42.	0.459	LIFTER,VLV(* 1,2,3,4,5,6,7,8,9,10,11,12,13,14,22,24,25,26)(AC- DELCO #HL66)	91 - 93	I (L05)	16	05232720
	0.459	LIFTER,VLV(*1,2,3,5,12,14,15,22,24,25,26,28,29,30)	94 - 95	I (L05)	16	05232720

		(AC-DELCO #HL66)		
	0.459	LIFTER ,VLV(*14,22,39)(AC-DELCO #HL66)	96 - 97 I (L05)	16 05232720
	0.459	LIFTER ,VLV(RLR)(*15,16,17,18,19,20,21,23)(AC-DELCO #HL112)	91 - 93 I (L05)	16 05234890
	0.459	LIFTER ,VLV(RLR)(*17,19,20,21,23,27,31,32,33,34,35,36)(AC-DELCO #HL112)	94 - 95 I (L05)	16 05234890
	0.459	LIFTER ,VLV(RLR)(*17,19,20,21,23,24,27,34,35,37,38,40,41.)(AC-DELCO #HL123)	96 - 97 I (L05,L31)	16 17120735
	0.459	LIFTER ,VLV(RLR)(*22,34,41,42,43)(AC-DELCO #HL123)	98 - 01 I (L31)	16 17120735
	0.459	LIFTER ,VLV(RLR)(*41,43,44,46,48,49)(AC-DELCO #HL123)	02 - 04 I (LG9)	16 17120735
43.	0.293	PIN ,CYL HD LOC(5/16X9/16 STL)(8.939)(AC-DELCO #585927)	91 - 95 I (L05)	8 00585927
	0.293	PIN ,CYL HD LOC(5/16X9/16 STL)(8.939)(AC-DELCO #585927)	96 - 97 I (L05,L31)	8 00585927
	0.293	PIN ,CYL HD LOC(5/16X9/16 STL)(8.939)(AC-DELCO #585927)	98 - 01 I (L31)	8 00585927
	0.293	PIN ,CYL HD LOC(*41,43,44,46,48,49)(5/16X9/16 STL)(8.939)(AC-DELCO #585927)	02 - 04 I (LG9)	8 00585927
44.	0.289	GASKET ,CYL HD(*1,2,3,4,5,6,7,8,10,11,12,13,15,16,17,18,19,20,23,24,25,26)	91 - 93 I (L05)	2 14096405
	0.289	GASKET ,CYL HD(*1,2,3,5,12,15,19,20,23,24,25,26,28,29,30,32,34)	94 - 95 I (L05)	2 14096405
	0.289	GASKET ,CYL HD(*14,22)	91 - 97 I (L05,L31)	2 10105117
	0.289	GASKET ,CYL HD(*17)	93 I (L05)	2 12557236
	0.289	GASKET ,CYL HD(*17,21)	96 - 97 I (L05)	2 12557236
	0.289	GASKET ,CYL HD(*17,21,31)	94 I (L05)	2 12557236
	0.289	GASKET ,CYL HD(*19,20,23,24,34,35,37,38,39,40,41)	96 - 97 I (L05,L31)	2 14096405
	0.289	GASKET ,CYL HD(*21)	92 - 93 I (L05)	2 12557236
	0.289	GASKET ,CYL HD(*22,42,43)	98 - 01 I (L31)	2 10105117
	0.289	GASKET ,CYL HD(*27,33)	94 - 97 I (L05)	2 10168457
	0.289	GASKET ,CYL HD(*34,41)	98 - 01 I (L31)	2 14096405
	0.289	GASKET ,CYL HD(*36)	95 I (L05)	2 12557236
	0.289	GASKET ,CYL HD(*41,44,46,48,49)	02 - 04 I (LG9)	2 14096405
	0.289	GASKET ,CYL HD(*43)	02 - 04 I (LG9)	2 10105117
	0.289	GASKET ,CYL HD(*9)	91 - 92 I (L05)	2 10105117
	0.289	GASKET KIT ,CYL HD	00 - 04	
	0.289	GASKET KIT ,CYL HD(*27,33)	94 - 95 I (L05)	1 12369146

45.	0.269	HEAD,CYL(* 1,2,3,4,5,6,7,8,10,11,12,13,15,16,17,18,19,20,22,23,24, 25,26)	91 - 93 I (L05)	2	10159556
	0.269	HEAD,CYL(* 1,2,3,5,12,14,15,19,20,22,23,24,25,26,28,29,30,32,34)	94 - 95 I (L05)	2	10159556
	0.269	HEAD,CYL(*14,19,20,22,23,24,35,39,40)	96 - 97 I (L05)	2	10159556
	0.269	HEAD,CYL(*17,21)	96 - 97 I (L05)	2	12551944
	0.269	HEAD,CYL(*17,21,31,35)(LESS VALVES)(INCLS GUIDE, SEATS, & RKR ARM BALL INSERT)	94 I (L05)	2	10125374
	0.269	HEAD,CYL(*21)(LESS VALVES)(INCLS GUIDE, SEATS, & RKR ARM BALL INSERT)	92 - 93 I (L05)	2	10125374
	0.269	HEAD,CYL(*22,42,43)(W/STUDS)	98 - 01 I (L31)	2	12529509
	0.269	HEAD,CYL(*27,33)	94 - 97 I (L05)	2	10168448
	0.269	HEAD,CYL(*34,37,38,41)(INCLS HD,EXH SEATS,RKR STUDS)	96 - 97 I (L31)	2	12528913
	0.269	HEAD,CYL(*34,41)(INCLS HD,EXH SEATS,RKR STUDS)	98 - 00 I (L31)	2	12528913
	0.269	HEAD,CYL(*36)	95 I (L05)	2	12551944
	0.269	HEAD,CYL(*41,44)(INCLS HD,EXH SEATS,RKR STUDS)	01 I (L31)	2	12528913
	0.269	HEAD,CYL(*41,44,46,48,49)(INCLS HD,EXH SEATS,RKR STUDS)	02 - 04 I (LG9)	2	12528913
	0.269	HEAD,CYL(*43)(W/STUDS)	02 - 04 I (LG9)	2	12529509
46.	0.308	SEAL,INT VLV STEM OIL(*17,21,27,34,37,38,41)	96 - 97 I (L05)	8	10212810
	0.308	SEAL,INT VLV STEM OIL(*22,34,41,42,43)	98 - 01 I (L31)	8	10212810
	0.308	SEAL,INT VLV STEM OIL(*27,33,36)	94 - 95 I (L05)	8	10212810
	0.308	SEAL,INT VLV STEM OIL(*34,37,38)	96 I (L31)	8	10212810
	0.308	SEAL,INT VLV STEM OIL(*41,43,44,46,48,49)	02 - 04 I (LG9)	8	10212810
	0.308	SEAL,EXH VLV STEM OIL	00 - 04		
	0.308	SEAL,EXH VLV STEM OIL(STD)(.0155 O.S.)	91 - 93 I (L05)	8	10168534
	0.308	SEAL,EXH VLV STEM OIL(* 1,2,3,5,12,14,15,19,20,22,23,24,25,26,28,29,30,32,34) (STD)(.0155 O.S.)	94 - 95 I (L05)	8	10168534
	0.308	SEAL,EXH VLV STEM OIL(*14,19,20,22,23,24,35,39,40.) (STD)(.0155 O.S.)	96 - 97 I (L05)	8	10168534
47.	0.303	SPRING,VLV(* 1,2,3,4,5,6,7,8,9,10,11,12,13,14,15,16,18,19,20,22,23,2 4,25,26,28,29,30,32,34)(W/DAMPENER)	91 - 95 I (L05)	16	03911068
	0.303	SPRING,VLV(*14,19,20,22,23,24,35,39,40) (W/DAMPENER)	96 - 97 I (L05)	16	03911068
	0.303	SPRING,VLV(*17,21,27)	96 - 97 I (L05)	16	10206040
	0.303	SPRING,VLV(*17,21,27,31,33,35,36)	91 - 95 I (L05)	16	10206040

	0.303	SPRING,VLV(*22,34,41,42)(W/O DPNR)	98 - 01	I (L31)	16	10212811
	0.303	SPRING,VLV(*34,37,38)(W/O DPNR)	96 - 97	I (L31)	16	10212811
	0.303	SPRING,VLV(*41,43,44,46,48,49)(W/O DPNR)	02 - 04	I (LG9)	16	10212811
48.	0.308	SHIELD,VLV STEM OIL	00 - 04			
	0.308	SHIELD,VLV STEM OIL	91 - 93	I (L05)	12	10007818
	0.308	SHIELD,VLV STEM OIL(* 1,2,3,5,12,14,15,19,20,22,23,24,25,26,28,29,30,32,34)	94 - 95	I (L05)	12	10007818
	0.308	SHIELD,VLV STEM OIL(*14,19,20,22,23,24,35,39,40)	96 - 97	I (L05)	12	10007818
49.	0.293	BOLT,CYL HD(MEDIUM)(7/16-14 X 3 1/16, 300M)	91 - 93	I (L05)	4	10168526
	0.293	BOLT,CYL HD(* 1,2,3,5,12,14,15,17,19,20,21,22,23,24,25,26,27,28,29,30,31,33.)(MEDIUM)(7/16-14 X 3 1/16, 300M)	94	I (L05)	4	10168526
	0.293	BOLT,CYL HD(MEDIUM)(7/16-14 X 3 1/16, 300M)	95	I (L05)	4	10168526
	0.293	BOLT,CYL HD(MEDIUM)(7/16-14 X 3 1/16, 300M)	96 - 01	I (L31)	4	10168526
	0.293	BOLT,CYL HD(MEDIUM)(7/16-14 X 3 1/16, 300M)	02 - 04	I (LG9)	4	10168526
50.	0.308	SEAL,VLV STEM OIL	00 - 04			
	0.308	SEAL,VLV STEM OIL(O-RING TYPE)	91 - 93	I (L05)	12	10214034
	0.308	SEAL,VLV STEM OIL(.394MM O.S.)	91 - 93	I (L05)	12	88984047
	0.308	SEAL,VLV STEM OIL(* 1,2,3,5,12,14,15,19,20,22,23,24,25,26,28,29,30,32,34) (O-RING TYPE)	94 - 95	I (L05)	12	10214034
	0.308	SEAL,VLV STEM OIL(*14,19,20,22,23,24,35,39,40)(O-RING TYPE)	96 - 97	I (L05,L31)	12	10214034
	0.308	SEAL,VLV STEM OIL	00 - 04			
	0.308	SEAL,VLV STEM OIL(*17,21,31,35)	94 - 95	I (L05)	16	10128383
	0.308	SEAL,INT VLV STEM OIL(*17,21,27,34,37,38,41)	96 - 97	I (L05)	8	10212810
	0.308	SEAL,INT VLV STEM OIL(*22,34,41,42,43)	98 - 01	I (L31)	8	10212810
	0.308	SEAL,INT VLV STEM OIL(*27,33,36)	94 - 95	I (L05)	8	10212810
	0.308	SEAL,INT VLV STEM OIL(*34,37,38)	96	I (L31)	8	10212810
	0.308	SEAL,INT VLV STEM OIL(*41,43,44,46,48,49)	02 - 04	I (LG9)	8	10212810
	0.308	SEAL,EXH VLV STEM OIL(*14,22,34,41)	98 - 01	I (L31)	8	12564852
	0.308	SEAL,EXH VLV STEM OIL(*22,34,41,42,43)	98 - 00	I (L31)	8	10212810
	0.308	SEAL,EXH VLV STEM OIL(*34,37,38,41.)	97	I (L31)	8	12564852
	0.308	SEAL,EXH VLV STEM OIL(*41,43,44,46,48,49)	02 - 04	I (LG9)	8	12564852
51.	0.293	BOLT,CYL HD(LONG)(7/16-14 X 3 51/64, 300M)	91 - 93	I (L05)	14	10168525
	0.293	BOLT,CYL HD(* 1,2,3,5,12,14,15,19,20,22,23,24,25,26,28,29,30.) (LONG)(7/16-14 X 3 51/64, 300M)	94	I (L05)	14	10168525
	0.293	BOLT,CYL HD(7/16-14X3 51/64)(*17,21,27,31,33.) (LONG)(7/16-14 X 3 51/64, 300M)	94	I (L05)	14	10168525
	0.293	BOLT,CYL HD(LONG)(7/16-14 X 3 51/64, 300M)	95 - 97	I (L05)	14	10168525
	0.293	BOLT,CYL HD(LONG)(7/16-14 X 3 51/64, 300M)	96 - 01	I (L31)	14	10168525

	0.293	BOLT,CYL HD(LONG)(7/16-14 X 3 51/64, 300M)(* 41,42,44)	02	I (LG9)	14 10168525
	0.293	BOLT,CYL HD(LONG)(7/16-14 X 3 51/64, 300M)(* 41,42,44,46,48,49)	03	I (LG9)	14 10168525
	0.293	BOLT,CYL HD(LONG)(7/16-14 X 3 51/64, 300M)(* 41,42,44,46,48,49)	04	I (LG9)	14 10168525
52.	0.309	CAP,VLV SPR(* 1,2,3,4,5,6,7,8,9,10,11,12,13,14,15,16,18,19,20,22,23,2 4,25,26,28,29,30,32,34)	91 - 95	I (L05)	16 14003974
	0.309	CAP,VLV SPR(*17,21,27)	96 - 97	I (L05)	16 10212808
	0.309	CAP,VLV SPR(*17,21,31,35)	91 - 94	I (L05)	AR 10168424
	0.309	CAP,VLV SPR(*22,34,41,42,43)	98 - 01	I (L31)	8 10241744
	0.309	CAP,VLV SPR(*27,33,36)	94 - 95	I (L05)	16 10212808
	0.309	CAP,VLV SPR(*34,37,38,41.)	96 - 97	I (L31)	16 10241744
	0.309	CAP,VLV SPR(*41,43,44,46,48,49)	02 - 04	I (LG9)	16 10241744
53.	0.310	KEY,VLV STEM	91 - 97	I (L05,L31)	32 24503856
	0.310	KEY,VLV STEM	98 - 01	I (L31)	32 24503856
	0.310	KEY,VLV STEM(*41,43,44,46,48,49)	02 - 04	I (LG9)	32 24503856
54.	3.270	GASKET KIT,INT MANIF	00 - 01		
	3.270	GASKET KIT,INT MANIF(* 1,2,3,4,5,6,7,8,10,11,12,13,14,15,16,17,18,19,20,21,22, 23,24,25,26,28,29,30,31,32,34,35,36)	91 - 95	I (L05)	1 12525816
	3.270	GASKET KIT,INT MANIF(* 14,17,19,20,21,22,23,24,35,39,40.)	97	I (L05)	1 12525816
	3.270	GASKET KIT,INT MANIF(* 14,17,19,21,22,23,24,35,39,40)	96	I (L05)	1 12525816
	3.270	GASKET KIT,INT MANIF(*27,33)	94 - 95	I (L05)	1 12524653
	3.270	GASKET KIT,INT MANIF(*44,46) (INCLS:GASKET,INSTRUCTION SHEET)	03	I (LG9)	1 89017465
	3.270	GASKET KIT,INT MANIF(*44,46) (INCLS:GASKET,INSTRUCTION SHEET)	03	I (LG9)	1 93441568
	3.270	GASKET KIT,INT MANIF(*9)	91 - 92	I (L05)	1 10159493
55.	0.309	ROTATOR,VLV	00 - 04		
	0.309	ROTATOR,VLV(* 1,2,3,4,5,6,7,8,9,10,11,12,13,14,15,16,18,19,20,22,23,2 4,25,26,28,29,30,32,34,36)	91 - 95	I (L05)	8 14042575
	0.309	ROTATOR,VLV(*14,19,20,22,23,24,35,39,40)	96 - 97	I (L05)	8 14042575
56.	0.429	NUT,VLV RKR ARM(3/8-24)	91 - 96	I (L05)	16 12557390
	0.429	NUT,VLV RKR ARM(3/8-24)	96 - 01	I (L31)	16 12557390
	0.429	NUT,VLV RKR ARM(*41,43,44,46,48,49)(3/8-24)	02 - 04	I (LG9)	16 12557390
57.	NS	BALL,VLV RKR ARM(PART OF ITEM #59)			
58.	0.429	STUD,VLV RKR ARM BALL(.003" O.S.)(* 	91 - 95	I (L05)	16 03814692

		1,2,3,4,5,6,7,8,9,10,11,12,13,14,15,16,18,19,20,22,23,24,25,26,28,29,30,32,34)			
	0.429	STUD ,VLV RKR ARM BALL(.003" O.S.)(*14,19,20,22,23,24,34,35,37,38,39,40,41.)	96 - 97	I (L05,L31)	16 03814692
	0.429	STUD ,VLV RKR ARM BALL(.003" O.S.)(*17)	91 - 92	I (L05)	16 03814692
	0.429	STUD ,VLV RKR ARM BALL(.003" O.S.)(*22,34,41,42,43)	98 - 01	I (L31)	16 03814692
	0.429	STUD ,VLV RKR ARM BALL(.003" O.S.)(*41,43,44,46,48,49)	02 - 04	I (LG9)	16 03814692
	0.429	STUD ,VLV RKR ARM BALL(.013" O.S.)(*1,2,3,4,5,6,7,8,9,10,11,12,13,14,15,16,18,19,20,22,23,24,25,26,28,29,30,32,34.)	91 - 95	I (L05)	16 03815892
	0.429	STUD ,VLV RKR ARM BALL(.013" O.S.)(*14,19,20,22,23,24,34,35,37,38,39,40)	96 - 97	I (L05,L31)	16 03815892
	0.429	STUD ,VLV RKR ARM BALL(.013" O.S.)(*17)	91 - 92	I (L05)	16 03815892
	0.429	STUD ,VLV RKR ARM BALL(.013" O.S.)(*22,34,41,42,43)	98 - 01	I (L31)	16 03815892
	0.429	STUD ,VLV RKR ARM BALL(.013" O.S.)(*41,43,44,46,48,49)	02 - 04	I (LG9)	16 03815892
	0.429	STUD ,VLV RKR ARM BALL(*17,31,35)	93 - 94	I (L05)	8 10168410
	0.429	STUD ,VLV RKR ARM BALL(*21)	92 - 94	I (L05)	8 10168410
	0.429	STUD ,VLV RKR ARM BALL(*27,33,36)	94 - 95	I (L05)	16 12552126
	0.429	STUD ,VLV RKR ARM BALL(*27,35,37)	96 - 97	I (L05)	16 12552126
59.	0.333	ARM KIT ,VLV RKR(*41,43,44,46,48,49)(W/ARM,BALL,NUT)(INCL ITEMS #57)(STD THREADS)(INCLS ARM, BALL & NUT)	02 - 04	I (LG9)	16 10089648
	0.333	ARM KIT ,VLV RKR(W/ARM,BALL,NUT)(INCL ITEMS #57)(STD THREADS)(INCLS ARM, BALL & NUT)	91 - 97	I (L05)	16 10089648
	0.333	ARM KIT ,VLV RKR(W/ARM,BALL,NUT)(INCL ITEMS #57)(STD THREADS)(INCLS ARM, BALL & NUT)	98 - 01	I (L31)	16 10089648
60.	0.426	ROD ,VLV PUSH(*1,2,3,4,5,6,7,8,9,10,11,12,13,14,15,22,24,25,26,28,29,30)	91 - 95	I (L05)	16 14095256
	0.426	ROD ,VLV PUSH(*14,22,39)	96 - 97	I (L05)	16 14095256
	0.426	ROD ,VLV PUSH(*15,16,17,18,19,20,21,21,23,27,31,33,34,35,36)(INCLS INSERTS)	91 - 95	I (L05)	16 10046173
	0.426	ROD ,VLV PUSH(*17,19,20,21,23,24,27,34,35,37,38,40,41.)(INCLS INSERT)	96 - 97	I (L05,L31)	16 10241740
	0.426	ROD ,VLV PUSH(*22,34,41,42,43)(INCLS INSERT)	98 - 01	I (L31)	16 10241740
	0.426	ROD ,VLV PUSH(*41,43,44,46,48,49)(INCLS INSERT)	02 - 04	I (LG9)	16 10241740
61.	3.265	MANIFOLD ,INT	00 - 04		
	3.265	MANIFOLD ,INT(*1,2,3,10,11,12,14,21,25,26)	91 - 93	I (L05)	1 14097496
	3.265	MANIFOLD ,INT(*1,2,3,12,14,25,26,28,30)	94 - 95	I (L05)	1 14097496

	3.265	MANIFOLD,INT(*14)	96 - 97	I (L05)	1	14097496
	3.265	MANIFOLD,INT(*14,21,31,35)	94	I (L05)	1	10185063
	3.265	MANIFOLD,INT(*17,21)	91 - 93	I (L05)	1	10185063
	3.265	MANIFOLD,INT(*17,21)	96 - 97	I (L05)	1	10185063
	3.265	MANIFOLD,INT(*19,20,23,35,40)	96 - 97	I (L05)	1	14097494
	3.265	MANIFOLD,INT(*22,24)	91 - 95	I (L05)	1	14097498
	3.265	MANIFOLD,INT(*22,24,39,41)	96 - 97	I (L05)	1	14097498
	3.265	MANIFOLD,INT(*34,37,38,41)	96 - 97	I (L31)	1	12553916
	3.265	MANIFOLD,INT(*34,41)	98 - 99	I (L31)	1	12553916
	3.265	MANIFOLD,INT(*36)	95	I (L05)	1	10185063
	3.265	MANIFOLD,INT(*4,5,6,7,8,13,15,16,17,18,19,20,23)	91 - 93	I (L05)	1	14097494
	3.265	MANIFOLD,INT(*5,19,20,23,32)	94	I (L05)	1	14097494
	3.265	MANIFOLD,INT(*5,19,20,23,32,34)	95	I (L05)	1	14097494
	3.265	MANIFOLD,INT(*9)(2 BARREL MANIFOLD)	91 - 92	I (L05)	1	14057060
62.	3.265	PLUG,EGR VLV INT MANIF HOLE	00 - 04			
	3.265	PLUG,EGR VLV INT MANIF HOLE(* 1,2,3,10,11,12,14,15,25,26,28,29,30)(3/4-14, STEEL) (SQ SOCKET DRAIN)(8.971)(AC-DELCO #9409961)	91 - 95	I (L05)	1	09409961
	3.265	PLUG,EGR VLV INT MANIF HOLE(*14)(3/4-14, STEEL) (SQ SOCKET DRAIN)(8.971)(AC-DELCO #9409961)	96 - 97	I (L05)	1	09409961
63.	0.004	BRACKET,ENG LIFT FRT	00 - 04			
	0.004	BRACKET,ENG LIFT FRT(* 1,2,3,5,12,15,17,19,20,21,23,24,25,26,28,29,30,31,32,3 6)	94 - 95	I (L05)	1	14094742
	0.004	BRACKET,ENG LIFT FRT(*14,22)	91 - 97	I (L05)	1	10134335
	0.004	BRACKET,ENG LIFT FRT(*34)	95	I (L05)	1	10134335
64.	3.275	BOLT,INT MANIF(1.25 LG)(3/8-16X1.25)(*9)	91 - 92	I (L05)	6	10198997
	3.275	BOLT,INT MANIF(1.50 LG)(* 1,2,3,4,5,6,7,8,10,11,12,13,14,15,16,17,18,19,20,21,22, 23,24,25,26,28,29,30,31,32.)(7.006)	91 - 94	I (L05)	6	88891769
	3.275	BOLT,INT MANIF(* 1,2,3,5,12,14,15,17,19,20,21,22,23,24,25,26,27,29,30,3 1,32,34,35,36.)(7.006)	95	I (L05)	6	88891769
	3.275	BOLT,INT MANIF(* 14,17,19,20,21,22,23,24,35,36,39,40.)(7.006)	96 - 97	I (L05)	6	88891769
65.	8.900	BOLT,HEX 3/8-16X1.12 280M PEOR FULL THD(ENG SHPG LAT)(2.042)	91 - 97	I (L05)	2	09442339
66.	8.917	NUT,HFX,1/4-20X.234,284M,69K,POR,240(VLV RKR ARM CVR)	91 - 97	I (L05)	AR	09439915
67.	0.413	REINFORCEMENT,VLV RKR ARM CVR	00 - 04			
	0.413	REINFORCEMENT,VLV RKR ARM CVR(*9)	91 - 92	I (L05)	8	14082321
68.	8.900	BOLT,HEX 3/8-16X2 3/4, 300M(WAT OTLT)(*9)(2.042)	91 - 92	I (L05)	2	15991978

	8.900	BOLT(WAT OTLT)(*14,22)(3.275)	91 - 97	I (L05)	2	10198997
69.	1.154	GASKET,WAT OTLT	00 - 04			
	1.154	GASKET,WAT OTLT(*9,14,22)(AC-DELCO #10105135)	91 - 97	I (L05)	1	10105135
70.	1.153	OUTLET,WAT	00 - 04			
	1.153	OUTLET,WAT(AC-DELCO #15-1567)	94	I (L05)	1	10147884
	1.153	OUTLET,WAT(AC-DELCO #15-1567)	96 - 97	I (L05)	1	10147884
	1.153	OUTLET,WAT(*14)	91 - 93	I (L05)	1	14088753
	1.153	OUTLET,WAT(*14)(AC-DELCO #15-1567)	95	I (L05)	1	10147884
	1.153	OUTLET,WAT(*22)(AC-DELCO #15-1567)	95	I (L05)	1	10147884
	1.153	OUTLET,WAT(*9,22)	91 - 94	I (L05)	1	14088753
71.	8.971	PLUG,SQ HD,3/4-14 NPT,1.06 LG,CAST IRON,ZC(ENG COOL THERM HSG)(* 1,2,3,4,5,6,7,8,9,10,11,12,13,15,16,17,18,19,20,23,24,2 5,26,28,29,30,31,32,34,35,36.)	91 - 95	I (L05)	1	00143936
	8.971	PLUG,SQ HD,3/4-14 NPT,1.06 LG,CAST IRON,ZC(ENG COOL THERM HSG)(* 17,19,20,21,23,24,34,35,37,38,39,40.)	96 - 97	I (L05)	1	00143936
72.	1.251	HOUSING,ENG COOL THERM	00 - 04			
	1.251	HOUSING,ENG COOL THERM(*9)	91 - 92	I (L05)	1	00460767
73.	1.246	THERMOSTAT,ENG COOL(W/GSKT)	00 - 04			
	1.246	THERMOSTAT,ENG COOL(W/GSKT)(*27,33 (180 DEG) (AC-DELCO #131-100)	94 - 97	I (L05)	1	12555290
	1.246	THERMOSTAT,ENG COOL	00 - 04			
	1.246	THERMOSTAT,ENG COOL(*27,33 180 DEG)(AC- DELCO #131-100)	94 - 95	I (L05)	1	12555290
	1.246	THERMOSTAT,ENG COOL(*9,14,22)	92 - 97	I (L05)	1	10202456
	1.252	SEAL,ENG COOL THERM(O RING)	00 - 04			
	1.252	SEAL,ENG COOL THERM(O RING)(*27,33)(AC-DELCO #12551507)	94 - 97	I (L05)	1	12551507
74.	1.073	PLUG,HTR HOSE NIP HOLE(* 1,2,3,4,5,6,7,8,10,11,12,13,15,16,17,18,19,20,21,23,24, 25,26)(SQ HD FILL & DRN 1/2-14X0.610.) (PLAIN) (8.971)	91 - 93	I (L05)	1	00444746
	1.073	PLUG,HTR HOSE NIP HOLE(* 1,2,3,4,5,6,7,8,9,10,11,12,13,14,15,16,17,18,19,20)(1/2- 14X 39/64,STL,PE)(HEADLESS SQ SOC,USE W/SEALER #1052080)(8.971)(AC-DELCO #25522466)	91 - 93	I (L05)	2	25522466
	1.073	PLUG,HTR HOSE NIP HOLE(* 1,2,3,5,12,14,15,17,19,20,21,22,23,24,25,26,28,29,30,3 1,32,35,36,39,40.)(1/2-14X 39/64,STL,PE)(HEADLESS SQ SOC,USE W/SEALER #1052080)(8.971)(AC- DELCO #25522466)	94 - 96	I (L05)	2	25522466
	1.073	PLUG,HTR HOSE NIP HOLE(*	94 - 95	I (L05)	1	00444746

		1,2,3,5,12,15,17,19,20,21,23,24,25,26,28,29,30,31,32,34,35,36)(SQ HD FILL & DRN 1/2-14X0.610.) (PLAIN)(8.971)			
	1.073	PLUG ,HTR HOSE NIP HOLE(*17,19,20,21,23,24,35,39,40)(SQ HD FILL & DRN 1/2-14X0.610.) (PLAIN)(8.971)	96 - 97	I (L05)	1 00444746
	1.073	PLUG ,HTR HOSE NIP HOLE(*17,21,22,24,31,35,36)(AUTO DRAIN,INT SQ,3/8-18X.42 PEOR STL)(8.971)	94 - 95	I (L05)	1 14090911
	1.073	PLUG ,HTR HOSE NIP HOLE(*17,21,22,24,39)(AUTO DRAIN,INT SQ,3/8-18X.42 PEOR STL)(8.971)	96 - 97	I (L05)	1 14090911
	1.073	PLUG ,HTR HOSE NIP HOLE(*19,20,23,24,35,39,40)(1/2-14X 39/64,STL,PE)(HEADLESS SQ SOC,USE W/SEALER #1052080)(8.971)(AC-DELCO #25522466)	97	I (L05)	2 25522466
	1.073	PLUG ,HTR HOSE NIP HOLE(*34,41,42,43)(1/2-14X 39/64,STL,PE)(HEADLESS SQ SOC,USE W/SEALER #1052080)(8.971)(AC-DELCO #25522466)	00	I (L31)	1 25522466
	1.073	PLUG ,HTR HOSE NIP HOLE(*34,41,42,43,44)(SQ HD FILL & DRN 1/2-14X0.610.) (PLAIN)(8.971)	00 - 01	I (L31)	1 00444746
	1.073	PLUG ,HTR HOSE NIP HOLE(*41,42,43,44)(1/2-14X 39/64,STL,PE)(HEADLESS SQ SOC,USE W/SEALER #1052080)(8.971)(AC-DELCO #25522466)	01	I (L31)	1 25522466
	1.073	PLUG ,HTR HOSE NIP HOLE(*41,42,43,44,46,48,49)(1/2-14X 39/64,STL,PE)(HEADLESS SQ SOC,USE W/SEALER #1052080)(8.971)(AC-DELCO #25522466)	02 - 04	I (LG9)	1 25522466
	1.073	PLUG ,HTR HOSE NIP HOLE(*41,43,44,46,48,49)(SQ HD FILL & DRN 1/2-14X0.610.) (PLAIN)(8.971)	02 - 04	I (LG9)	1 00444746
75.	0.413	STUD ,VLV RKR ARM CVR	00 - 04		
	0.413	STUD ,VLV RKR ARM CVR(*15,27,31,33)	94 - 95	I (L05)	AR 10108674
	0.413	STUD ,VLV RKR ARM CVR(*27,35,37)	96 - 97	I (L05)	AR 10108674
	0.413	STUD ,VLV RKR ARM CVR(*7,17,21)	93	I (L05)	AR 10108674
	0.413	STUD ,VLV RKR ARM CVR(*9)	91 - 92	I (L05)	8 14082320
76.	2.410	CONTROL ,DISTR VAC(PART OF 17)	00 - 04		
	2.410	CONTROL ,DISTR VAC(*9,14,22)(PART OF 17)(AC-DELCO #D1326B)	91 - 97	I (L05)	1 01973691
77.	0.439	GUIDE ,VLV LFTR PUSH ROD	00 - 04		
	0.439	GUIDE ,VLV LFTR PUSH ROD(W/ALUM HEADS ONLY)(*17,21,31,35)	91 - 94	I (L05)	8 10111771
	0.439	GUIDE ,VLV LFTR(*14)	95	I (L05)	8 12550002
	0.439	GUIDE ,VLV LFTR(*15,16,17,18,19,20,21,23)	91 - 93	I (L05)	8 12550002
	0.439	GUIDE ,VLV LFTR(*17,19,20,21,23,24,27,34,35,37,38,40,41.)	96 - 97	I (L05,L31)	8 12550002
	0.439	GUIDE ,VLV LFTR(*17,19,20,21,23,27,31,32,33,34,35,36)	94 - 95	I (L05)	8 12550002
	0.439	GUIDE ,VLV LFTR(*34,41,42,43)	98 - 01	I (L31,L05)	8 12550002

	0.439	GUIDE ,VLV LFTR(*41,43,44,46,48,49)	02 - 04	I (LG9)	8	12550002
78.	3.671	COVER ,EGR VLV OPG	00 - 04			
	3.671	COVER ,EGR VLV OPG(*17,21,22,24,31,35,36)	91 - 95	I (L05) (OEM-MARINE ENGINES ONLY)	1	06269414
	3.671	COVER ,EGR VLV OPG(*22,24,39)	96 - 97	I (L05) (OEM-MARINE ENGINES ONLY)	1	06269414
	3.671	COVER ,EGR VLV OPG(*27,33)	94 - 95	I (L05) (EXC EGR VLV	1	10054880
79.	3.671	GASKET ,EGR VLV OPG CVR	00 - 04			
	3.671	GASKET ,EGR VLV OPG CVR(*17,21,22,24,31,35,36) (AC-DELCO #219-20)	91 - 95	I (L05)	AR	12554530
	3.671	GASKET ,EGR VLV OPG CVR(*17,21,22,24,39)(AC- DELCO #219-20)	96 - 97	I (L05,L31)	1	12554530
	3.671	GASKET ,EGR VLV OPG CVR(*27,33)(3.680)(AC-DELCO #219-21)	94	I (L05)	1	12337972
80.	0.293	PLUG ,ENG COOL TEMP IND SW HOLE	00 - 04			
	0.293	PLUG ,ENG COOL TEMP IND SW HOLE(* 1,2,3,4,5,6,7,8,10,11,12,13,15,16,17,18,19,20,22,23,24, 25,26)(8.971)(AC-DELCO #444662)	91 - 93	I (L05)	AR	00444662
	0.293	PLUG ,ENG COOL TEMP IND SW HOLE(* 1,2,3,5,12,15,19,20,22,23,24,25,26,28,29,30,32,34) (8.971)(AC-DELCO #444662)	94 - 95	I (L05)	AR	00444662
	0.293	PLUG ,ENG COOL TEMP IND SW HOLE(*22,24,39,41) (8.971)(AC-DELCO #444662)	96 - 97	I (L05)	AR	00444662
81.	3.750	GASKET ,CARB CHOKE CVR	00 - 04			
	3.750	GASKET ,CARB CHOKE CVR(*17,21,22,24,31,35,36) (3.603)	92 - 95	I (L05)	1	14096848
	3.750	GASKET ,CARB CHOKE CVR(*17,21,22,24,39.)(3.603)	96 - 97	I (L05)	1	14096848
82.	3.750	COVER ,CARB CHOKE	00 - 04			
	3.750	COVER ,CARB CHOKE(*17,21,22,24,31,35,36)	92 - 95	I (L05)	1	14094792
	3.750	COVER ,CARB CHOKE(*17,21,22,24,36,39)	96 - 97	I (L05)	1	14094792
83.	8.900	BOLT ,HEX 3/8-16X1.12 280M PEOR FULL THD(ENG SHPG LAT)(*17,21,22,24,31)(2.042)	91 - 93	I (L05)	2	09442339
	8.900	BOLT ,HEX 3/8-16X1.12 280M PEOR FULL THD(ENG SHPG LAT)(2.042)	94 - 97	I (L05)	2	09442339
84.	2.361	DISTRIBUTOR ,(INCL 1-21,76)(SERVICE ONLY BY COMPONENTS)(*9,14,22)(AC-DELCO #93440806)	91 - 93	I (L05)	1	93440806
	NS	DISTRIBUTOR ,(INCL 1-21,76)(SERVICE BY COMPONENTS ONLY)(*28,29,30,31)	94 - 95	I (L05)	1	CPS
	2.361	DISTRIBUTOR ,(INCL 1-21,76)(SERVICE ONLY BY COMPONENTS)(*14,22)(AC-DELCO #93440806)	94 - 97	I (L05)	1	93440806
85.	8.971	PLUG; W/12346004 DRY SEALER , 1/4-18 NPTF(INT MANIF VAC HOLE)(0.034)(AC-DELCO #14084945)	91 - 97	I (L05)	AR	14084945
86.	8.971	PLUG ,3/4-14, TYPE A, STL MATERIAL(EGR VLV INT	91 - 93	I (L05)	1	09409961

		MANIF HOLE)(*1,2,3,10,11,12,14,25,26)(AC-DELCO #9409961)			
	3.265	PLUG ,EGR VLV INT MANIF HOLE(EGR VLV INT MANIF HOLE)(*1,2,3,14,15,25,26,28,29,30)(3/4-14, STEEL)(SQ SOCKET DRAIN)(8.971)(AC-DELCO #9409961)	94 - 95	I (L05)	1 09409961
	3.265	PLUG ,EGR VLV INT MANIF HOLE(EGR VLV INT MANIF HOLE)(*14)(3/4-14, STEEL)(SQ SOCKET DRAIN)(8.971)(AC-DELCO #9409961)	96 - 97	I (L05)	1 09409961
87.	3.750	PIPE ,CHOKE HT(*18)(3.603)	91	I (L05)	1 00343769
89.	3.265	MANIFOLD ,INT	00 - 04		
	3.265	MANIFOLD ,INT(*27,33.)	94 - 97	I (L05)	1 12552137
90.	NS	RAIL ,SEQ M/PORT F/INJN FUEL(SEE 3.000 GROUP FOR DETAILED ILLUSTRATED VIEW.)			
91.	3.330	BOLT ,F/INJN FUEL RL	00 - 04		
	3.330	BOLT ,F/INJN FUEL RL(M6X1X35,9.8,PEOR)(8.900)	94 - 97	I (L05)	4 11514667
	3.330	BOLT ,F/INJN FUEL RL(*34,37,38)(M6X1X30,26.5 THD)(8.900)	96	I (L31)	4 11517591
	3.330	BOLT ,F/INJN FUEL RL(*34,37,41)(M6X1X30,26.5 THD)(8.900)	97	I (L31)	4 11517591
92.	3.275	BOLT ,INT MANIF(3/8-16X1.38,280M)(HFH, PZOR)(*27,33)(8.900)	94 - 97	I (L05)	11 09439918
93.	3.275	STUD ,INT MANIF(3/8-16X1 1/4)(W/ 6194M ADHES)(*27,33)(8.981)	94 - 97	I (L05)	1 00336793
94.	3.336	GASKET ,THROT BODY	00 - 04		
	3.336	GASKET ,THROT BODY(*1,3,5,12,15,19,20,23,24,25,26,28,30,32,34)(3.726)(AC-DELCO #40-694)	94 - 95	I (L05)	1 10129565
	3.336	GASKET ,THROT BODY(*27,33.)(AC-DELCO #40-718)	94 - 97	I (L05)	1 10105379
	3.336	GASKET ,THROT BODY(*34,41)(3.726)(AC-DELCO #40-694)	98 - 99	I (L31)	1 10129565
95.	3.335	BODY ,THROT	00 - 04		
	3.335	BODY ,THROT(3.725)	94 - 95	I (L05)	1 17095176
	3.335	BODY ,THROT(3.725)(AC-DELCO #17113105)	94 - 95	I (L05)	1 17113105
	3.335	BODY ,THROT(*1,3,5,12,15,19,20,23,24,25,26,28,30,32,34)(3.725)	94 - 95	I (L05)	1 17113403
	3.335	BODY ,THROT(*27,33.)	94 - 97	I (L05)	1 17094143
DISCONN		BODY ,THROT(*34,41)(AC-DELCO #17113306)	98	I (L31)	1 17113306
	3.335	BODY ,THROT(*34,41)(AC-DELCO #17113325)	98	I (L31)	1 17113325
	3.335	BODY ,THROT(*34,41)(AC-DELCO #17113520)	98 - 99	I (L31)	1 17113520
	3.335	BODY ,THROT(*34,41)(51MM/30PSI/PCV/100PPH(W/TBI)(3.725)	98 - 99	I (L31)	1 17113324
	3.335	BODY ,THROT(*34,41)(51MM/30PSI/PCV/100PPH	99	I (L31)	1 17113325

		(W/TBI)(AC-DELCO #17113325)			
96.	3.336	BOLT,THROT BODY	00 - 04		
	3.336	BOLT,THROT BODY(* 1,3,5,12,15,19,20,23,24,25,26,28,30,32,34)(5/16-18 X 2 1/4,280M)(HFH)(8.900)	94 - 95 I (L05)	1	09440414
	3.336	BOLT,THROT BODY(* 1,3,5,12,15,19,20,23,24,25,26,28,30,32,34)(HEX HD W/M6X1X15 INT THD)	94 - 95 I (L05)	1	10105373
	3.336	BOLT,THROT BODY(*34,37,38)(M6X1X30,26.5 THD) (8.900)	96 I (L31)	3	11517591
	3.336	BOLT,THROT BODY(*34,37,41)(M6X1X30,26.5 THD) (8.900)	97 I (L31)	3	11517591
	3.336	BOLT,THROT BODY(*37,38)(8.900)	94 - 97 I (L05)	4	11516344
97.	3.265	PLUG,INT MANIF VAC HOLE	00 - 04		
	3.265	PLUG,INT MANIF VAC HOLE(*27)(1/4-18X.44 AM STD PIPE THD,STL,CZ (USED W/SEALER)(8.971)	96 - 97 I (L05)	AR	00144011
	3.265	PLUG,INT MANIF VAC HOLE(*27,33)(1/4-18X.44 AM STD PIPE THD,STL,CZ (USED W/SEALER)(8.971)	94 - 95 I (L05)	AR	00144011
98.	3.278	FITTING,INT MANIF VAC	00 - 04		
	3.278	FITTING,INT MANIF VAC(*27,33)	94 - 97 I (L05)	3	14082470
99.	3.330	TUBE,FUEL PRESS REG VAC	00 - 04		
	3.330	TUBE,FUEL PRESS REG VAC(*27,33.)	94 - 97 I (L05)	1	10216953
100.	1.097	PIPE,ENG COOL AIR BL	00 - 04		
	1.097	PIPE,ENG COOL AIR BL(*27,33.)(INCLUDES BOLTS & SEALS)	94 - 95 I (L05)	1	12556260
101.	1.097	NUT,ENG COOL AIR BL PIPE	00 - 04		
	1.097	NUT,ENG COOL AIR BL PIPE(*27,33.)(3/8-16 PC, 286M) (HEX,FLANGE)(8.917)	94 - 97 I (L05)	1	09442958
102.	8.800	SEALER,INT MANIF(*1,2,3,4,5,6,7,8,9,10)	91 - 97 I (L05)	AR	09985969
	8.800	SEALER,INT MANIF(*11,12,13,14,15,16,17,18,19,20)	91 - 97 I (L05)	AR	09985969
	8.800	SEALER,INT MANIF(*21,22,23,24,25,26,27,28,29,30)	91 - 97 I (L05)	AR	09985969
	8.800	SEALER,INT MANIF(*21,32,33,34,35,36,37,38,39)	91 - 97 I (L05)	AR	09985969
	8.800	SEALER,INT MANIF(*40,41)	96 - 97 I (L05,L31)	AR	09985969
103.	0.293	PLUG,CYL HD CORE HOLE(*14,17,21,22,31,35,36) (AUTO DRAIN,INT SQ,3/8-18X.42 PEOR STL)(8.971)	91 - 95 I (L05)	AR	14090911
	0.293	PLUG,CYL HD CORE HOLE(*14,17,21,22)(AUTO DRAIN,INT SQ,3/8-18X.42 PEOR STL)(8.971)	96 - 97 I (L05)	AR	14090911
104.	1.153	PLUG,WAT OTLT(*22)(1/2-14X 39/64,STL,PE) (HEADLESS SQ SOC,USE W/SEALER #1052080) (8.971)(AC-DELCO #25522466)	92 - 99 I (L05)	AR	25522466
105.	1.762	CONNECTOR,PCV TUBE	00 - 04		
	1.762	CONNECTOR,PCV TUBE(*27,33)	94 - 97 I (L05)	1	12550625

106.	1.762	TUBE,PCV	00 - 04		
	1.762	TUBE,PCV(*27,33)	94 - 97 I (L05) (ALSO INCL'S #105)	1	12557604
107.	1.745	GROMMET,PCV VLV	00 - 04		
	1.745	GROMMET,PCV VLV(*15,27,30,33,35)(1.762)	94 - 95 I (L05)	RH	10240678
	1.745	GROMMET,PCV VLV(*15,27,33,35,37.)(1.762)	94 - 96 I (L05)	LH	10240678
	1.745	GROMMET,PCV VLV(*27)(1.762)	97 I (L05)	LH	10240678
108.	1.745	VALVE,PCV	00 - 01		
	1.745	VALVE,PCV(*27,33)(CV895C,1 VACUUM PORT)(AC-DELCO #CV895C)	94 - 97 I (L05)	1	25095452
	1.745	VALVE,PCV(*34,41)(AC-DELCO #CV769C)	98 - 99 I (L31)	1	06487532
	1.745	VALVE,PCV(*41,43,44,46)(STRAIGHT FITTING HIGH FLOW 5.2 CFM *01)(AC-DELCO #CV769C)	02 - 04 I (LG9)	1	06487532
	1.745	VALVE,PCV(STRAIGHT FITTING HIGH FLOW 5.2 CFM *34, 41)(AC-DELCO #CV769C)	98 - 99 I (L31)	1	06487532
109.	1.745	CONNECTOR,PCV VLV HOSE	00 - 01		
	1.745	CONNECTOR,PCV VLV HOSE(*41,43,44,46,48,49)(1.762)	02 - 04 I (LG9)	2	10124635
	1.745	CONNECTOR,PCV VLV HOSE(*41,43,44,46,48,49)(THIS CONNECTOR IS USED OPPOSITE SIDE OF PCV VALVE)(1.762)	02 - 04 I (LG9)	1	12570156
	1.745	CONNECTOR,PCV VLV HOSE(*43,44)(1.762)	02 I (LG9)	2	10124635
	1.745	CONNECTOR,PCV VLV HOSE(1/4-18 NPTF W/3/8 NIPPLE)(*27,33)	94 - 97 I (L05)	1	00336018
110.	1.762	HOSE,PCV VLV	00 - 04		
	1.762	HOSE,PCV VLV(*27)	96 - 97 I (L05)	1	12551389
	1.762	HOSE,PCV VLV(*27,33)	94 - 95 I (L05)	1	10128361
	1.762	HOSE,PCV	91 - 01		
	1.762	HOSE,PCV(*41,43,44,46)	02 - 04 I (LG9)	1	12571807
111.	0.303	SHIM,VLV SPR	00 - 04		
	0.303	SHIM,VLV SPR(*17,21,27)	96 - 97 I (L05)	8	10212809
	0.303	SHIM,VLV SPR(*17,21,31,35)(0.519)	94 - 95 I (L05)	16	10168423
	0.303	SHIM,VLV SPR(*27,33,36)	94 - 95 I (L05)	8	10212809

NOTE 01: 5.7L 350 CID MARINE ENG. 1991 14096873 (1AN), 1992 14097408 (2AN), 1993 14097342 (3AN),1994 12550200 (4AN),1995 12550481 (5AN).

NOTE 02: 5.7L 350 CID MARINE ENG. 1991 14096874 (1AR), 1992 14097410 (2AR), 1993 14097344 (3AR),1994 12550201 (4AR).1995 12550482 (5AR).

NOTE 03: 5.7L 350 CID MARINE ENG. 1991 14096876 (1AB), 1992 14097412 (2AB), 1993 14097341 (3AB),1994 12550196 (4AB),1995 12550477 (5AB).

NOTE 04: 5.7L 350 CID MARINE ENG. 1991 14096878 (1AP), 1993 10228451 (3AP).

NOTE 05: 5.7L 350 CID MARINE ENG. 1991 14096879 (1AS), 1992 14097426 (2AS), 1993 14097338 (3AS),1994 12550198 (4AS),1995 12550479 (5AS).

NOTE 06: 5.7L 350 CID MARINE ENG. 1991 14096880 (1AT); 1992 14097427 (2AT).

NOTE 07: 5.7L 350 CID MARINE ENG. 1991 14096882 (1AK); 1992 14097428 (2AK); 1993 14097346 (3AK).

NOTE 08: 5.7L 350 CID MARINE ENG. 1991 14096883 (1AX); 1992 14097429 (2AX); 1993 10228452 (3AX).

NOTE 09: 5.7L 350 CID INDUSTRIAL ENG. 1991 14096885 (1AU); 1992 14097455 (2AU).

NOTE 10: 5.7L 350 CID MARINE ENG. 1991 14097182 (1MN), 1992 14097409 (2MN), 1993 14097343 (3MN).

NOTE 11: 5.7L 350 CID MARINE ENG. 1991 14097183 (1MR); 1992 14097411 (2MR); 1993 14097345 (3MR).

NOTE 12: 5.7L 350 CID MARINE ENG. 1991 14097184 (1MB); 1992 14097413 (2MB); 1993 14097340 (3MB), 1994 12550197 (4MB), 1995 12550478 (5MB).

NOTE 13: 5.7L 350 CID MARINE ENG. 1991 14097185 (1MS); 1992 14097414 (2MS).

NOTE 14: 5.7L 350 CID IRRIGATION ENG. 1991 14097255 (1AF); 1992 14097423 (2AF); 1993 14097353 (3AF), 1994 12550209 (4AF), 1995 12550490 (5AF), 1996 12550517 (6AF), 1997 12555436 (7AF).

NOTE 15: 5.7L 350 CID MARINE ENG. 1991 14097358 (1AY); 1992 14097417 (2AY), 1994 12550199 (4AY), 1995 12550480 (5AY).

NOTE 16: 5.7L 350 CID MARINE ENG. 1991 14097359 (1AZ); 1992 14097418 (2AZ).

NOTE 17: 5.7L 350 CID MARINE ENG. 1991 14097360 (1CA); 1992 14097419 (2CA); 1993 14097351 (3CA), 1994 12550208 (4CA), 1996 12555312 (6CA), 1997 12555306 (7CA).

NOTE 18: 5.7L 350 CID MARINE ENG. 1991 14097378 (1CC).

NOTE 19: 5.7L 350 CID MARINE ENG. 1991 14097379 (1CD); 1992 14097415 (2CD); 1993 14097347 (3CD), 1994 12550204 (4CD), 1995 12550485 (5CD), 1996 12550512 (6CD), 1997 12555303 (7CD).

NOTE 20: 5.7L 350 CID MARINE ENG. 1991 14097380 (1CF); 1992 14097416 (2CF); 1993 14097349 (3CF), 1994 12550206 (4CF), 1995 12550487 (5CF), 1996 12550514 (6CF), 1997 12555305 (7CF).

NOTE 21: 5.7L 350 CID MARINE ENG. 1992 14097471 (2CB), 1993 14097350 (3CB), 1994 12550207 (4CB), 1996 12555311 (6CB), 1997 12555307 (7CB).

NOTE 22: 5.7L 350 CID INDUSTRIAL ENG. 1992 14097421 (2AH); 1993 14097352 (3AH), 1994 12550210 (4AH), 1995 12550491 (5AH), 1996 12550518 (6AH), 1997 12555437 (7AH), 1998 12558792 (8A).

NOTE 23: 5.7L 350 CID MARINE ENG. 1992 14097424 (2MD); 1993 14097348 (3MD), 1994 12550205 (4MD), 1995 12550486 (5MD), 1996 12550513 (6MD), 1997 12555304 (7MD).

NOTE 24: 5.7L 350 CID MARINE ENG. 1992 14097430 (2AJ); 1993 14097337 (3AJ), 1994 12550195 (4AJ), 1995 12550476 (5AJ), 1996 12550505 (6AJ), 1997 12555302 (7AJ).

NOTE 25: 5.7L 350 CID MARINE ENG. 1992 14097488 (2NN); 1993 14097354 (3NN), 1994 12550202 (4NN), 1995 12550483 (5NN).

NOTE 26: 5.7L 350 CID MARINE ENG. 1992 14097489 (2NR); 1993 14097355 (3NR), 1994 12550203 (4NR), 1995 12550484 (5NR).

NOTE 27: 5.7L 350 CID MARINE ENG. 1994 12550274 (4NT), 1995 12550493 (5NT), 1996 12550520 (6NT), 1997 12555435 (7NT).

NOTE 28: 5.7L 350 CID MARINE ENG. 1994 12550404 (4BN), 1995 12550494 (5BN).

NOTE 29: 5.7L 350 CID MARINE ENG. 1994 12550405 (4BR), 1995 12550495 (5BR).

NOTE 30: 5.7L 350 CID MARINE ENG. 1994 12550406 (4BY), 1995 12550496 (5BY).

NOTE 31: 5.7L 350 CID MARINE ENG. 1994 12550407 (4BA).

NOTE 32: 5.7L 350 CID MARINE ENG. 1994 12550408 (4BF), 1995 12550498 (5BF).

NOTE 33: 5.7L 350 CID MARINE ENG. 1994 12550273 (4NS), 1995 12550492 (5NS).

NOTE 34: 5.7L 350 CID MARINE ENG. 1994 12552652 (4MH), 1995 12552653 (5MH), 1996 12554997 (6MH), 1997 12555176

(7MH),1998 12558291 (8MH),1999 12558293 (9MH),2000 12560014 (OMH)

NOTE 35: 5.7L 350 CID MARINE ENG. ,1994 12551687 (4CY) ,1996 12555301
(6CY),1997 12555314 (7C

NOTE 36: 5.7L 350 CID MARINE ENG. 1995 12553266 (5CH).

NOTE 37: 5.7L 350 CID MARINE ENG. 1996 12554998 (6CJ),1997
12555177 (7CJ

NOTE 38: 5.7L 350 CID MARINE ENG. 1996 12554999 (6CK),1997
12555178 (7CK

NOTE 39: 5.7L 350 CID MARINE ENG. 1996 12555299 (6MJ),1997
12555308 (7MJ

NOTE 40: 5.7L 350 CID MARINE ENG. 1996 12555300 (6MM),1997
12555313 (7MM

NOTE 41: 5.7L 350 CID MARINE ENG. ,1997 12557780 (7MK),1998 12558292 (8MK),1999 12558294 (9MK),2000
12560015 (OMK),2001 12562105 (1MK),2002 12562110 (2MK).LINE-->46

NOTE 42: 5.7L 350 CID IRRIGATION ENG. 1998 12558791 (8AF),1999 12558793 (9AF),2000 12560017 (OAF),2001 12562106
(1AF),0000 93439922 (3AF)-->(N/U)

NOTE 43: 5.7L 350 CID INDUSTRIAL ENG.1999 12558794(9AH),2000 12560018 (OAH),2001 12562107 (1AH),2002 12562112
(2AH),0000 12572194(3PD)->(N/U),2003 93439923 (3AH),2004 93440333 (4

NOTE 44: 5.7L 350 CID MARINE ENG. 2001 12562104(1MH),2002 12562109 (2MH),0000 12572190 (3PB)->(N/U),2003
93439917 (3MH).2004 93440328 (4MH).

NOTE 46: 5.7L 350 CID MARINE ENG. 0000 12572193 (3PC)->(N/U),2003 93439918 (3MK),2004 93440329 (4MK)

NOTE 48: 5.7L 350 CID MARINE ENG. 2003 93439920 (3ML),2004 93440332 (4ML)

NOTE 49: 5.7L 350 CID MARINE ENG. 2003 93439920 (3ML),2004 93440331 (4MN)

RPO DEFINITIONS

LG9 - ENGINE,350 C.I.D.(5.7D),V8,OEM DIRECT SALES(MARINE)

L05 - ENGINE,5.7L(5.7-7)GAS 8 CYLINDER

L31 - ENGINE,GAS,8 CYL,5.7L,CPI

638 - ENGINE, 3.8L ALL